

Product datasheet for **TA321435**

Histone H2A.X (H2AFX) Rabbit Polyclonal Antibody

Product data:

Product Type:	Primary Antibodies
Applications:	IF, IHC, WB
Recommended Dilution:	WB: 1:500-1000, IHC: 1:50-100, IF: 1:100-200
Reactivity:	Human
Host:	Rabbit
Isotype:	IgG
Clonality:	Polyclonal
Immunogen:	Peptide sequence around aa.137~141 (Q-A-S-Q-E) derived from Human Histone H2A.X.
Formulation:	PBS pH7.3, 0.05% NaN ₃ , 50% glycerol
Concentration:	lot specific
Purification:	Antigen affinity purification
Conjugation:	Unconjugated
Storage:	Store at -20°C as received.
Stability:	Stable for 12 months from date of receipt.
Predicted Protein Size:	15 kDa
Gene Name:	H2A histone family member X
Database Link:	NP_002096 Entrez Gene 3014 Human P16104

Background: Variant histone H2A which replaces conventional H2A in a subset of nucleosomes. Nucleosomes wrap and compact DNA into chromatin, limiting DNA accessibility to the cellular machineries which require DNA as a template. Histones thereby play a central role in transcription regulation, DNA repair, DNA replication and chromosomal stability. DNA accessibility is regulated via a complex set of post-translational modifications of histones, also called histone code, and nucleosome remodeling. Required for checkpoint-mediated arrest of cell cycle progression in response to low doses of ionizing radiation and for efficient repair of DNA double strand breaks (DSBs) specifically when modified by C-terminal phosphorylation

Synonyms: H2A; H2A.X; H2AX; X

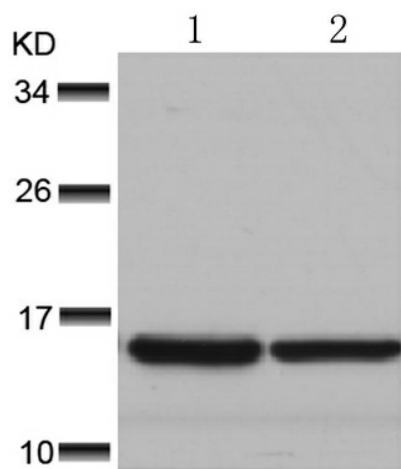


[View online »](#)

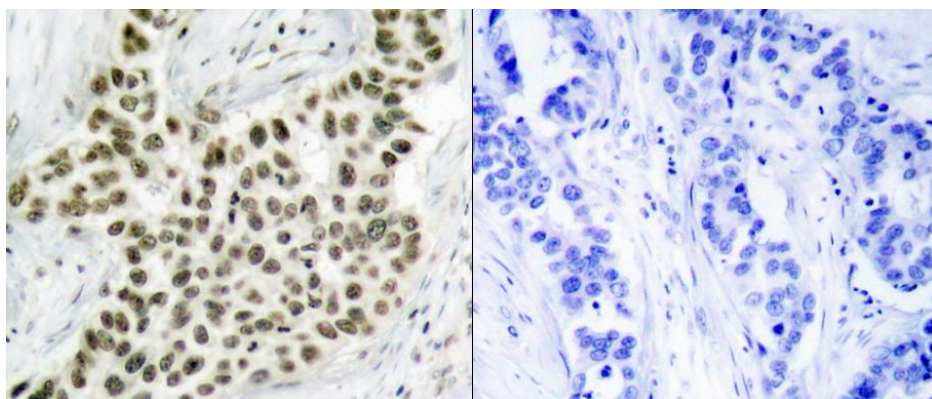
Protein Families: Druggable Genome

Protein Pathways: Systemic lupus erythematosus

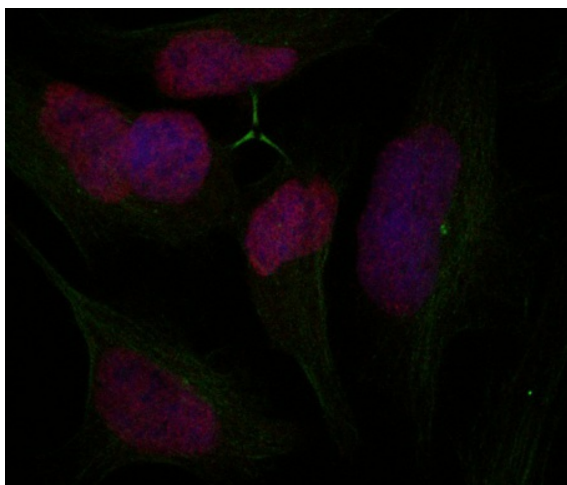
Product images:



Predicted band size: 15 kDa. Positive control: HepG2 and 293 cells lysate. Recommended dilution: 1/ 500-1000. (Gel: 12%SDS-PAGE Lane 1, 2: HepG2 and 293 cells Lysates: 30 ug per lane Primary antibody: 1/500 dilution Secondary antibody: Goat anti Rabbit IgG - H&L (HRP) at 1/10000 dilution Exposure time: 1 minute)



Predicted cell location: Nucleus. Positive control: Human breast carcinoma tissue. Recommended dilution: 1/ 50-100 The image on the left is immunohistochemistry of paraffin-embedded human breast carcinoma tissue using H2AFX (Ab-139) antibody at dilution 1/50, on the right is treated with the synthetic peptide. (Original magnification:x200)



Predicted cell location: Nucleus. Positive control: HeLa cells. Recommended dilution: 1/ 100-200. The image is immunofluorescence of methanol-fixed HeLa cells using H2AFX antibody at dilution 1/100. (Original magnification: $\times 200$)