

Product datasheet for **TA321430**

GATA1 Rabbit Polyclonal Antibody

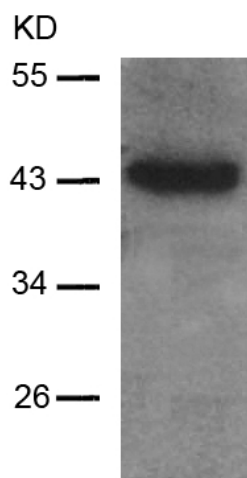
Product data:

Product Type:	Primary Antibodies
Applications:	IF, IHC, WB
Recommended Dilution:	WB: 1:500-1000, IHC: 1:50-100, IF: 1:100-200
Reactivity:	Human, Mouse, Rat
Host:	Rabbit
Isotype:	IgG
Clonality:	Polyclonal
Immunogen:	Peptide sequence around aa.140~144 (R-L-S-P-D) derived from Human GATA1.
Formulation:	PBS pH7.3, 0.05% NaN ₃ , 50% glycerol
Concentration:	lot specific
Purification:	Antigen affinity purification
Conjugation:	Unconjugated
Storage:	Store at -20°C as received.
Stability:	Stable for 12 months from date of receipt.
Predicted Protein Size:	43 kDa
Gene Name:	GATA binding protein 1
Database Link:	NP_002040 Entrez Gene 14460 MouseEntrez Gene 25172 RatEntrez Gene 2623 Human P15976
Background:	GATA1 encodes a protein which belongs to the GATA family of transcription factors. The protein plays an important role in erythroid development by regulating the switch of fetal hemoglobin to adult hemoglobin. Mutations in this gene have been associated with X-linked dyserythropoietic anemia and thrombocytopenia.
Synonyms:	ERYF1; GATA-1; GF-1; GF1; NF-E1; NFE1; XLANP; XLTDA; XLTT
Protein Families:	Adult stem cells, Druggable Genome, ES Cell Differentiation/IPS, Transcription Factors

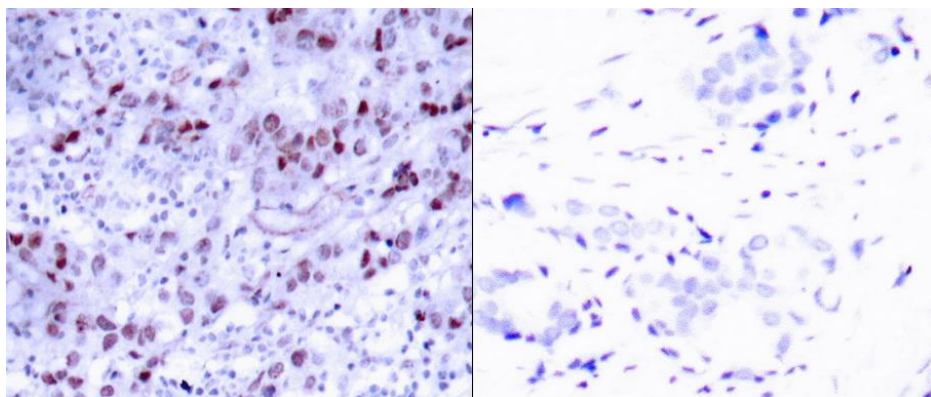


[View online »](#)

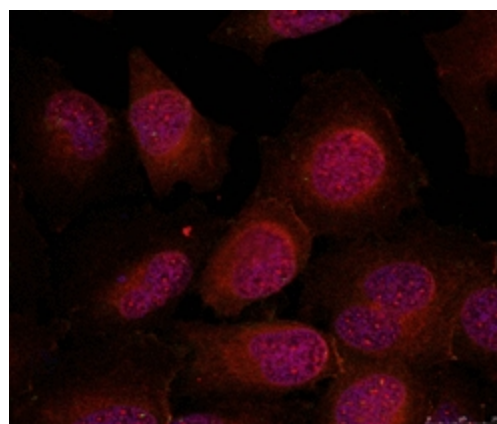
Product images:



Predicted band size: 43 kDa. Positive control: NIH/3T3 cell lysate. Recommended dilution: 1/500-1000. (Gel: 10%SDS-PAGE Lysate: 30 ug Primary antibody: 1/500 dilution Secondary antibody: Goat anti Rabbit IgG - H&L (HRP) at 1/10000 dilution Exposure time: 1 minute)



Predicted cell location: Nucleus. Positive control: Human breast carcinoma tissue. Recommended dilution: 1/50-100 The image on the left is immunohistochemistry of paraffin-embedded Human breast carcinoma tissue using GATA1 antibody at dilution 1/50, on the right is treated with the synthetic peptide. (Original magnification: x200)



Predicted cell location: Nucleus. Positive control: HeLa cells. Recommended dilution: 1/100-200. The image is immunofluorescence of methanol-fixed HeLa cells using GATA1 antibody at dilution 1/100. (Original magnification: x200)