

Product datasheet for **TA321427**

GAB1 Rabbit Polyclonal Antibody

Product data:

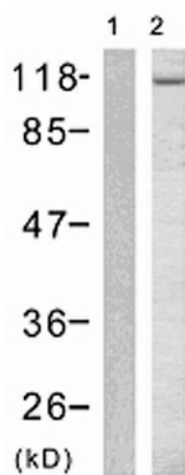
Product Type:	Primary Antibodies
Applications:	IF, WB
Recommended Dilution:	WB: 1:500-1000, IF: 1:100-200
Reactivity:	Human, Mouse
Modifications:	Phospho-specific
Host:	Rabbit
Isotype:	IgG
Clonality:	Polyclonal
Immunogen:	Peptide sequence around phosphorylation site of tyrosine 627 (V-E-Y(p)-L-D) derived from Human Gab1.
Formulation:	PBS pH7.3, 0.05% NaN ₃ , 50% glycerol
Concentration:	lot specific
Purification:	Antigen affinity purification
Conjugation:	Unconjugated
Storage:	Store at -20°C as received.
Stability:	Stable for 12 months from date of receipt.
Predicted Protein Size:	77 kDa
Gene Name:	GRB2 associated binding protein 1
Database Link:	NP_002030 Entrez Gene 14388 Mouse Entrez Gene 2549 Human Q13480
Background:	The protein encoded by Gab1 is a member of the IRS1-like multisubstrate docking protein family. It is an important mediator of branching tubulogenesis and plays a central role in cellular growth response, transformation and apoptosis. Two transcript variants encoding different isoforms have been found for this gene.
Synonyms:	GRB2-associated binding protein 1
Protein Families:	Druggable Genome



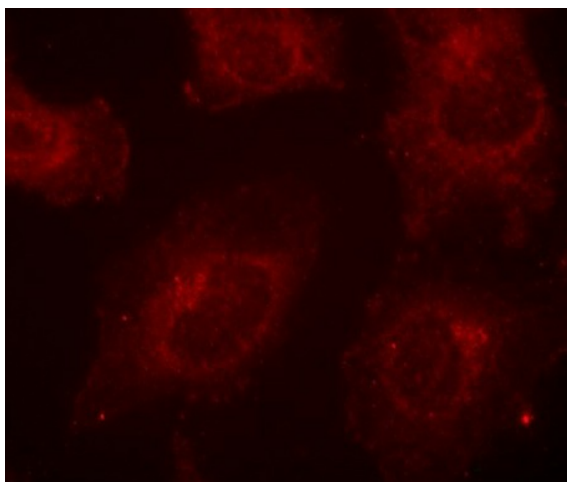
[View online »](#)

Protein Pathways: ErbB signaling pathway, Neurotrophin signaling pathway, Renal cell carcinoma

Product images:



Predicted band size: 77 kDa. Positive control: 293 cells treated with EGF lysate. Recommended dilution: 1/ 500-1000. (Gel: 8%SDS-PAGE Lane 1: 293 cells untreated with EGF lysate Lane 2: 293 cells treated with EGF lysate Lysates: 30 ug per lane Primary antibody: 1/500 dilution Secondary antibody: Goat anti Rabbit IgG - H&L (HRP) at 1/10000 dilution Exposure time: 1 minute)



Predicted cell location: Cell membrane. Positive control: HeLa cells. Recommended dilution: 1/ 100-200. The image is immunofluorescence of methanol-fixed HeLa cells using GAB1 (Phospho-Tyr627) antibody at dilution 1/100. (Original magnification: $\times 200$)