

Product datasheet for **TA321424**

FGFR4 Rabbit Polyclonal Antibody

Product data:

Product Type:	Primary Antibodies
Applications:	WB
Recommended Dilution:	WB: 1:500-1000
Reactivity:	Human, Mouse, Rat
Host:	Rabbit
Isotype:	IgG
Clonality:	Polyclonal
Immunogen:	Peptide sequence around aa.45~49(L-T-V-A-L) derived from Human FGFR4.
Formulation:	PBS pH7.3, 0.05% NaN ₃ , 50% glycerol
Concentration:	lot specific
Purification:	Antigen affinity purification
Conjugation:	Unconjugated
Storage:	Store at -20°C as received.
Stability:	Stable for 12 months from date of receipt.
Predicted Protein Size:	88 kDa
Gene Name:	fibroblast growth factor receptor 4
Database Link:	NP_002002 Entrez Gene 14186 Mouse Entrez Gene 25114 Rat Entrez Gene 2264 Human P22455



[View online »](#)

Background:

The protein encoded by this gene is a member of the fibroblast growth factor receptor family, where amino acid sequence is highly conserved between members and throughout evolution. FGFR family members differ from one another in their ligand affinities and tissue distribution. A full-length representative protein would consist of an extracellular region, composed of three immunoglobulin-like domains, a single hydrophobic membrane-spanning segment and a cytoplasmic tyrosine kinase domain. The extracellular portion of the protein interacts with fibroblast growth factors, setting in motion a cascade of downstream signals, ultimately influencing mitogenesis and differentiation. The genomic organization of this gene, compared to members 1-3, encompasses 18 exons rather than 19 or 20. Although alternative splicing has been observed, there is no evidence that the C-terminal half of the IgIII domain of this protein varies between three alternate forms, as indicated for members 1-3. This particular family member preferentially binds acidic fibroblast growth factor and, although its specific function is unknown, it is overexpressed in gynecological tumor samples, suggesting a role in breast and ovarian tumorigenesis.

Synonyms:

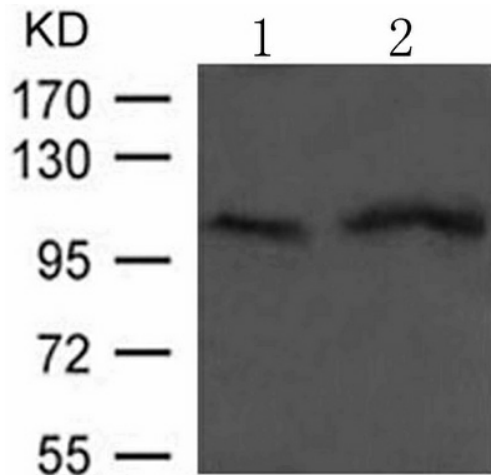
CD334; JTK2; TKF

Protein Families:

Druggable Genome, Protein Kinase

Protein Pathways:

Endocytosis, MAPK signaling pathway, Regulation of actin cytoskeleton

Product images:

Predicted band size: 88 kDa. Positive control: Rat liver and Rat brain tissue lysate. Recommended dilution: 1/ 500-1000. (Gel: 8%SDS-PAGE Lane 1, 2: Rat liver and Rat brain tissue lysate Lysates: 30 ug per lane Primary antibody: 1/500 dilution Secondary antibody: Goat anti Rabbit IgG - H&L (HRP) at 1/10000 dilution Exposure time: 1 minute)