

Product datasheet for **TA321423**

KGF (FGF7) Rabbit Polyclonal Antibody

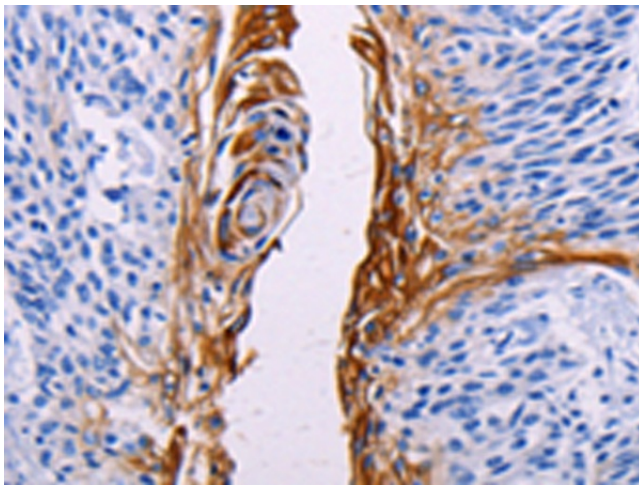
Product data:

Product Type:	Primary Antibodies
Applications:	IHC
Recommended Dilution:	IHC: 10-50 Positive control: Human esophagus cancer Predicted cell location: Cell membrane, Cytoplasm
Reactivity:	Human, Mouse, Rat
Host:	Rabbit
Isotype:	IgG
Clonality:	Polyclonal
Immunogen:	Synthetic peptide corresponding to a region derived from 179-182 amino acids of Human Fibroblast growth factor 7
Formulation:	PBS pH7.3, 0.05% NaN ₃ , 50% glycerol
Concentration:	lot specific
Purification:	Antigen affinity purification
Conjugation:	Unconjugated
Storage:	Store at -20°C as received.
Stability:	Stable for 12 months from date of receipt.
Gene Name:	fibroblast growth factor 7
Database Link:	NP_002000 Entrez Gene 14178 Mouse Entrez Gene 29348 Rat Entrez Gene 2252 Human P21781

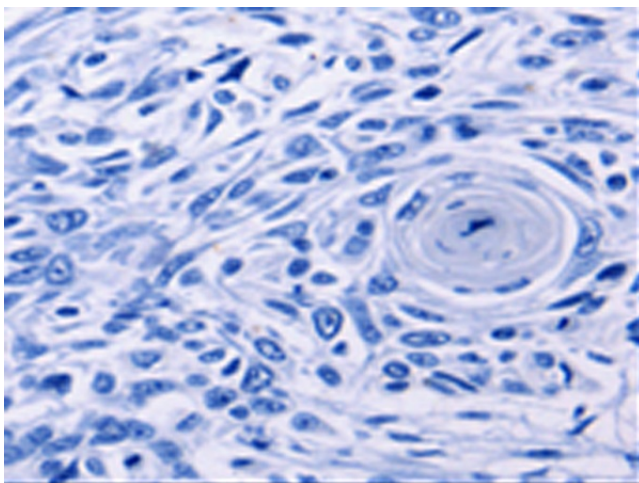


[View online »](#)

- Background:** The protein encoded by this gene is a member of the fibroblast growth factor (FGF) family. FGF family members possess broad mitogenic and cell survival activities; and are involved in a variety of biological processes; including embryonic development; cell growth; morphogenesis; tissue repair; tumor growth and invasion. This protein is a potent epithelial cell-specific growth factor; whose mitogenic activity is predominantly exhibited in keratinocytes but not in fibroblasts and endothelial cells. Studies of mouse and rat homologs of this gene implicated roles in morphogenesis of epithelium; reepithelialization of wounds; hair development and early lung organogenesis.
- Synonyms:** HBGF-7; KGF
- Protein Families:** Adult stem cells, Druggable Genome, Embryonic stem cells, ES Cell Differentiation/IPS, Secreted Protein
- Protein Pathways:** MAPK signaling pathway, Melanoma, Pathways in cancer, Regulation of actin cytoskeleton

Product images:

Immunohistochemistry of paraffin-embedded Human esophagus cancer tissue using TA321423 (FGF7 Antibody) at dilution 1/15 (Original magnification: $\times 200$)



Immunohistochemistry of paraffin-embedded Human esophagus cancer tissue using TA321423 (FGF7 Antibody) at dilution 1/15, treated with synthetic peptide. (Original magnification: $\times 200$)