

Product datasheet for **TA321419**

Fc epsilon RI (FCER1A) Rabbit Polyclonal Antibody

Product data:

Product Type:	Primary Antibodies
Applications:	WB
Recommended Dilution:	WB: 1:500-2000
Reactivity:	Human
Host:	Rabbit
Isotype:	IgG
Clonality:	Polyclonal
Immunogen:	Fusion protein corresponding to a region derived from 26-205 amino acids of human Fc fragment of IgE, high affinity I, receptor for; alpha polypeptide
Formulation:	PBS pH7.3, 0.05% NaN ₃ , 50% glycerol
Concentration:	lot specific
Purification:	Antigen affinity purification
Conjugation:	Unconjugated
Storage:	Store at -20°C as received.
Stability:	Stable for 12 months from date of receipt.
Predicted Protein Size:	30 kDa
Gene Name:	Fc fragment of IgE receptor Ia
Database Link:	NP_001992 Entrez Gene 2205 Human P12319
Background:	Fc fragment of IgE, high affinity I, receptor for, alpha polypeptide, also known as high affinity immunoglobulin epsilon receptor subunit alpha, FCER1A and FCE1A, is a single-pass type I membrane protein which contains 2 immunoglobulin-like domains. FCER1A is a subunit of the IgE receptor, which is composed of one glycosylated alpha (FCER1A), one beta (FCER1B), and two gamma (FCER1G) subunits. The high affinity IgE receptor plays a central role in allergic disease, coupling allergen and mast cell to initiate the inflammatory and immediate hypersensitivity responses that are characteristic of disorders such as hay fever and asthma.
Synonyms:	FCE1A; FcERI

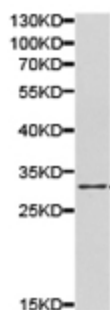


[View online »](#)

Protein Families: Transmembrane

Protein Pathways: Asthma, Fc epsilon RI signaling pathway

Product images:



Predicted band size: 30 kDa. Positive control: Mouse spleen tissue lysate. Recommended dilution: 1/500-2000. (Gel: 10%SDS-PAGE Lysate: 40 ug Primary antibody: 1/500 dilution Secondary antibody: Goat anti Rabbit IgG - H&L (HRP) at 1/10000 dilution Exposure time: 1 minute)