

Product datasheet for **TA321416S**

Thrombin Receptor (F2R) Rabbit Polyclonal Antibody

Product data:

Product Type:	Primary Antibodies
Applications:	IHC, WB
Recommended Dilution:	WB: 500-2000 WB positive control: 293T and K562 cells, human fetal kidney tissue IHC: 50-200 Positive control: Human colon cancer Predicted cell location: Cytoplasm
Reactivity:	Human
Host:	Rabbit
Isotype:	IgG
Clonality:	Polyclonal
Immunogen:	Synthetic peptide corresponding to a region derived from 56-70 amino acids of human coagulation factor II (thrombin) receptor
Formulation:	PBS pH7.3, 0.05% NaN ₃ , 50% glycerol
Purification:	Antigen affinity purification
Conjugation:	Unconjugated
Storage:	Store at -20°C as received.
Stability:	Stable for 12 months from date of receipt.
Predicted Protein Size:	47 kDa
Gene Name:	coagulation factor II thrombin receptor
Database Link:	NP_001983 Entrez Gene 2149 Human P25116
Background:	Coagulation factor II receptor is a 7-transmembrane receptor involved in the regulation of thrombotic response. Proteolytic cleavage leads to the activation of the receptor. F2R is a G-protein coupled receptor family member. High affinity receptor for activated thrombin coupled to G proteins that stimulate phosphoinositide hydrolysis. May play a role in platelets activation and in vascular development.



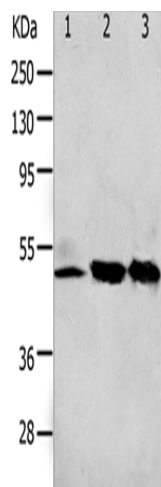
[View online »](#)

Synonyms: CF2R; HTR; PAR-1; PAR1; TR

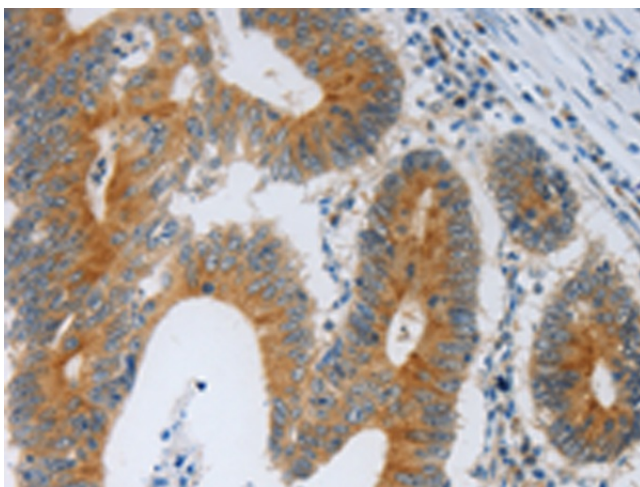
Protein Families: Druggable Genome, GPCR, Transmembrane

Protein Pathways: Calcium signaling pathway, Complement and coagulation cascades, Endocytosis, Neuroactive ligand-receptor interaction, Regulation of actin cytoskeleton

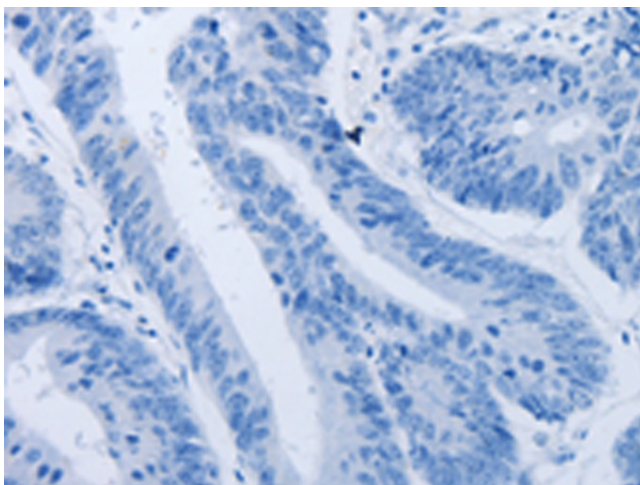
Product images:



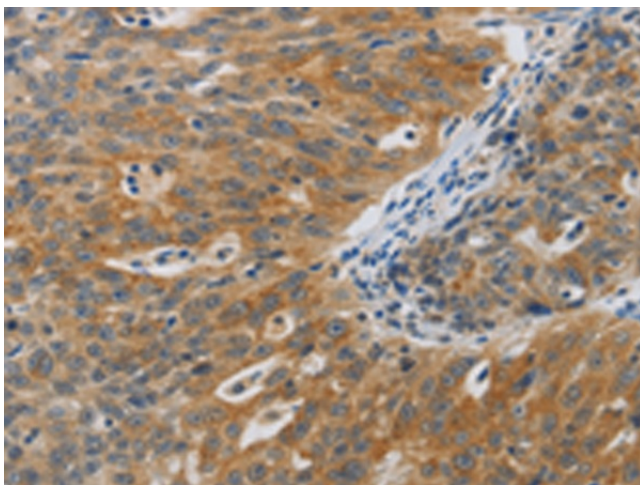
Gel: 10+12%SDS-PAGE
Lysate: 40 µg
Lane 1-3: 293T cells
K562 cells
human fetal kidney tissue
Primary antibody: [TA321416] (F2R Antibody) at dilution 1/650
Secondary antibody: Goat anti rabbit IgG at 1/8000 dilution
Exposure time: 2 minutes



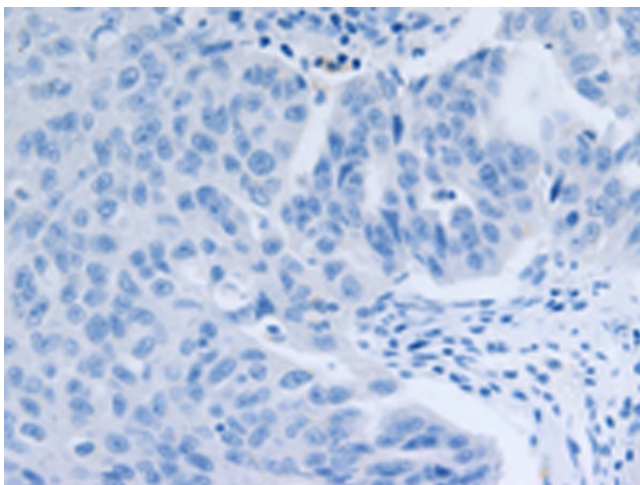
Immunohistochemistry of paraffin-embedded Human colon cancer tissue using [TA321416] (F2R Antibody) at dilution 1/40 (Original magnification: ×200)



Immunohistochemistry of paraffin-embedded Human colon cancer tissue using [TA321416] (F2R Antibody) at dilution 1/40, treated with synthetic peptide. (Original magnification: x200)



Immunohistochemistry of paraffin-embedded Human ovarian cancer tissue using [TA321416] (F2R Antibody) at dilution 1/40 (Original magnification: x200)



Immunohistochemistry of paraffin-embedded Human ovarian cancer tissue using [TA321416] (F2R Antibody) at dilution 1/40, treated with synthetic peptide. (Original magnification: x200)