

## Product datasheet for **TA321412S**

### DUT Rabbit Polyclonal Antibody

#### Product data:

Product Type:	Primary Antibodies
Applications:	IHC
Recommended Dilution:	IHC: 25-100 Positive control: Human gastric cancer Predicted cell location: Cytoplasm and Nucleus
Reactivity:	Human, Rat
Host:	Rabbit
Isotype:	IgG
Clonality:	Polyclonal
Immunogen:	Synthetic peptide corresponding to a region derived from 132-244 amino acids of Human Deoxyuridine triphosphatase
Formulation:	PBS pH7.3, 0.05% NaN <sub>3</sub> , 50% glycerol
Purification:	Antigen affinity purification
Conjugation:	Unconjugated
Storage:	Store at -20°C as received.
Stability:	Stable for 12 months from date of receipt.
Predicted Protein Size:	27 kDa
Gene Name:	deoxyuridine triphosphatase
Database Link:	<a href="#">NP_001939</a> <a href="#">Entrez Gene 497778 Rat</a> <a href="#">Entrez Gene 1854 Human</a> <a href="#">P33316</a>



[View online »](#)

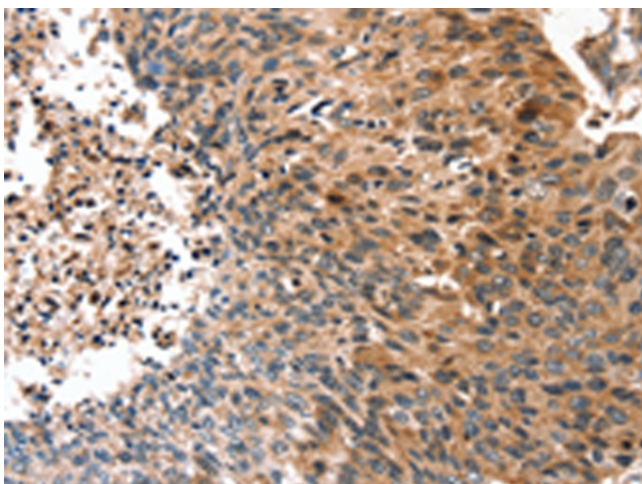
**Background:** This gene encodes an essential enzyme of nucleotide metabolism. The encoded protein forms a ubiquitous; homotetrameric enzyme that hydrolyzes dUTP to dUMP and pyrophosphate. This reaction serves two cellular purposes: providing a precursor (dUMP) for the synthesis of thymine nucleotides needed for DNA replication; and limiting intracellular pools of dUTP. Elevated levels of dUTP lead to increased incorporation of uracil into DNA; which induces extensive excision repair mediated by uracil glycosylase. This repair process; resulting in the removal and reincorporation of dUTP; is self-defeating and leads to DNA fragmentation and cell death. Alternative splicing of this gene leads to different isoforms that localize to either the mitochondrion or nucleus. A related pseudogene is located on chromosome 19.

**Synonyms:** dUTPase

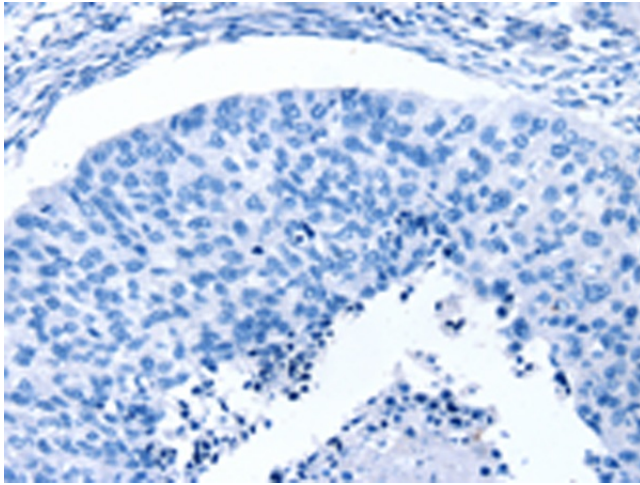
**Protein Families:** Druggable Genome

**Protein Pathways:** Metabolic pathways, Pyrimidine metabolism

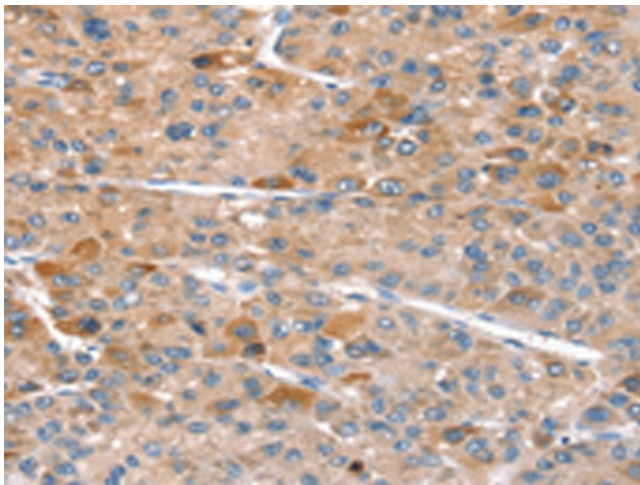
### Product images:



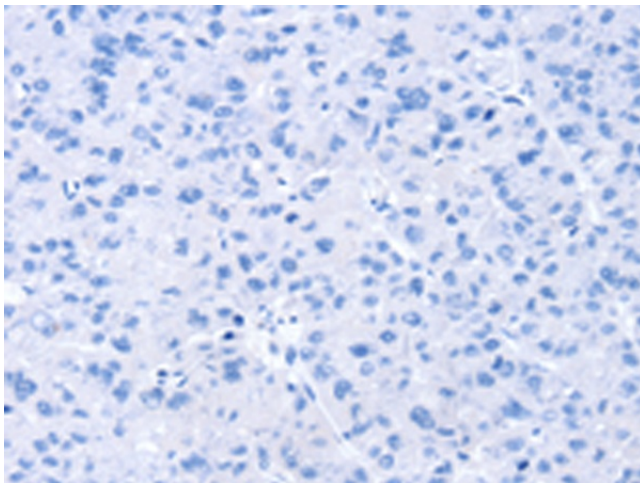
Immunohistochemistry of paraffin-embedded Human gastric cancer tissue using [TA321412] (DUT Antibody) at dilution 1/20 (Original magnification:  $\times 200$ )



Immunohistochemistry of paraffin-embedded Human gastric cancer tissue using [TA321412] (DUT Antibody) at dilution 1/20, treated with synthetic peptide. (Original magnification: ×200)



Immunohistochemistry of paraffin-embedded Human lung cancer tissue using [TA321412] (DUT Antibody) at dilution 1/20 (Original magnification: ×200)



Immunohistochemistry of paraffin-embedded Human lung cancer tissue using [TA321412] (DUT Antibody) at dilution 1/20, treated with synthetic peptide. (Original magnification: ×200)