

## Product datasheet for **TA321410**

### Cathepsin G (CTSG) Rabbit Polyclonal Antibody

#### Product data:

Product Type:	Primary Antibodies
Applications:	WB
Recommended Dilution:	WB: 1000-5000 WB positive control: Mouse liver tissue lysate
Reactivity:	Human, Mouse
Host:	Rabbit
Isotype:	IgG
Clonality:	Polyclonal
Immunogen:	Fusion protein corresponding to a region derived from 21-255 amino acids of human cathepsin G
Formulation:	PBS pH7.3, 0.05% NaN <sub>3</sub> , 50% glycerol
Concentration:	lot specific
Purification:	Antigen affinity purification
Conjugation:	Unconjugated
Storage:	Store at -20°C as received.
Stability:	Stable for 12 months from date of receipt.
Predicted Protein Size:	29 kDa
Gene Name:	cathepsin G
Database Link:	<a href="#">NP_001902</a> <a href="#">Entrez Gene 13035 Mouse</a> <a href="#">Entrez Gene 1511 Human</a> <a href="#">P08311</a>
Background:	The protein encoded by this gene; a member of the peptidase S1 protein family; is found in azurophil granules of neutrophilic polymorphonuclear leukocytes. The encoded protease has a specificity similar to that of chymotrypsin C; and may participate in the killing and digestion of engulfed pathogens; and in connective tissue remodeling at sites of inflammation. Transcript variants utilizing alternative polyadenylation signals exist for this gene.?
Synonyms:	CATG; CG

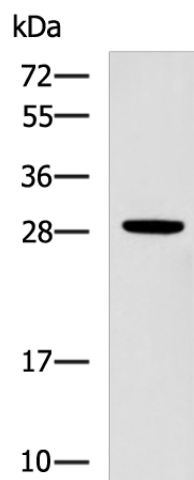


[View online »](#)

**Protein Families:** Druggable Genome, Protease

**Protein Pathways:** Lysosome, Neuroactive ligand-receptor interaction, Renin-angiotensin system, Systemic lupus erythematosus

**Product images:**



Gel: 12%SDS-PAGE  
Lysate: 40  $\mu$ g  
Lane: Mouse liver tissue lysate  
Primary antibody: TA321410 (CTSG Antibody) at dilution 1/1000  
Secondary antibody: Goat anti rabbit IgG at 1/5000 dilution  
Exposure time: 20 seconds