

Product datasheet for **TA321408**

alpha 1 Catenin (CTNNA1) Rabbit Polyclonal Antibody

Product data:

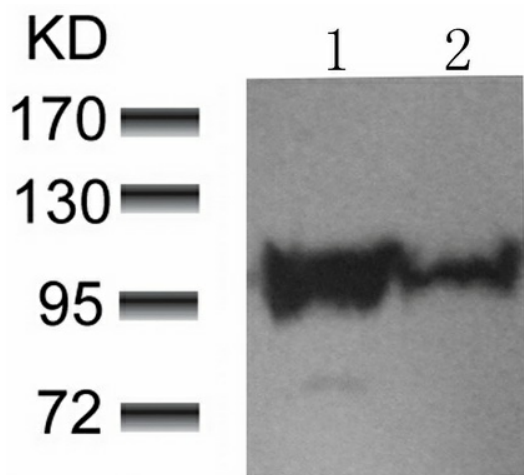
Product Type:	Primary Antibodies
Applications:	WB
Recommended Dilution:	WB: 1:500-1000
Reactivity:	Human, Mouse
Modifications:	Phospho-specific
Host:	Rabbit
Isotype:	IgG
Clonality:	Polyclonal
Immunogen:	Peptide sequence around phosphorylation site of serine 641 (D-D-S(p)-D-F) derived from Human α -catenin.
Formulation:	PBS pH7.3, 0.05% NaN ₃ , 50% glycerol
Concentration:	lot specific
Purification:	Antigen affinity purification
Conjugation:	Unconjugated
Storage:	Store at -20°C as received.
Stability:	Stable for 12 months from date of receipt.
Predicted Protein Size:	100 kDa
Gene Name:	catenin alpha 1
Database Link:	NP_001894 Entrez Gene 12385 Mouse Entrez Gene 1495 Human P35221
Background:	Associates with the cytoplasmic domain of a variety of cadherins. The association of catenins to cadherins produces a complex which is linked to the actin filament network, and which seems to be of primary importance for cadherins cell-adhesion properties. May play a crucial role in cell differentiation.
Synonyms:	CAP102; MDPT2
Protein Families:	Druggable Genome



[View online »](#)

Protein Pathways: Adherens junction, Arrhythmogenic right ventricular cardiomyopathy (ARVC), Endometrial cancer, Leukocyte transendothelial migration, Pathways in cancer, Tight junction

Product images:



Predicted band size: 100 kDa. Positive control: HeLa cells untreated or treated with starvation lysate. Recommended dilution: 1/ 500-1000. (Gel: 8%SDS-PAGE Lane 1: HeLa cells treated with starvation lysate Lane 2: HeLa cells untreated with starvation lysate Lysates: 30 ug per lane Primary antibody: 1/500 dilution Secondary antibody: Goat anti Rabbit IgG - H&L (HRP) at 1/10000 dilution Exposure time: 1 minute)