

Product datasheet for **TA321403**

Creatine kinase M type (CKM) Rabbit Polyclonal Antibody

Product data:

Product Type:	Primary Antibodies
Applications:	IHC, WB
Recommended Dilution:	WB: 1000-5000 WB positive control: Mouse muscle and Heart tissue IHC: 50-200 Positive control: Human esophagus cancer Predicted cell location: Cytoplasm
Reactivity:	Human, Mouse, Rat
Host:	Rabbit
Isotype:	IgG
Clonality:	Polyclonal
Immunogen:	Synthetic peptide corresponding to a region derived from 14-26 amino acids of Human creatine kinase, muscle
Formulation:	PBS pH7.3, 0.05% NaN ₃ , 50% glycerol
Concentration:	lot specific
Purification:	Antigen affinity purification
Conjugation:	Unconjugated
Storage:	Store at -20°C as received.
Stability:	Stable for 12 months from date of receipt.
Predicted Protein Size:	43 kDa
Gene Name:	creatine kinase, M-type
Database Link:	NP_001815 Entrez Gene 12715 Mouse Entrez Gene 24265 Rat Entrez Gene 1158 Human P06732



[View online »](#)

Background:

The protein encoded by this gene is a cytoplasmic enzyme involved in energy homeostasis and is an important serum marker for myocardial infarction. The encoded protein reversibly catalyzes the transfer of phosphate between ATP and various phosphogens such as creatine phosphate. It acts as a homodimer in striated muscle as well as in other tissues; and as a heterodimer with a similar brain isozyme in heart. The encoded protein is a member of the ATP:guanido phosphotransferase protein family

Synonyms:

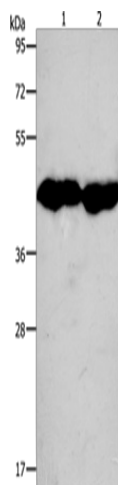
CKMM; M-CK

Protein Families:

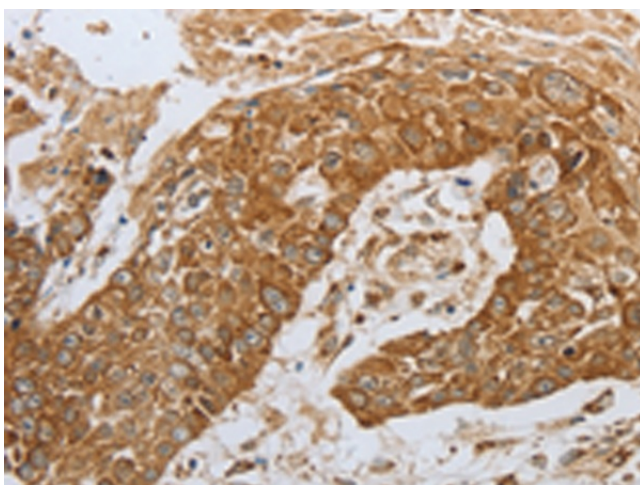
Druggable Genome

Protein Pathways:

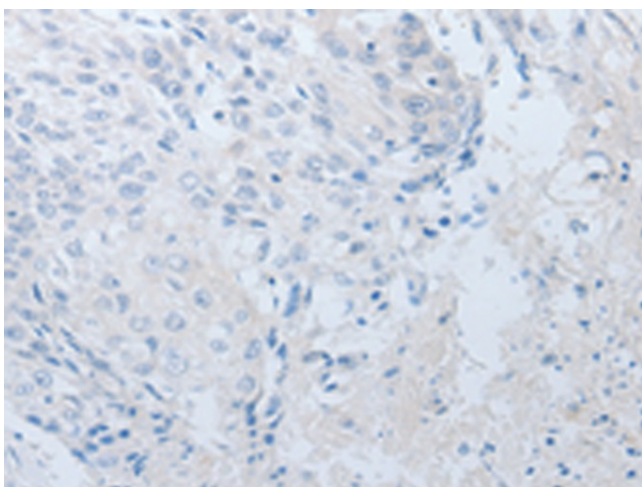
Arginine and proline metabolism, Metabolic pathways

Product images:


Gel: 10%SDS-PAGE
 Lysate: 50 µg
 Lane 1-2: Mouse muscle tissue
 Mouse Heart tissue
 Primary antibody: TA321403 (CKM Antibody) at dilution 1/950
 Secondary antibody: Goat anti rabbit IgG at 1/8000 dilution
 Exposure time: 2 seconds



Immunohistochemistry of paraffin-embedded Human esophagus cancer tissue using TA321403 (CKM Antibody) at dilution 1/50 (Original magnification: ×200)



Immunohistochemistry of paraffin-embedded Human esophagus cancer tissue using TA321403 (CKM Antibody) at dilution 1/50, treated with synthetic peptide. (Original magnification: ×200)