

Product datasheet for **TA321402**

P cadherin (CDH3) Rabbit Polyclonal Antibody

Product data:

Product Type:	Primary Antibodies
Applications:	IHC, WB
Recommended Dilution:	WB: 200-1000 WB positive control: MCF7, HUVEC, HepG2, 293T, K562 cell lysates IHC: 50-200 Positive control: Human tonsil Predicted cell location: Cell membrane
Reactivity:	Human
Host:	Rabbit
Isotype:	IgG
Clonality:	Polyclonal
Immunogen:	Fusion protein corresponding to C terminal 250 amino acids of human cadherin 3, type 1, P-cadherin (placental)
Formulation:	PBS pH7.3, 0.05% NaN ₃ , 50% glycerol
Concentration:	lot specific
Purification:	Antigen affinity purification
Conjugation:	Unconjugated
Storage:	Store at -20°C as received.
Stability:	Stable for 12 months from date of receipt.
Predicted Protein Size:	91 kDa
Gene Name:	cadherin 3
Database Link:	NP_001784 Entrez Gene 1001 Human P22223



[View online »](#)

Background:

This gene is a classical cadherin from the cadherin superfamily. The encoded protein is a calcium-dependent cell-cell adhesion glycoprotein comprised of five extracellular cadherin repeats, a transmembrane region and a highly conserved cytoplasmic tail. This gene is located in a six-cadherin cluster in a region on the long arm of chromosome 16 that is involved in loss of heterozygosity events in breast and prostate cancer. In addition, aberrant expression of this protein is observed in cervical adenocarcinomas. Mutations in this gene have been associated with congenital hypotrichosis with juvenile macular dystrophy.

Synonyms:

CDHP; HJMD; PCAD

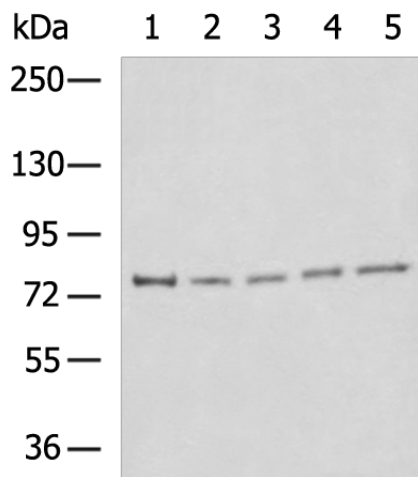
Protein Families:

Druggable Genome, Transmembrane

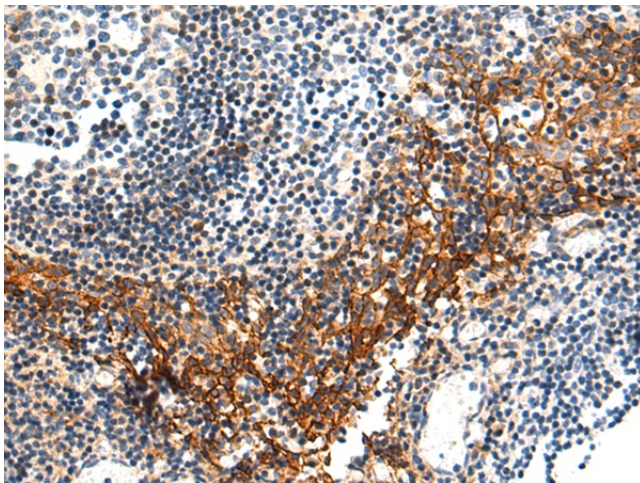
Protein Pathways:

Cell adhesion molecules (CAMs)

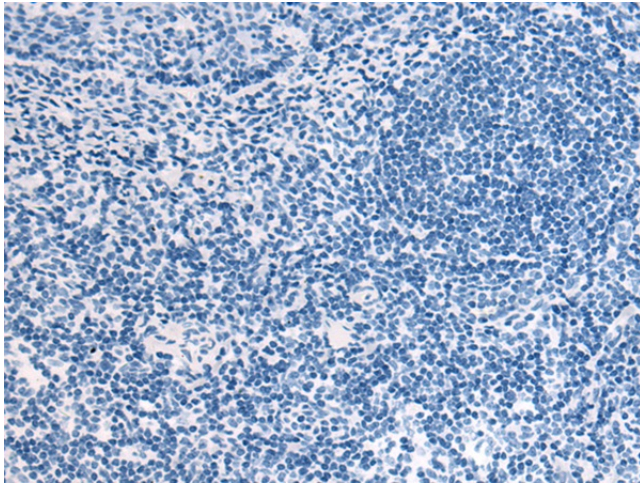
Product images:



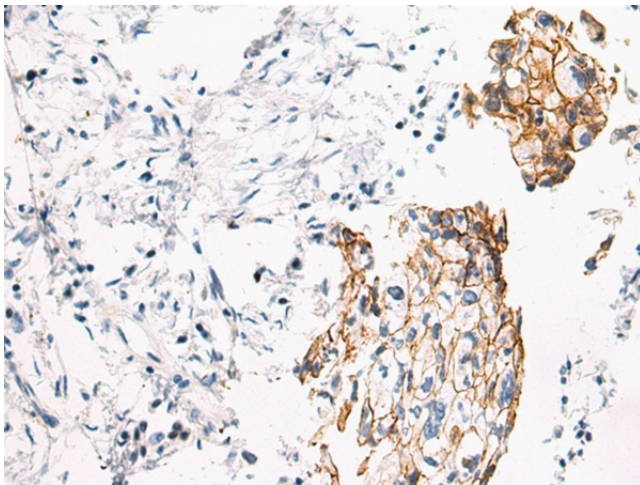
Gel: 6%SDS-PAGE
 Lysate: 40 µg
 Lane 1-5: MCF7
 HUVEC
 HepG2
 293T
 K562 cell lysates
 Primary antibody: TA321402 (CDH3 Antibody) at dilution 1/400
 Secondary antibody: Goat anti rabbit IgG at 1/5000 dilution
 Exposure time: 1 minute



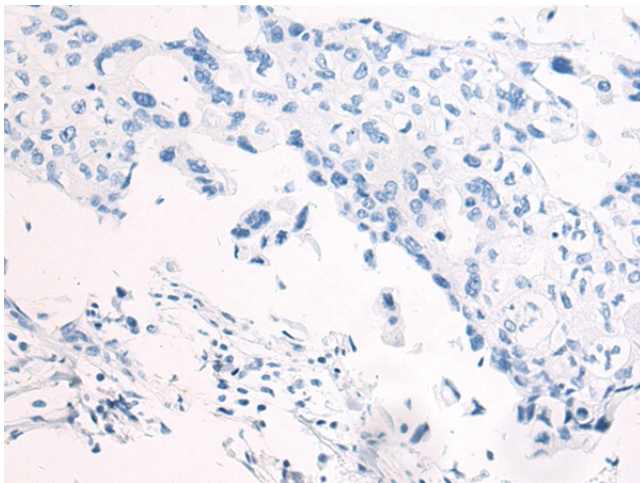
Immunohistochemistry of paraffin-embedded Human tonsil tissue using TA321402 (CDH3 Antibody) at dilution 1/80 (Original magnification: ×200)



Immunohistochemistry of paraffin-embedded Human tonsil tissue using TA321402 (CDH3 Antibody) at dilution 1/80, treated with fusion protein. (Original magnification: $\times 200$)



Immunohistochemistry of paraffin-embedded Human breast cancer tissue using TA321402 (CDH3 Antibody) at dilution 1/80 (Original magnification: $\times 200$)



Immunohistochemistry of paraffin-embedded Human breast cancer tissue using TA321402 (CDH3 Antibody) at dilution 1/80, treated with fusion protein. (Original magnification: $\times 200$)