

## Product datasheet for **TA321401**

### P cadherin (CDH3) Rabbit Polyclonal Antibody

#### Product data:

Product Type:	Primary Antibodies
Applications:	WB
Recommended Dilution:	WB: 200-1000 WB positive control: HepG2 cells
Reactivity:	Human
Host:	Rabbit
Isotype:	IgG
Clonality:	Polyclonal
Immunogen:	Fusion protein corresponding to C terminal 250 amino acids of human cadherin 3, type 1, P-cadherin (placental)
Formulation:	PBS pH7.3, 0.05% NaN <sub>3</sub> , 50% glycerol
Concentration:	lot specific
Purification:	Antigen affinity purification
Conjugation:	Unconjugated
Storage:	Store at -20°C as received.
Stability:	Stable for 12 months from date of receipt.
Predicted Protein Size:	91 kDa
Gene Name:	cadherin 3
Database Link:	<a href="#">NP_001784</a> <a href="#">Entrez Gene 1001 Human P22223</a>

**Background:** This gene is a classical cadherin from the cadherin superfamily. The encoded protein is a calcium-dependent cell-cell adhesion glycoprotein comprised of five extracellular cadherin repeats; a transmembrane region and a highly conserved cytoplasmic tail. This gene is located in a six-cadherin cluster in a region on the long arm of chromosome 16 that is involved in loss of heterozygosity events in breast and prostate cancer. In addition; aberrant expression of this protein is observed in cervical adenocarcinomas. Mutations in this gene have been associated with congenial hypotrichosis with juvenile macular dystrophy.



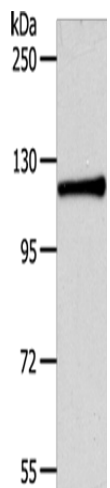
[View online »](#)

**Synonyms:** CDHP; HJMD; PCAD

**Protein Families:** Druggable Genome, Transmembrane

**Protein Pathways:** Cell adhesion molecules (CAMs)

**Product images:**



Gel: 8%SDS-PAGE  
Lysate: 40  $\mu$ g  
Lane: HepG2 cells  
Primary antibody: TA321401 (CDH3 Antibody) at dilution 1/100  
Secondary antibody: Goat anti rabbit IgG at 1/8000 dilution  
Exposure time: 1 minute