

Product datasheet for **TA321400**

CDC42 Rabbit Polyclonal Antibody

Product data:

Product Type:	Primary Antibodies
Applications:	WB
Recommended Dilution:	WB: 200-1000 WB positive control: Human fetal brain tissue
Reactivity:	Human, Mouse, Rat
Host:	Rabbit
Isotype:	IgG
Clonality:	Polyclonal
Immunogen:	Synthetic peptide corresponding to a region derived from 57-71 amino acids of Human Cell division cycle 42
Formulation:	PBS pH7.3, 0.05% NaN ₃ , 50% glycerol
Concentration:	lot specific
Purification:	Antigen affinity purification
Conjugation:	Unconjugated
Storage:	Store at -20°C as received.
Stability:	Stable for 12 months from date of receipt.
Predicted Protein Size:	23 kDa
Gene Name:	cell division cycle 42
Database Link:	NP_001782 Entrez Gene 12540 Mouse Entrez Gene 64465 Rat Entrez Gene 998 Human P60953



[View online »](#)

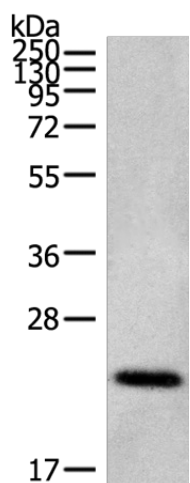
Background: The protein encoded by this gene is a small GTPase of the Rho-subfamily; which regulates signaling pathways that control diverse cellular functions including cell morphology; migration; endocytosis and cell cycle progression. This protein is highly similar to *Saccharomyces cerevisiae* Cdc 42; and is able to complement the yeast *cdc42-1* mutant. The product of oncogene *Dbl* was reported to specifically catalyze the dissociation of GDP from this protein. This protein could regulate actin polymerization through its direct binding to Neural Wiskott-Aldrich syndrome protein (N-WASP); which subsequently activates Arp2/3 complex. Alternative splicing of this gene results in multiple transcript variants.

Synonyms: CDC42Hs; G25K

Protein Families: Druggable Genome

Protein Pathways: Adherens junction, Axon guidance, Chemokine signaling pathway, Endocytosis, Epithelial cell signaling in *Helicobacter pylori* infection, Fc gamma R-mediated phagocytosis, Focal adhesion, GnRH signaling pathway, Leukocyte transendothelial migration, MAPK signaling pathway, Neurotrophin signaling pathway, Pancreatic cancer, Pathogenic *Escherichia coli* infection, Pathways in cancer, Regulation of actin cytoskeleton, Renal cell carcinoma, T cell receptor signaling pathway, Tight junction, VEGF signaling pathway

Product images:



Gel: 12%SDS-PAGE
Lysate: 40 µg
Lane: Human fetal brain tissue
Primary antibody: TA321400 (Cdc42/RhoA/Rac1 Antibody) at dilution 1/200
Secondary antibody: Goat anti rabbit IgG at 1/8000 dilution
Exposure time: 10 minutes