

## Product datasheet for **TA321394**

### RHOA Rabbit Polyclonal Antibody

#### Product data:

Product Type:	Primary Antibodies
Applications:	WB
Recommended Dilution:	WB: 500-2000 WB positive control: K562, 231 and Hela cells, Human fetal brain tissue
Reactivity:	Human, Mouse, Rat
Host:	Rabbit
Isotype:	IgG
Clonality:	Polyclonal
Immunogen:	Synthetic peptide corresponding to a region derived from 177-189 amino acids of Human ras homolog family member A
Formulation:	PBS pH7.3, 0.05% NaN <sub>3</sub> , 50% glycerol
Concentration:	lot specific
Purification:	Antigen affinity purification
Conjugation:	Unconjugated
Storage:	Store at -20°C as received.
Stability:	Stable for 12 months from date of receipt.
Predicted Protein Size:	22 kDa
Gene Name:	ras homolog family member A
Database Link:	<a href="#">NP_001655</a> <a href="#">Entrez Gene 11848 Mouse</a> <a href="#">Entrez Gene 117273 Rat</a> <a href="#">Entrez Gene 387 Human</a> <a href="#">P61586</a>



[View online »](#)

**Background:**

Regulates a signal transduction pathway linking plasma membrane receptors to the assembly of focal adhesions and actin stress fibers. Involved in a microtubule-dependent signal that is required for the myosin contractile ring formation during cell cycle cytokinesis. Plays an essential role in cleavage furrow formation. Required for the apical junction formation of keratinocyte cell-cell adhesion. Serves as a target for the yopT cysteine peptidase from *Yersinia pestis*; vector of the plague; and *Yersinia pseudotuberculosis*; which causes gastrointestinal disorders. Stimulates PKN2 kinase activity. May be an activator of PLCE1. Activated by ARHGEF2; which promotes the exchange of GDP for GTP. Essential for the SPATA13-mediated regulation of cell migration and adhesion assembly and disassembly. The MEMO1-RHOA-DIAPH1 signaling pathway plays an important role in ERBB2-dependent stabilization of microtubules at the cell cortex. It controls the localization of APC and CLASP2 to the cell membrane; via the regulation of GSK3B activity. In turn; membrane-bound APC allows the localization of the MACF1 to the cell membrane; which is required for microtubule capture and stabilization.

**Synonyms:**

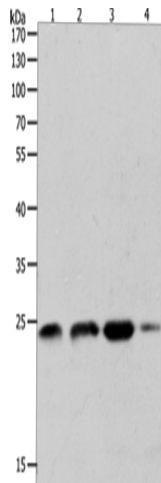
ARH12; ARHA; RHO12; RHOH12

**Protein Families:**

Druggable Genome

**Protein Pathways:**

Adherens junction, Axon guidance, Chemokine signaling pathway, Focal adhesion, Leukocyte transendothelial migration, Neurotrophin signaling pathway, Pathogenic *Escherichia coli* infection, Pathways in cancer, Regulation of actin cytoskeleton, T cell receptor signaling pathway, TGF-beta signaling pathway, Tight junction, Vascular smooth muscle contraction, Wnt signaling pathway

**Product images:**

Gel: 10%SDS-PAGE  
Lysate: 40 µg  
Lane 1-4: K562 cells  
231 cells  
HeLa cells  
Human fetal brain tissue  
Primary antibody: TA321394 (RHOA Antibody) at dilution 1/400  
Secondary antibody: Goat anti rabbit IgG at 1/8000 dilution  
Exposure time: 3 minutes