

Product datasheet for **TA321392**

RHOA Rabbit Polyclonal Antibody

Product data:

| | |
|-------------------------|--|
| Product Type: | Primary Antibodies |
| Applications: | WB |
| Recommended Dilution: | ELISA: 1:1000-2000, WB: 1:200-1000 |
| Reactivity: | Human, Mouse, Rat |
| Host: | Rabbit |
| Isotype: | IgG |
| Clonality: | Polyclonal |
| Immunogen: | Synthetic peptide corresponding to a region derived from 179-189 amino acids of Human ras homolog family member A |
| Formulation: | PBS pH7.3, 0.05% NaN ₃ , 50% glycerol |
| Concentration: | lot specific |
| Purification: | Antigen affinity purification |
| Conjugation: | Unconjugated |
| Storage: | Store at -20°C as received. |
| Stability: | Stable for 12 months from date of receipt. |
| Predicted Protein Size: | 22 kDa |
| Gene Name: | ras homolog family member A |
| Database Link: | NP_001655 Entrez Gene 11848 MouseEntrez Gene 117273 RatEntrez Gene 387 Human P61586 |



[View online »](#)

Background:

Regulates a signal transduction pathway linking plasma membrane receptors to the assembly of focal adhesions and actin stress fibers. Involved in a microtubule-dependent signal that is required for the myosin contractile ring formation during cell cycle cytokinesis. Plays an essential role in cleavage furrow formation. Required for the apical junction formation of keratinocyte cell-cell adhesion. Serves as a target for the yopT cysteine peptidase from *Yersinia pestis*; vector of the plague; and *Yersinia pseudotuberculosis*; which causes gastrointestinal disorders. Stimulates PKN2 kinase activity. May be an activator of PLCE1. Activated by ARHGEF2; which promotes the exchange of GDP for GTP. Essential for the SPATA13-mediated regulation of cell migration and adhesion assembly and disassembly. The MEMO1-RHOA-DIAPH1 signaling pathway plays an important role in ERBB2-dependent stabilization of microtubules at the cell cortex. It controls the localization of APC and CLASP2 to the cell membrane; via the regulation of GSK3B activity. In turn; membrane-bound APC allows the localization of the MACF1 to the cell membrane; which is required for microtubule capture and stabilization.

Synonyms:

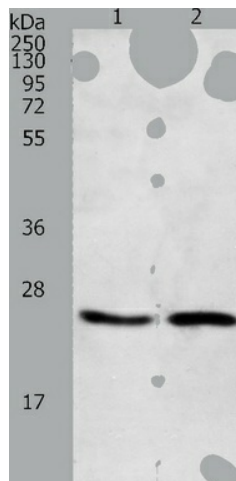
ARH12; ARHA; RHO12; RHOH12

Protein Families:

Druggable Genome

Protein Pathways:

Adherens junction, Axon guidance, Chemokine signaling pathway, Focal adhesion, Leukocyte transendothelial migration, Neurotrophin signaling pathway, Pathogenic *Escherichia coli* infection, Pathways in cancer, Regulation of actin cytoskeleton, T cell receptor signaling pathway, TGF-beta signaling pathway, Tight junction, Vascular smooth muscle contraction, Wnt signaling pathway

Product images:

Predicted band size: 22 kDa. Positive control: NIH/3T3 cell and Mouse brain tissue lysate. Recommended dilution: 1/200-1000. (Gel: 12%SDS-PAGE Lane 1: NIH/3T3 cell tissue lysate Lane 2: Mouse brain tissue lysate Lysates: 40 ug per lane Primary antibody: 1/200 dilution Secondary antibody: Goat anti Rabbit IgG - H&L (HRP) at 1/10000 dilution Exposure time: 1 minute)