

## Product datasheet for **TA321390S**

### ARF6 Rabbit Polyclonal Antibody

#### Product data:

Product Type:	Primary Antibodies
Applications:	IHC, WB
Recommended Dilution:	WB: 500-2000 WB positive control: Hela and 293T cells, mouse liver tissue, A431 and MCF-7 cells IHC: 25-100 Positive control: Human liver cancer Predicted cell location: Cytoplasm
Reactivity:	Human, Mouse, Rat
Host:	Rabbit
Isotype:	IgG
Clonality:	Polyclonal
Immunogen:	Synthetic peptide corresponding to a region derived from 162-175 amino acids of Human ADP-ribosylation factor 6
Formulation:	PBS pH7.3, 0.05% NaN <sub>3</sub> , 50% glycerol
Purification:	Antigen affinity purification
Conjugation:	Unconjugated
Storage:	Store at -20°C as received.
Stability:	Stable for 12 months from date of receipt.
Predicted Protein Size:	20 kDa
Gene Name:	ADP ribosylation factor 6
Database Link:	<a href="#">NP_001654</a> <a href="#">Entrez Gene 11845 Mouse</a> <a href="#">Entrez Gene 79121 Rat</a> <a href="#">Entrez Gene 382 Human</a> <a href="#">P62330</a>



[View online »](#)

**Background:**

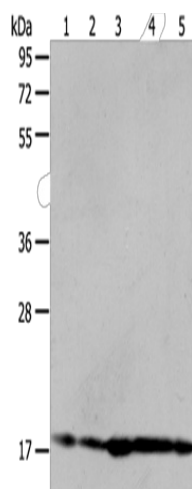
This gene encodes a member of the human ARF gene family; which is part of the RAS superfamily. The ARF genes encode small guanine nucleotide-binding proteins that stimulate the ADP-ribosyltransferase activity of cholera toxin and play a role in vesicular trafficking and as activators of phospholipase D. The product of this gene is localized to the plasma membrane; and regulates vesicular trafficking; remodelling of membrane lipids; and signaling pathways that lead to actin remodeling. A pseudogene of this gene is located on chromosome 7.

**Synonyms:**

DKFZp564M0264

**Protein Pathways:**

Endocytosis, Fc gamma R-mediated phagocytosis

**Product images:**

Gel: 8%SDS-PAGE

Lysate: 40 µg

Lane 1-5: HeLa cells

293T cells

mouse liver tissue

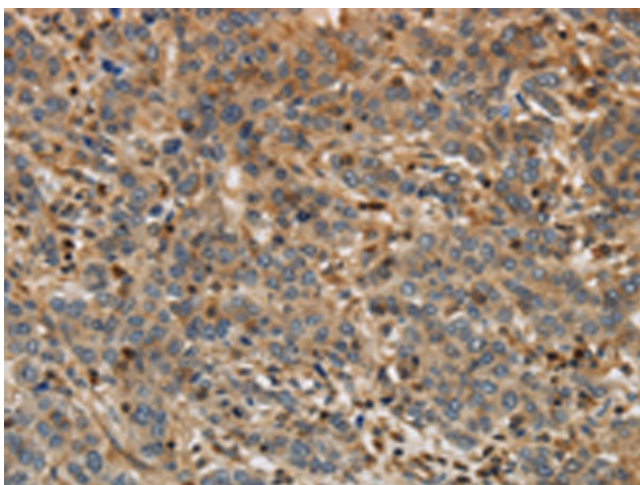
A431 cells

MCF7 cells

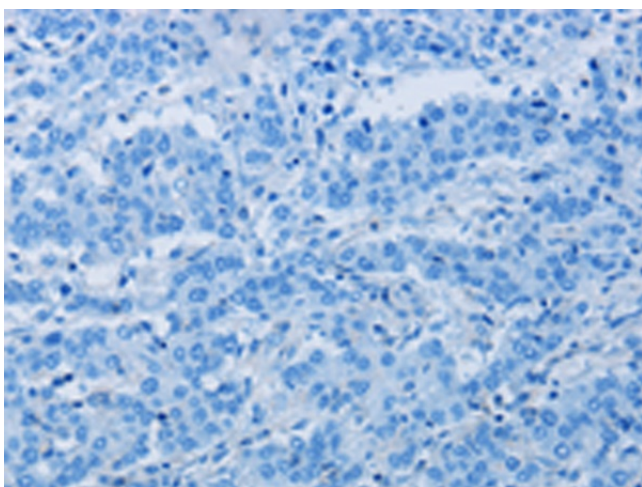
Primary antibody: [TA321390] (ARF6 Antibody) at dilution 1/450

Secondary antibody: Goat anti rabbit IgG at 1/8000 dilution

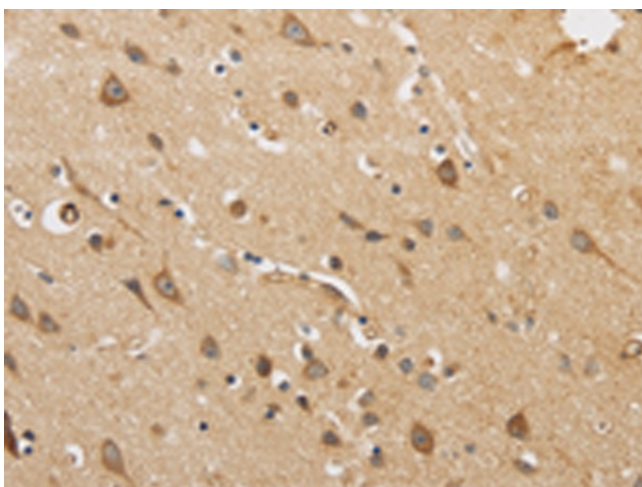
Exposure time: 40 seconds



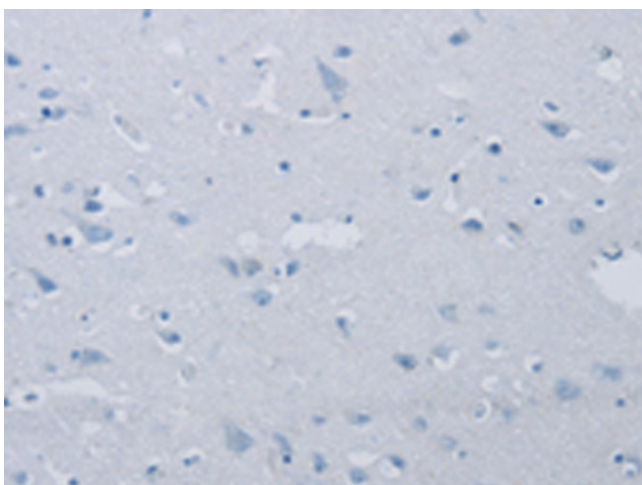
Immunohistochemistry of paraffin-embedded Human liver cancer tissue using [TA321390] (ARF6 Antibody) at dilution 1/30 (Original magnification: ×200)



Immunohistochemistry of paraffin-embedded Human liver cancer tissue using [TA321390] (ARF6 Antibody) at dilution 1/30, treated with synthetic peptide. (Original magnification: ×200)



Immunohistochemistry of paraffin-embedded Human brain tissue using [TA321390] (ARF6 Antibody) at dilution 1/30 (Original magnification: ×200)



Immunohistochemistry of paraffin-embedded Human brain tissue using [TA321390] (ARF6 Antibody) at dilution 1/30, treated with synthetic peptide. (Original magnification: ×200)