

## Product datasheet for **TA321389**

### ARF4 Rabbit Polyclonal Antibody

#### Product data:

Product Type:	Primary Antibodies
Applications:	IHC
Recommended Dilution:	IHC: 15-50 Positive control: Human breast cancer Predicted cell location: Cytoplasm
Reactivity:	Human, Mouse, Rat
Host:	Rabbit
Isotype:	IgG
Clonality:	Polyclonal
Immunogen:	Full length fusion protein
Formulation:	PBS pH7.3, 0.05% NaN <sub>3</sub> , 50% glycerol
Concentration:	lot specific
Purification:	Antigen affinity purification
Conjugation:	Unconjugated
Storage:	Store at -20°C as received.
Stability:	Stable for 12 months from date of receipt.
Gene Name:	ADP ribosylation factor 4
Database Link:	<a href="#">NP_001651</a> <a href="#">Entrez Gene 11843 Mouse</a> <a href="#">Entrez Gene 79120 Rat</a> <a href="#">Entrez Gene 378 Human</a> <a href="#">P18085</a>



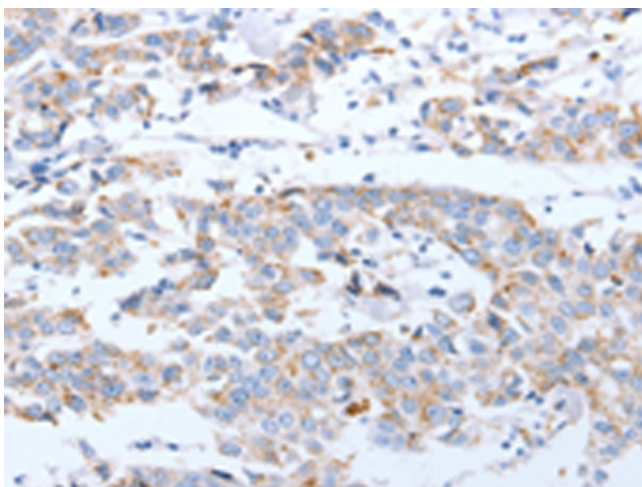
[View online »](#)

**Background:**

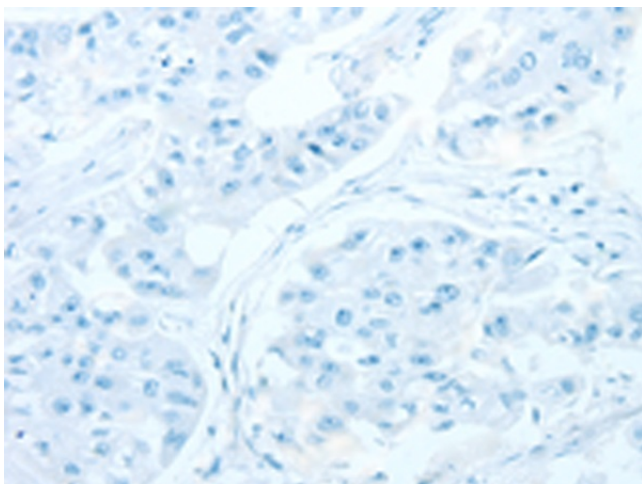
This gene is a member of the human ARF gene family whose members encode small guanine nucleotide-binding proteins that stimulate the ADP-ribosyltransferase activity of cholera toxin and play a role in vesicular trafficking and as activators of phospholipase D. The gene products include 5 ARF proteins and 11 ARF-like proteins and constitute one family of the RAS superfamily. The ARF proteins are categorized as class I; class II and class III; this gene is a class II member. The members of each class share a common gene organization. The ARF4 gene spans approximately 12kb and contains six exons and five introns. This gene is the most divergent member of the human ARFs. Conflicting map positions at 3p14 or 3p21 have been reported for this gene.

**Synonyms:**

ARF2

**Product images:**

Immunohistochemistry of paraffin-embedded Human breast cancer tissue using TA321389 (ARF4 Antibody) at dilution 1/20 (Original magnification: x200)



Immunohistochemistry of paraffin-embedded Human breast cancer tissue using TA321389 (ARF4 Antibody) at dilution 1/20, treated with fusion protein. (Original magnification: x200)