

## Product datasheet for **TA321388**

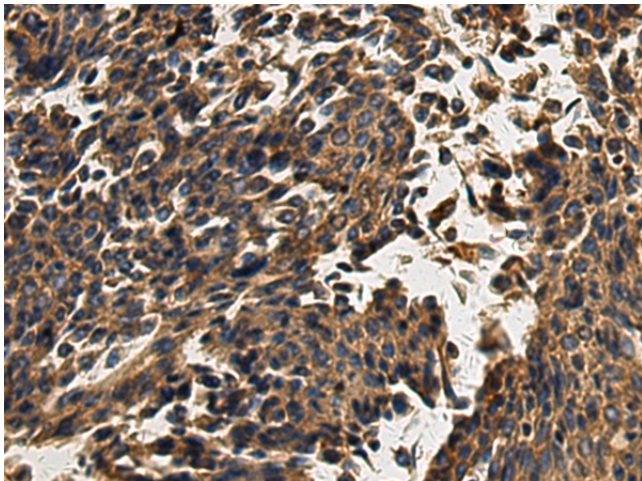
### Aquaporin 5 (AQP5) Rabbit Polyclonal Antibody

#### Product data:

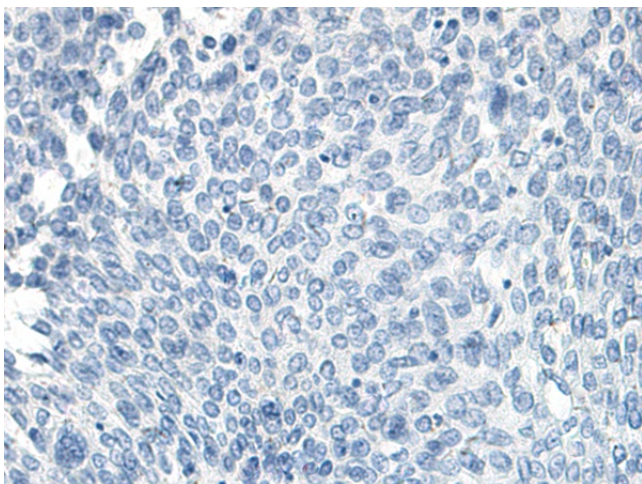
Product Type:	Primary Antibodies
Applications:	IHC
Recommended Dilution:	IHC: 50-200 Positive control: Human lung cancer Predicted cell location: Cell membrane
Reactivity:	Human
Host:	Rabbit
Isotype:	IgG
Clonality:	Polyclonal
Immunogen:	Synthetic peptide corresponding to a region derived from 250-265 amino acids of Human Aquaporin-5
Formulation:	PBS pH7.3, 0.05% NaN <sub>3</sub> , 50% glycerol
Concentration:	lot specific
Purification:	Antigen affinity purification
Conjugation:	Unconjugated
Storage:	Store at -20°C as received.
Stability:	Stable for 12 months from date of receipt.
Gene Name:	aquaporin 5
Database Link:	<a href="#">NP_001642</a> <a href="#">Entrez Gene 362 Human P55064</a>
Background:	Aquaporin-5 is a protein that in humans is encoded by the AQP5 gene. Aquaporin 5 (AQP5) is a water channel protein. Aquaporins are a family of small integral membrane proteins related to the major intrinsic protein (MIP or AQP0). Aquaporin 5 plays a role in the generation of saliva; tears and pulmonary secretions. AQP0; AQP2; AQP5; and AQP6 are closely related and all map to 12q13.
Synonyms:	AQP-5; PPKB
Protein Families:	Druggable Genome, Transmembrane



[View online »](#)

**Product images:**

Immunohistochemistry of paraffin-embedded Human lung cancer tissue using TA321388 (AQP5 Antibody) at dilution 1/35 (Original magnification:  $\times 200$ )



Immunohistochemistry of paraffin-embedded Human lung cancer tissue using TA321388 (AQP5 Antibody) at dilution 1/35, treated with synthetic peptide. (Original magnification:  $\times 200$ )