

## Product datasheet for **TA321385S**

### Amphiphysin (AMPH) Rabbit Polyclonal Antibody

#### Product data:

Product Type:	Primary Antibodies
Applications:	IHC, WB
Recommended Dilution:	WB: 500-2000 WB positive control: Mouse lung tissue IHC: 50-200 Positive control: Human ovarian cancer Predicted cell location: Cytoplasm
Reactivity:	Human, Mouse
Host:	Rabbit
Isotype:	IgG
Clonality:	Polyclonal
Immunogen:	Fusion protein corresponding to C terminal 250 amino acids of human amphiphysin
Formulation:	PBS pH7.3, 0.05% NaN <sub>3</sub> , 50% glycerol
Purification:	Antigen affinity purification
Conjugation:	Unconjugated
Storage:	Store at -20°C as received.
Stability:	Stable for 12 months from date of receipt.
Predicted Protein Size:	76 kDa
Gene Name:	amphiphysin
Database Link:	<a href="#">NP_001626</a> <a href="#">Entrez Gene 218038 Mouse</a> <a href="#">Entrez Gene 273 Human</a> <a href="#">P49418</a>

**Background:** This gene encodes a protein associated with the cytoplasmic surface of synaptic vesicles. A subset of patients with stiff-man syndrome who were also affected by breast cancer are positive for autoantibodies against this protein. Alternate splicing of this gene results in two transcript variants encoding different isoforms. Additional splice variants have been described; but their full length sequences have not been determined. A pseudogene of this gene is found on chromosome 11.



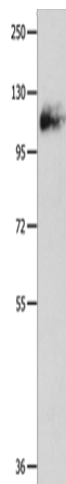
[View online »](#)

Synonyms: AMPH1

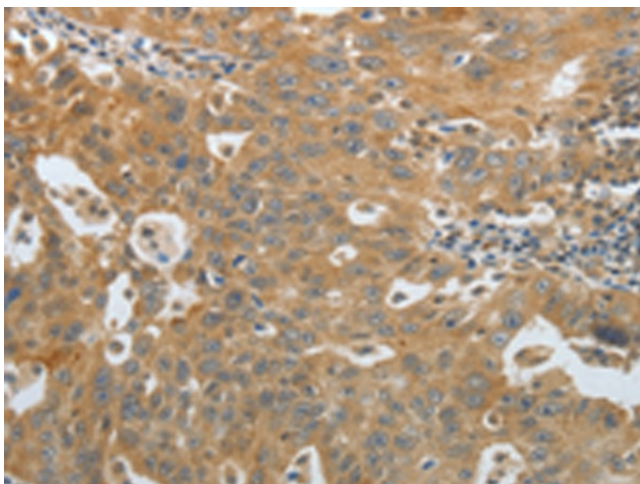
Protein Families: Secreted Protein

Protein Pathways: Fc gamma R-mediated phagocytosis

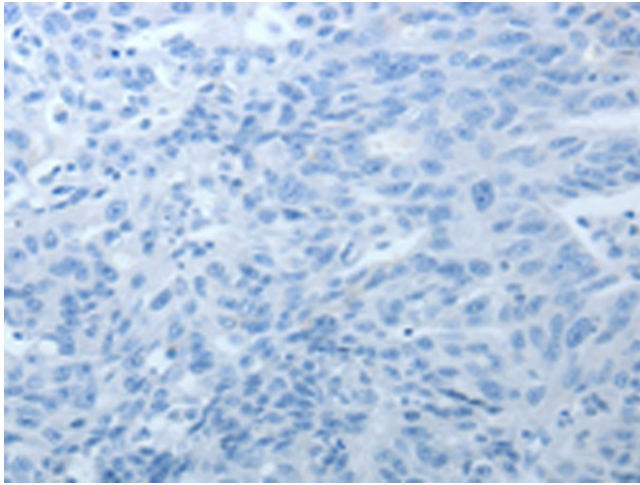
### Product images:



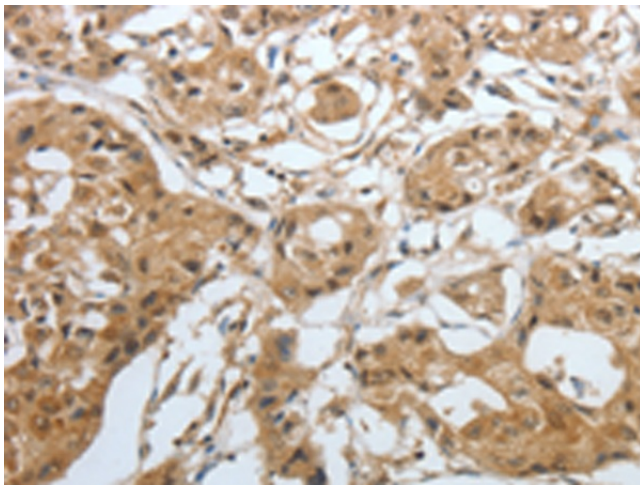
Gel: 10%SDS-PAGE  
Lysate: 60  $\mu$ g  
Lane: Mouse lung tissue  
Primary antibody: [TA321385] (AMPH Antibody) at dilution 1/500  
Secondary antibody: Goat anti rabbit IgG at 1/8000 dilution  
Exposure time: 1 minute



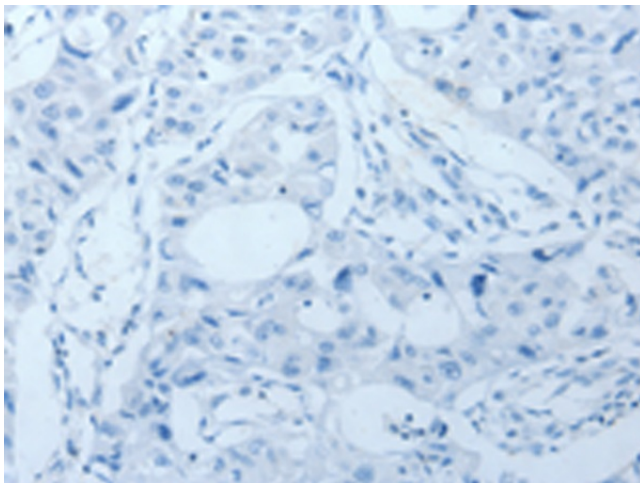
Immunohistochemistry of paraffin-embedded Human ovarian cancer tissue using [TA321385] (AMPH Antibody) at dilution 1/30 (Original magnification:  $\times$ 200)



Immunohistochemistry of paraffin-embedded Human ovarian cancer tissue using [TA321385] (AMPH Antibody) at dilution 1/30, treated with fusion protein. (Original magnification: ×200)



Immunohistochemistry of paraffin-embedded Human lung cancer tissue using [TA321385] (AMPH Antibody) at dilution 1/30 (Original magnification: ×200)



Immunohistochemistry of paraffin-embedded Human lung cancer tissue using [TA321385] (AMPH Antibody) at dilution 1/30, treated with fusion protein. (Original magnification: ×200)