

## Product datasheet for **TA321382S**

### Alpha 1 microglobulin (AMBP) Rabbit Polyclonal Antibody

#### Product data:

Product Type:	Primary Antibodies
Applications:	IHC, WB
Recommended Dilution:	WB: 500-2000 WB positive control: Human testis tissue IHC: 50-200 Positive control: Human liver cancer Predicted cell location: Cytoplasm
Reactivity:	Human
Host:	Rabbit
Isotype:	IgG
Clonality:	Polyclonal
Immunogen:	Fusion protein corresponding to a region derived from 20-284 amino acids of human alpha-1-microglobulin/bikunin precursor
Formulation:	PBS pH7.3, 0.05% NaN <sub>3</sub> , 50% glycerol
Purification:	Antigen affinity purification
Conjugation:	Unconjugated
Storage:	Store at -20°C as received.
Stability:	Stable for 12 months from date of receipt.
Gene Name:	alpha-1-microglobulin/bikunin precursor
Database Link:	<a href="#">NP_001624</a> <a href="#">Entrez Gene 259 Human P02760</a>
Background:	This gene encodes a complex glycoprotein secreted in plasma. The precursor is proteolytically processed into distinct functioning proteins: alpha-1-microglobulin, which belongs to the superfamily of lipocalin transport proteins and may play a role in the regulation of inflammatory processes, and bikunin, which is a urinary trypsin inhibitor belonging to the superfamily of Kunitz-type protease inhibitors and plays an important role in many physiological and pathological processes. This gene is located on chromosome 9 in a cluster of lipocalin genes.



[View online »](#)

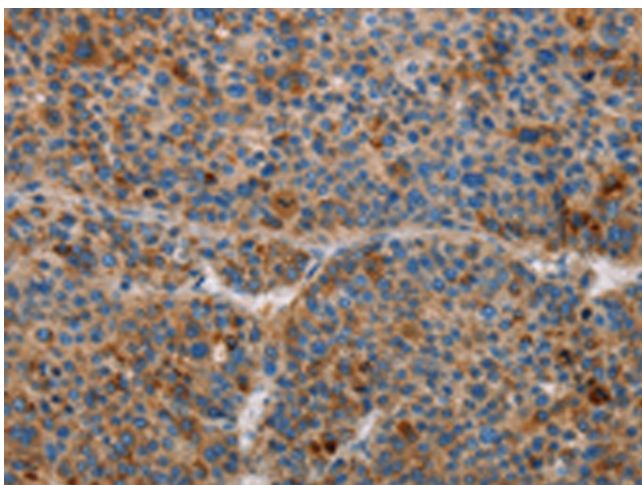
**Synonyms:** A1M; EDC1; HCP; HI30; IATIL; ITI; ITIL; ITILC; UTI

**Protein Families:** Secreted Protein

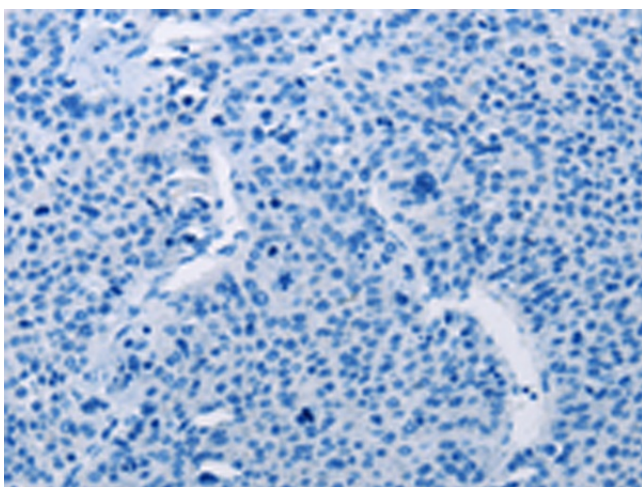
**Product images:**



Gel: 8%SDS-PAGE  
Lysate: 60  $\mu$ g  
Lane: Human testis tissue  
Primary antibody: [TA321382] (AMBP Antibody) at dilution 1/500  
Secondary antibody: Goat anti rabbit IgG at 1/8000 dilution  
Exposure time: 10 seconds



Immunohistochemistry of paraffin-embedded Human liver cancer tissue using [TA321382] (AMBP Antibody) at dilution 1/55 (Original magnification:  $\times$ 200)



Immunohistochemistry of paraffin-embedded Human liver cancer tissue using [TA321382] (AMBP Antibody) at dilution 1/55, treated with fusion protein. (Original magnification: ×200)