

## Product datasheet for **TA321377S**

### AlaRS (AARS) Rabbit Polyclonal Antibody

#### Product data:

Product Type:	Primary Antibodies
Applications:	IHC, WB
Recommended Dilution:	WB: 200-1000 WB positive control: K562 cells IHC: 25-100 Positive control: Human brain Predicted cell location: Cytoplasm
Reactivity:	Human, Rat
Host:	Rabbit
Isotype:	IgG
Clonality:	Polyclonal
Immunogen:	Synthetic peptide corresponding to N terminal 14 amino acids of human alanyl-tRNA synthetase
Formulation:	PBS pH7.3, 0.05% NaN <sub>3</sub> , 50% glycerol
Purification:	Antigen affinity purification
Conjugation:	Unconjugated
Storage:	Store at -20°C as received.
Stability:	Stable for 12 months from date of receipt.
Predicted Protein Size:	107 kDa
Gene Name:	alanyl-tRNA synthetase
Database Link:	<a href="#">NP_001596</a> <a href="#">Entrez Gene 292023 Rat</a> <a href="#">Entrez Gene 16 Human</a> <a href="#">P49588</a>



[View online »](#)

**Background:**

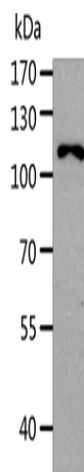
The human alanyl-tRNA synthetase (AARS) belongs to a family of tRNA synthetases, of the class II enzymes. Class II tRNA synthetases evolved early in evolution and are highly conserved. This is reflected by the fact that 498 of the 968-residue polypeptide human AARS shares 41% identity with the E.coli protein. tRNA synthetases are the enzymes that interpret the RNA code and attach specific amino acids to the tRNAs that contain the cognate trinucleotide anticodons. They consist of a catalytic domain which interacts with the amino acid acceptor-T psi C helix of the tRNA, and a second domain which interacts with the rest of the tRNA structure.

**Synonyms:**

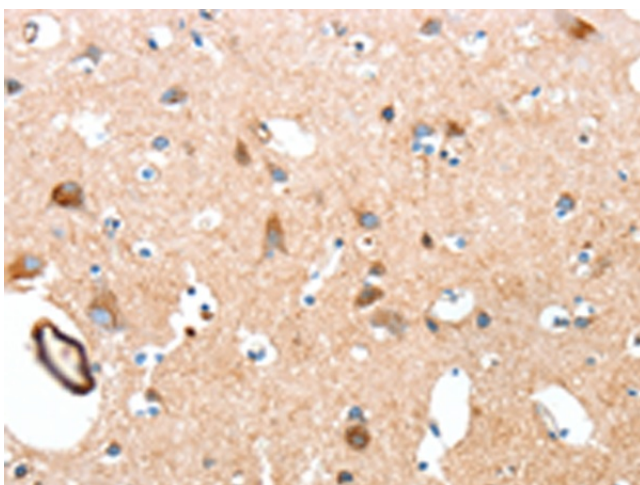
CMT2N

**Protein Pathways:**

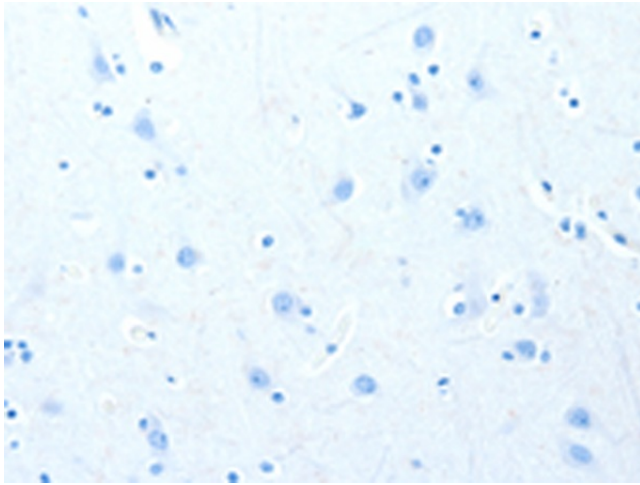
Aminoacyl-tRNA biosynthesis

**Product images:**

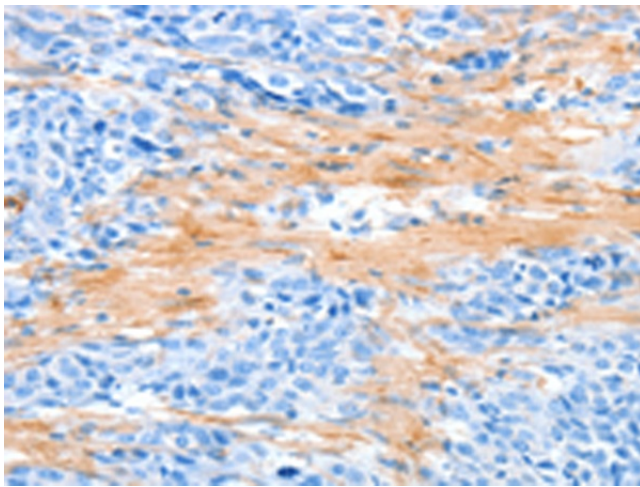
Gel: 8%SDS-PAGE  
Lysate: 40 µg  
Lane: K562 cells  
Primary antibody: [TA321377] (AARS1 Antibody) at dilution 1/283  
Secondary antibody: Goat anti rabbit IgG at 1/8000 dilution  
Exposure time: 1 minute



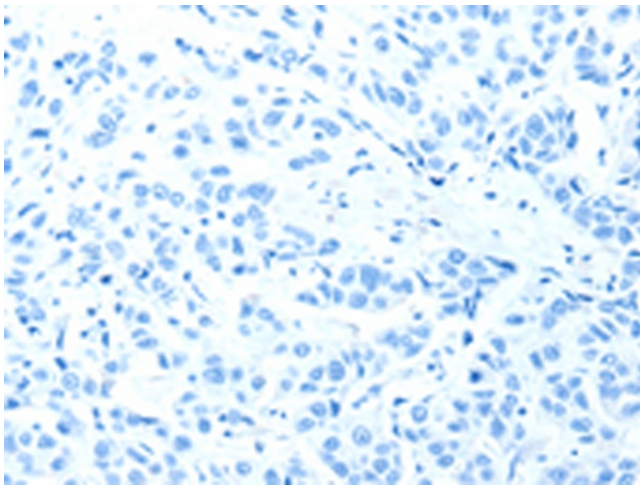
Immunohistochemistry of paraffin-embedded Human brain tissue using [TA321377] (AARS1 Antibody) at dilution 1/50 (Original magnification: ×200)



Immunohistochemistry of paraffin-embedded Human brain tissue using [TA321377] (AARS1 Antibody) at dilution 1/50, treated with synthetic peptide. (Original magnification:  $\times 200$ )



Immunohistochemistry of paraffin-embedded Human esophagus cancer tissue using [TA321377] (AARS1 Antibody) at dilution 1/50 (Original magnification:  $\times 200$ )



Immunohistochemistry of paraffin-embedded Human esophagus cancer tissue using [TA321377] (AARS1 Antibody) at dilution 1/50, treated with synthetic peptide. (Original magnification:  $\times 200$ )