

## Product datasheet for **TA321376S**

### IRF7 Rabbit Polyclonal Antibody

#### Product data:

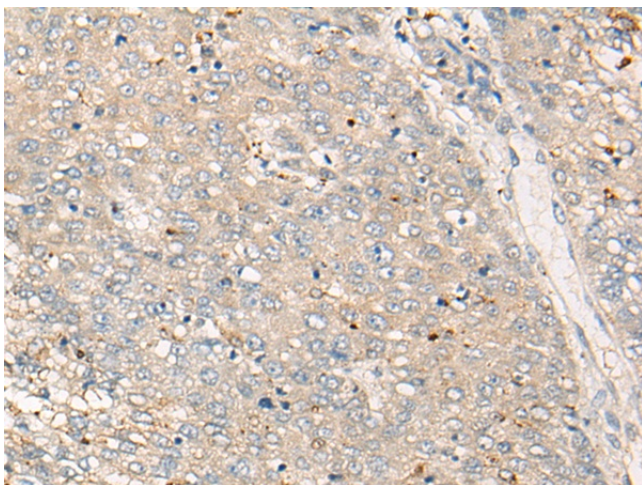
Product Type:	Primary Antibodies
Applications:	IHC
Recommended Dilution:	IHC: 25-100 Positive control: Human liver cancer Predicted cell location: Cytoplasm or Nucleus
Reactivity:	Human, Mouse
Host:	Rabbit
Isotype:	IgG
Clonality:	Polyclonal
Immunogen:	Synthetic peptide corresponding to a region derived from 462-476 amino acids of Human interferon regulatory factor 8
Formulation:	PBS pH7.3, 0.05% NaN <sub>3</sub> , 50% glycerol
Purification:	Antigen affinity purification
Conjugation:	Unconjugated
Storage:	Store at -20°C as received.
Stability:	Stable for 12 months from date of receipt.
Gene Name:	interferon regulatory factor 7
Database Link:	<a href="#">NP_001563</a> <a href="#">Entrez Gene 54123 Mouse</a> <a href="#">Entrez Gene 3665 Human</a> <a href="#">Q92985</a>
Background:	IRF7 encodes interferon regulatory factor 7; a member of the interferon regulatory transcription factor (IRF) family. IRF7 has been shown to play a role in the transcriptional activation of virus-inducible cellular genes; including interferon beta chain genes. Inducible expression of IRF7 is largely restricted to lymphoid tissue. Multiple IRF7 transcript variants have been identified; although the functional consequences of these have not yet been established.
Synonyms:	IMD39; IRF-7H; IRF7A; IRF7B; IRF7C; IRF7H
Protein Families:	Transcription Factors



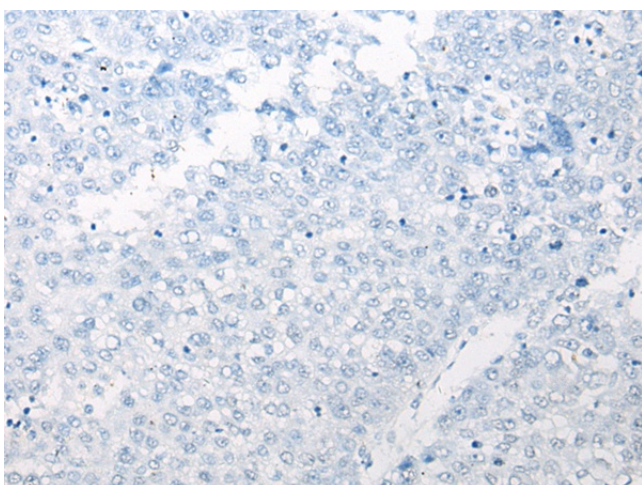
[View online »](#)

**Protein Pathways:** Cytosolic DNA-sensing pathway, RIG-I-like receptor signaling pathway, Toll-like receptor signaling pathway

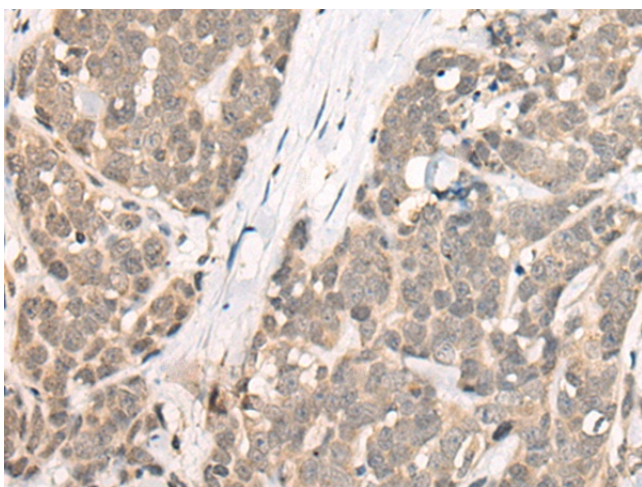
**Product images:**



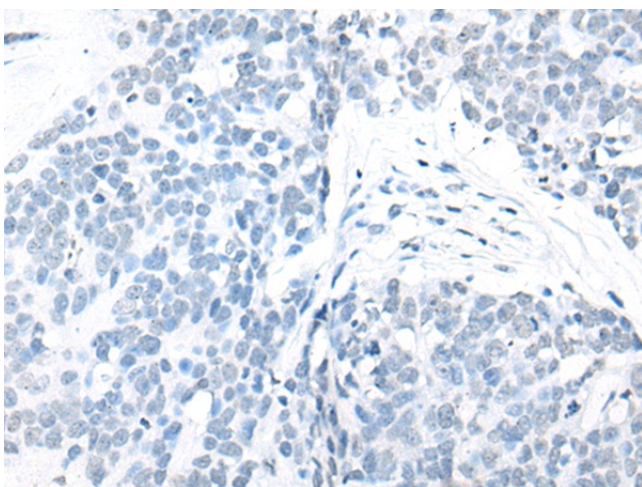
Immunohistochemistry of paraffin-embedded Human liver cancer tissue using [TA321376] (IRF7 Antibody) at dilution 1/25 (Original magnification: ×200)



Immunohistochemistry of paraffin-embedded Human liver cancer tissue using [TA321376] (IRF7 Antibody) at dilution 1/25, treated with synthetic peptide. (Original magnification: ×200)



Immunohistochemistry of paraffin-embedded Human thyroid cancer tissue using [TA321376] (IRF7 Antibody) at dilution 1/25 (Original magnification:  $\times 200$ )



Immunohistochemistry of paraffin-embedded Human thyroid cancer tissue using [TA321376] (IRF7 Antibody) at dilution 1/25, treated with synthetic peptide. (Original magnification:  $\times 200$ )