

Product datasheet for **TA321375**

IRF7 Rabbit Polyclonal Antibody

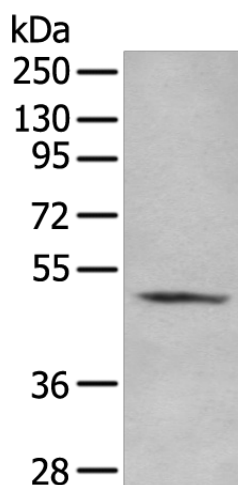
Product data:

Product Type:	Primary Antibodies
Applications:	IHC, WB
Recommended Dilution:	WB: 200-1000 WB positive control: Jurkat cell lysate IHC: 10-50 Positive control: Human lung cancer Predicted cell location: Nucleus and Cytoplasm
Reactivity:	Human, Mouse
Host:	Rabbit
Isotype:	IgG
Clonality:	Polyclonal
Immunogen:	Synthetic peptide corresponding to a region derived from 462-476 amino acids of Human interferon regulatory factor 8
Formulation:	PBS pH7.3, 0.05% NaN ₃ , 50% glycerol
Concentration:	lot specific
Purification:	Antigen affinity purification
Conjugation:	Unconjugated
Storage:	Store at -20°C as received.
Stability:	Stable for 12 months from date of receipt.
Gene Name:	interferon regulatory factor 7
Database Link:	NP_001563 Entrez Gene 54123 Mouse Entrez Gene 3665 Human Q92985

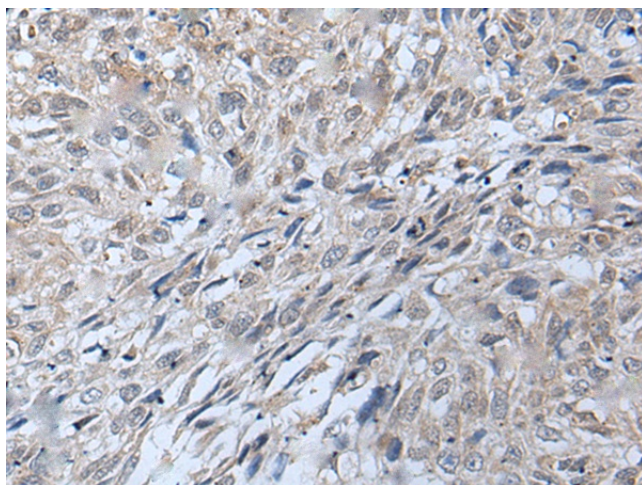


[View online »](#)

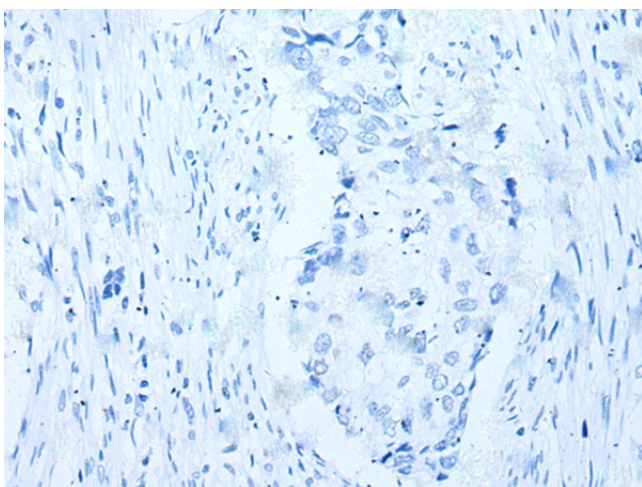
Background:	IRF7 encodes interferon regulatory factor 7; a member of the interferon regulatory transcription factor (IRF) family. IRF7 has been shown to play a role in the transcriptional activation of virus-inducible cellular genes; including interferon beta chain genes. Inducible expression of IRF7 is largely restricted to lymphoid tissue. Multiple IRF7 transcript variants have been identified; although the functional consequences of these have not yet been established.
Synonyms:	IMD39; IRF-7H; IRF7A; IRF7B; IRF7C; IRF7H
Protein Families:	Transcription Factors
Protein Pathways:	Cytosolic DNA-sensing pathway, RIG-I-like receptor signaling pathway, Toll-like receptor signaling pathway

Product images:

Gel: 8%SDS-PAGE
Lysate: 40 µg
Lane: Jurkat cell lysate
Primary antibody: TA321375 (IRF7 Antibody) at dilution 1/400
Secondary antibody: Goat anti rabbit IgG at 1/8000 dilution
Exposure time: 60 seconds



Immunohistochemistry of paraffin-embedded Human lung cancer tissue using TA321375 (IRF7 Antibody) at dilution 1/25 (Original magnification: ×200)



Immunohistochemistry of paraffin-embedded Human lung cancer tissue using TA321375 (IRF7 Antibody) at dilution 1/25, treated with synthetic peptide. (Original magnification: x200)