

## Product datasheet for **TA321373**

### IL13 receptor alpha 1 (IL13RA1) Rabbit Polyclonal Antibody

#### Product data:

Product Type:	Primary Antibodies
Applications:	IHC, WB
Recommended Dilution:	WB: 1000-5000 WB positive control: Mouse heart tissue, 293T cell lysates IHC: 100-200 Positive control: Human esophagus cancer Predicted cell location: Cell membrane
Reactivity:	Human, Mouse
Host:	Rabbit
Isotype:	IgG
Clonality:	Polyclonal
Immunogen:	Fusion protein corresponding to a region derived from 25-363 amino acids of Human Interleukin 13 receptor, alpha 1
Formulation:	PBS pH7.3, 0.05% NaN <sub>3</sub> , 50% glycerol
Concentration:	lot specific
Purification:	Antigen affinity purification
Conjugation:	Unconjugated
Storage:	Store at -20°C as received.
Stability:	Stable for 12 months from date of receipt.
Gene Name:	interleukin 13 receptor subunit alpha 1
Database Link:	<a href="#">NP_001551</a> <a href="#">Entrez Gene 16164 Mouse</a> <a href="#">Entrez Gene 3597 Human</a> <a href="#">P78552</a>



[View online »](#)

**Background:**

The protein encoded by this gene is a subunit of the interleukin 13 receptor. This subunit forms a receptor complex with IL4 receptor alpha; a subunit shared by IL13 and IL4 receptors. This subunit serves as a primary IL13-binding subunit of the IL13 receptor; and may also be a component of IL4 receptors. This protein has been shown to bind tyrosine kinase TYK2; and thus may mediate the signaling processes that lead to the activation of JAK1; STAT3 and STAT6 induced by IL13 and IL4.

**Synonyms:**

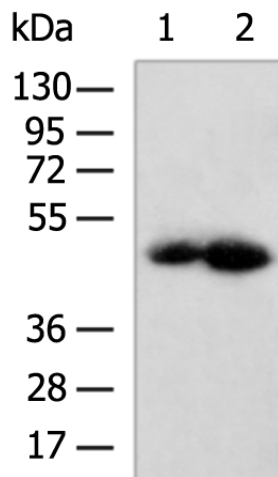
CD213A1; CT19; IL-13Ra; NR4

**Protein Families:**

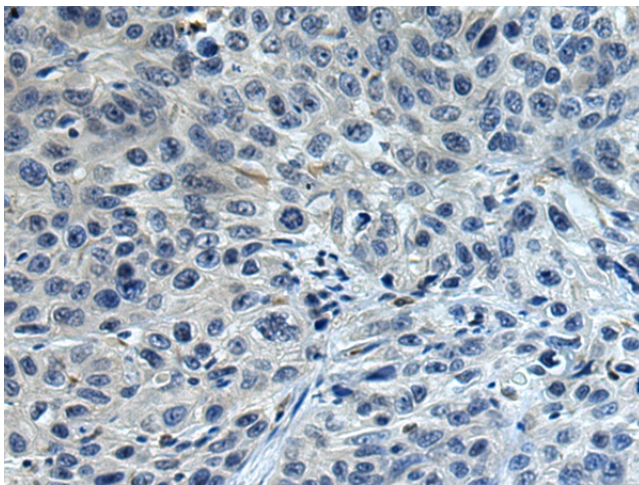
Druggable Genome, Transmembrane

**Protein Pathways:**

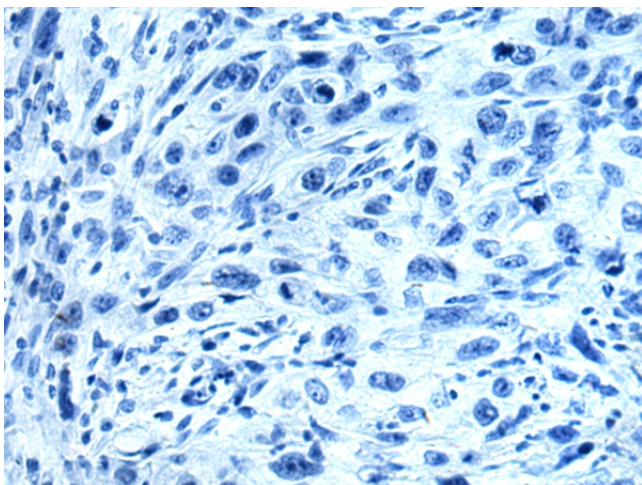
Cytokine-cytokine receptor interaction, Jak-STAT signaling pathway

**Product images:**


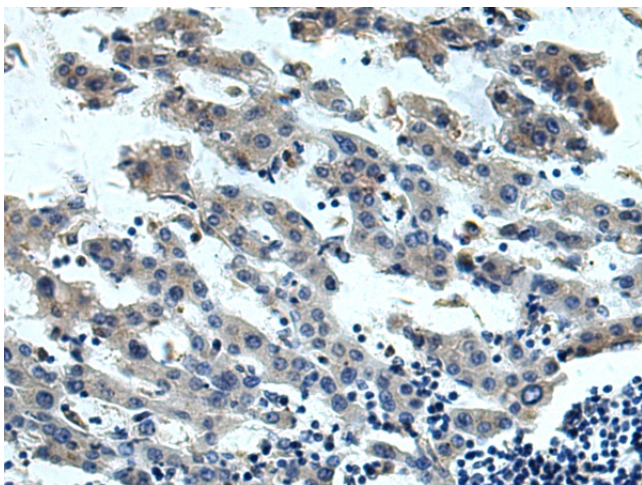
Gel: 8%SDS-PAGE  
 Lysate: 40 µg  
 Lane 1-2: Mouse heart tissue  
 293T cell lysates  
 Primary antibody: TA321373 (IL13RA1 Antibody)  
 at dilution 1/1000  
 Secondary antibody: Goat anti rabbit IgG at  
 1/5000 dilution  
 Exposure time: 10 seconds



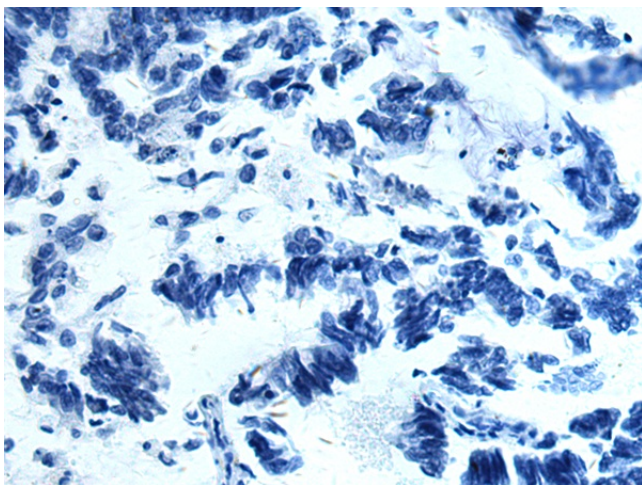
Immunohistochemistry of paraffin-embedded  
 Human esophagus cancer tissue using TA321373  
 (IL13RA1 Antibody) at dilution 1/120 (Original  
 magnification: x200)



Immunohistochemistry of paraffin-embedded Human esophagus cancer tissue using TA321373 (IL13RA1 Antibody) at dilution 1/120, treated with fusion protein. (Original magnification: ×200)



Immunohistochemistry of paraffin-embedded Human liver cancer tissue using TA321373 (IL13RA1 Antibody) at dilution 1/120 (Original magnification: ×200)



Immunohistochemistry of paraffin-embedded Human liver cancer tissue using TA321373 (IL13RA1 Antibody) at dilution 1/120, treated with fusion protein. (Original magnification: ×200)