

Product datasheet for **TA321368**

HSP27 (HSPB1) Rabbit Polyclonal Antibody

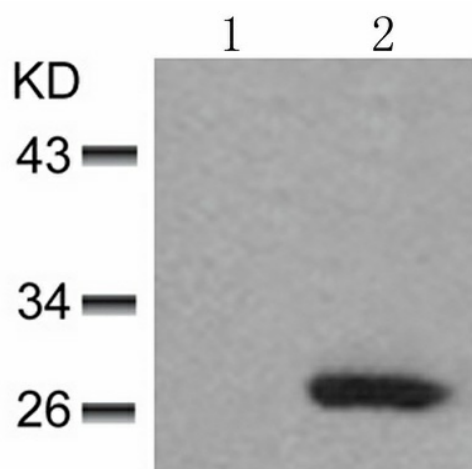
Product data:

Product Type:	Primary Antibodies
Applications:	IHC, WB
Recommended Dilution:	WB: 1:500-1000, IHC: 1:50-100
Reactivity:	Human
Modifications:	Phospho-specific
Host:	Rabbit
Isotype:	IgG
Clonality:	Polyclonal
Immunogen:	Peptide sequence around phosphorylation site of serine 82 (Q-L-S(p)-S-G) derived from Human HSP27.
Formulation:	PBS pH7.3, 0.05% NaN ₃ , 50% glycerol
Concentration:	lot specific
Purification:	Antigen affinity purification
Conjugation:	Unconjugated
Storage:	Store at -20°C as received.
Stability:	Stable for 12 months from date of receipt.
Predicted Protein Size:	23 kDa
Gene Name:	heat shock protein family B (small) member 1
Database Link:	NP_001531 Entrez Gene 3315 Human P04792
Background:	Involved in stress resistance and actin organization.
Synonyms:	CMT2F; HEL-S-102; HMN2B; HS.76067; Hsp25; HSP27; HSP28; SRP27
Protein Pathways:	MAPK signaling pathway, VEGF signaling pathway

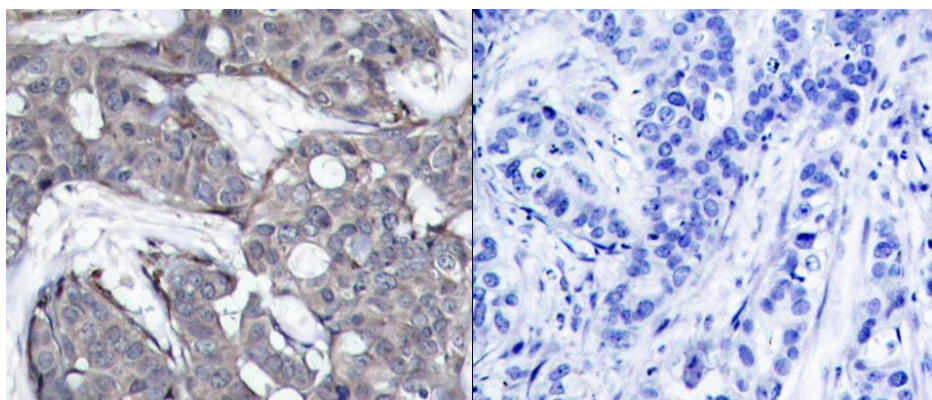


[View online »](#)

Product images:



Predicted band size: 23 kDa. Positive control: HL60 cells untreated or treated with UV lysate. Recommended dilution: 1/ 500-1000. (Gel: 10%SDS-PAGE Lane 1: HL60 cells untreated with UV lysate Lane 2: HL60 cells treated with UV lysate Lysates: 30 ug per lane Primary antibody: 1/500 dilution Secondary antibody: Goat anti Rabbit IgG - H&L (HRP) at 1/10000 dilution Exposure time: 1 minute)



Predicted cell location: Cytoplasm; Nucleus. Positive control: Human breast carcinoma tissue. Recommended dilution: 1/ 50-100 The image on the left is immunohistochemistry of paraffin-embedded human breast carcinoma tissue using HSPB1 (Phospho-Ser82) antibody at dilution 1/50, on the right is treated with the synthetic peptide. (Original magnification: x200)