

Product datasheet for **TA321364**

Orexin Receptor 2 (HCRTR2) Rabbit Polyclonal Antibody

Product data:

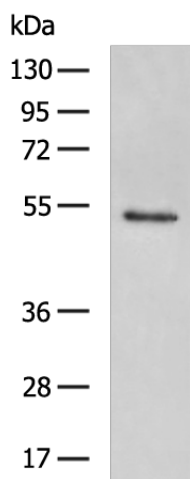
Product Type:	Primary Antibodies
Applications:	WB
Recommended Dilution:	WB: 500-2000 WB positive control: Mouse heart tissue lysate
Reactivity:	Human, Mouse, Rat
Host:	Rabbit
Isotype:	IgG
Clonality:	Polyclonal
Immunogen:	Synthetic peptide peptide corresponding to a region derived from 405-419 amino acids of human hypocretin (orexin) receptor 2
Formulation:	PBS pH7.3, 0.05% NaN ₃ , 50% glycerol
Concentration:	lot specific
Purification:	Antigen affinity purification
Conjugation:	Unconjugated
Storage:	Store at -20°C as received.
Stability:	Stable for 12 months from date of receipt.
Predicted Protein Size:	51 kDa
Gene Name:	hypocretin receptor 2
Database Link:	NP_001517 Entrez Gene 25605 Rat Entrez Gene 387285 Mouse Entrez Gene 3062 Human O43614
Background:	The protein encoded by this gene is a G-protein coupled receptor involved in the regulation of feeding behavior. The encoded protein binds the hypothalamic neuropeptides orexin A and orexin B. A related gene (HCRTR1) encodes a G-protein coupled receptor that selectively binds orexin A.
Synonyms:	OX2R
Protein Families:	Druggable Genome



[View online »](#)

Protein Pathways: Neuroactive ligand-receptor interaction

Product images:



Gel: 8%SDS-PAGE
Lysate: 40 μ g
Lane: Mouse heart tissue lysate
Primary antibody: TA321364 (HCRTR2 Antibody)
at dilution 1/800
Secondary antibody: Goat anti rabbit IgG at
1/5000 dilution
Exposure time: 1 minute