

## Product datasheet for **TA321362S**

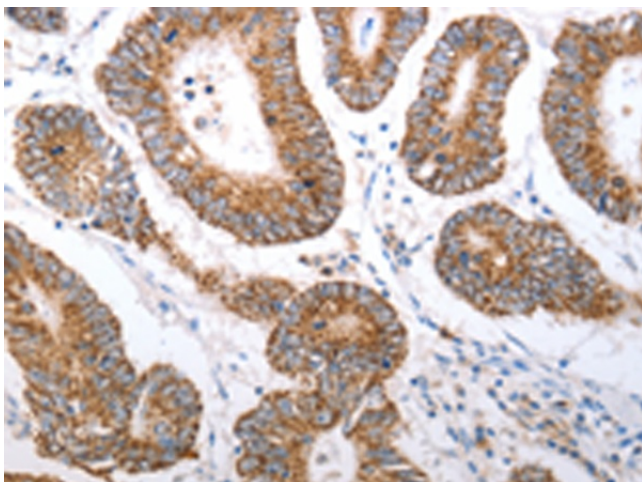
### Orexin Receptor 1 (HCRTR1) Rabbit Polyclonal Antibody

#### Product data:

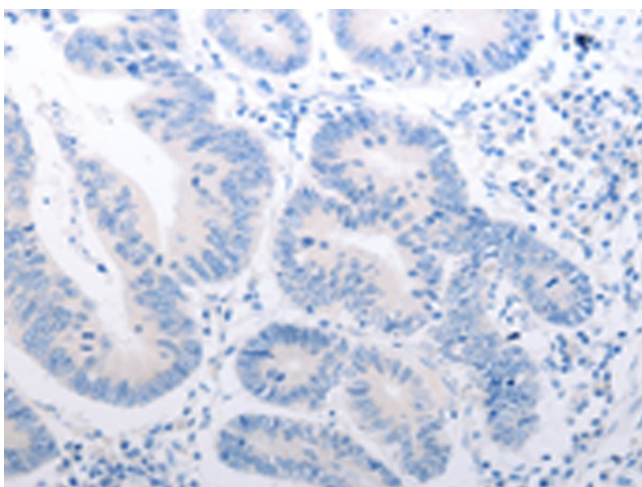
Product Type:	Primary Antibodies
Applications:	IHC
Recommended Dilution:	IHC: 50-200 Positive control: Human colon cancer Predicted cell location: Cytoplasm
Reactivity:	Human, Mouse, Rat
Host:	Rabbit
Isotype:	IgG
Clonality:	Polyclonal
Immunogen:	Synthetic peptide corresponding to a region derived from 393-405 amino acids of Human hypocretin (orexin) receptor 1
Formulation:	PBS pH7.3, 0.05% NaN <sub>3</sub> , 50% glycerol
Purification:	Antigen affinity purification
Conjugation:	Unconjugated
Storage:	Store at -20°C as received.
Stability:	Stable for 12 months from date of receipt.
Gene Name:	hypocretin receptor 1
Database Link:	<a href="#">NP_001516</a> <a href="#">Entrez Gene 25593 Rat</a> <a href="#">Entrez Gene 230777 Mouse</a> <a href="#">Entrez Gene 3061 Human</a> <a href="#">O43613</a>
Background:	The protein encoded by this gene is a G-protein coupled receptor involved in the regulation of feeding behavior. The encoded protein selectively binds the hypothalamic neuropeptide orexin A. A related gene (HCRTR2) encodes a G-protein coupled receptor that binds orexin A and orexin B.
Synonyms:	OX1R
Protein Families:	Druggable Genome, ES Cell Differentiation/IPS, GPCR, Transmembrane
Protein Pathways:	Neuroactive ligand-receptor interaction



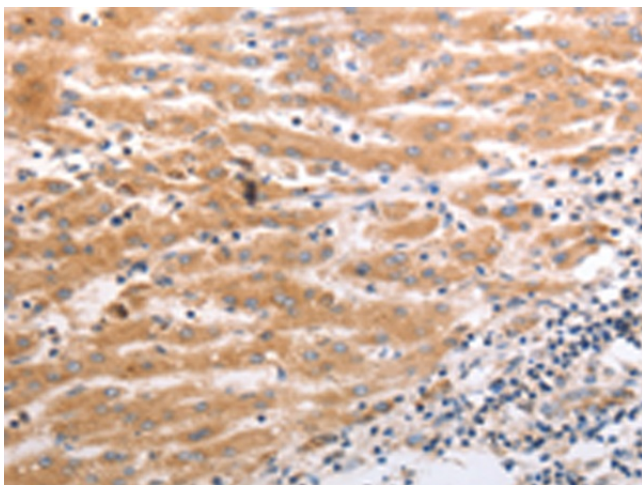
[View online »](#)

**Product images:**

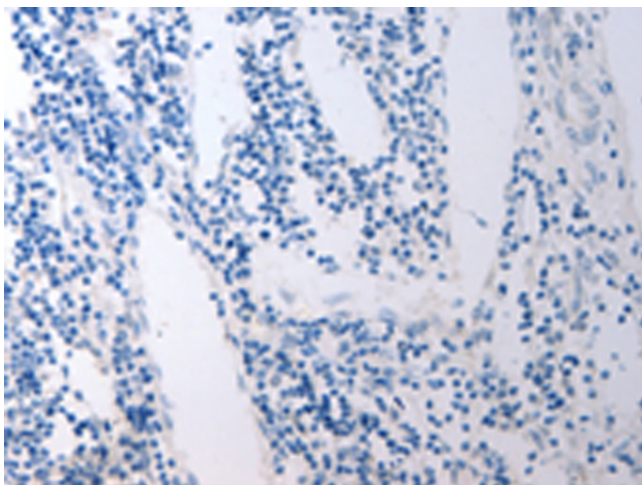
Immunohistochemistry of paraffin-embedded Human colon cancer tissue using [TA321362] (HCRTR1 Antibody) at dilution 1/70 (Original magnification:  $\times 200$ )



Immunohistochemistry of paraffin-embedded Human colon cancer tissue using [TA321362] (HCRTR1 Antibody) at dilution 1/70, treated with synthetic peptide. (Original magnification:  $\times 200$ )



Immunohistochemistry of paraffin-embedded Human liver cancer tissue using [TA321362] (HCRTR1 Antibody) at dilution 1/70 (Original magnification:  $\times 200$ )



Immunohistochemistry of paraffin-embedded Human liver cancer tissue using [TA321362] (HCRTR1 Antibody) at dilution 1/70, treated with synthetic peptide. (Original magnification:  $\times 200$ )