

Product datasheet for **TA321359**

CXCR3 Rabbit Polyclonal Antibody

Product data:

Product Type:	Primary Antibodies
Applications:	IHC
Recommended Dilution:	IHC: 25-100 Positive control: Human lung cancer Predicted cell location: Cytoplasm
Reactivity:	Human, Mouse, Rat
Host:	Rabbit
Isotype:	IgG
Clonality:	Polyclonal
Immunogen:	Synthetic peptide corresponding to a region derived from 351-364 amino acids of Human chemokine (C-X-C motif) receptor 3
Formulation:	PBS pH7.3, 0.05% NaN ₃ , 50% glycerol
Concentration:	lot specific
Purification:	Antigen affinity purification
Conjugation:	Unconjugated
Storage:	Store at -20°C as received.
Stability:	Stable for 12 months from date of receipt.
Predicted Protein Size:	46 kDa
Gene Name:	C-X-C motif chemokine receptor 3
Database Link:	NP_001495 Entrez Gene 12766 Mouse Entrez Gene 84475 Rat Entrez Gene 2833 Human P49682



[View online »](#)

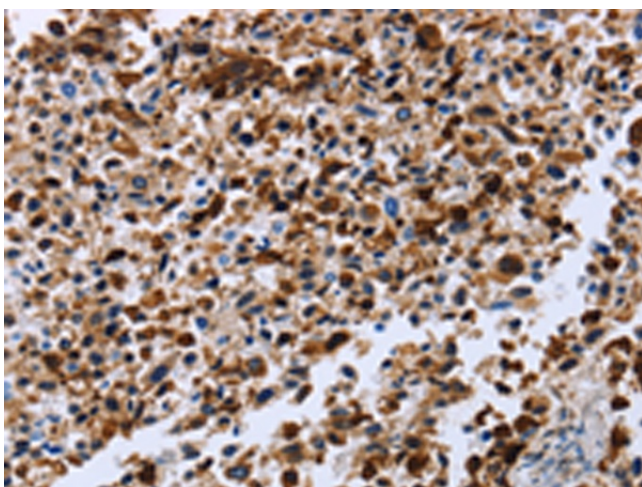
Background: This gene encodes a G protein-coupled receptor with selectivity for three chemokines; termed CXCL9/Mig (monokine induced by interferon-g); CXCL10/IP10 (interferon-g-inducible 10 kDa protein) and CXCL11/I-TAC (interferon-inducible T cell a-chemoattractant). Binding of chemokines to this protein induces cellular responses that are involved in leukocyte traffic; most notably integrin activation; cytoskeletal changes and chemotactic migration. Alternatively spliced transcript variants encoding different isoforms have been found for this gene. One of the isoforms (CXCR3-B) shows high affinity binding to chemokine; CXCL4/PF4.

Synonyms: CD182; CD183; CKR-L2; CMKAR3; GPR9; IP10-R; Mig-R; MigR

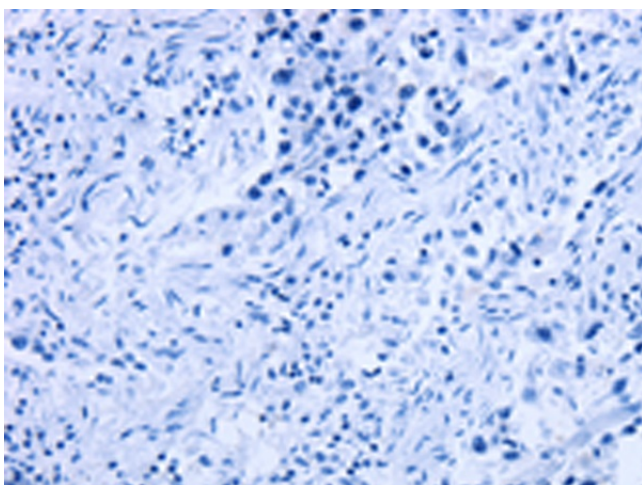
Protein Families: Druggable Genome, GPCR, Transmembrane

Protein Pathways: Chemokine signaling pathway, Cytokine-cytokine receptor interaction

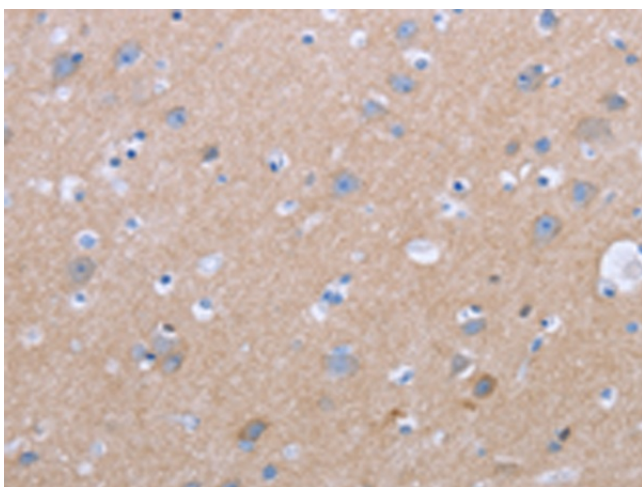
Product images:



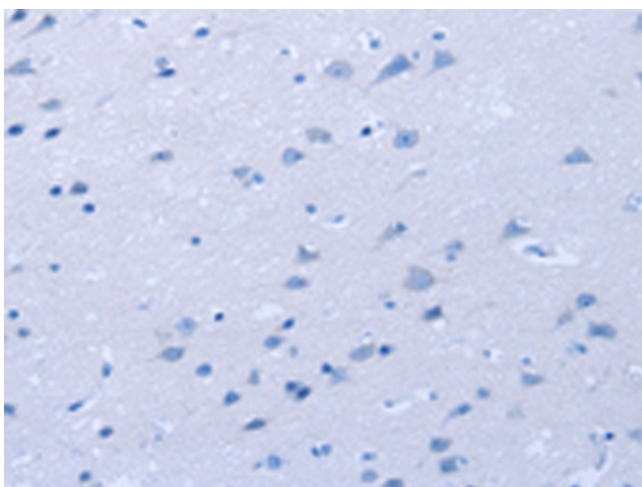
Immunohistochemistry of paraffin-embedded Human lung cancer tissue using TA321359 (CXCR3 Antibody) at dilution 1/20 (Original magnification: x200)



Immunohistochemistry of paraffin-embedded Human lung cancer tissue using TA321359 (CXCR3 Antibody) at dilution 1/20, treated with synthetic peptide. (Original magnification: x200)



Immunohistochemistry of paraffin-embedded Human brain tissue using TA321359 (CXCR3 Antibody) at dilution 1/20 (Original magnification: ×200)



Immunohistochemistry of paraffin-embedded Human brain tissue using TA321359 (CXCR3 Antibody) at dilution 1/20, treated with synthetic peptide. (Original magnification: ×200)