

Product datasheet for **TA321358**

GFR alpha 3 (GFRA3) Rabbit Polyclonal Antibody

Product data:

Product Type:	Primary Antibodies
Applications:	IHC
Recommended Dilution:	IHC: 50-150 Positive control: Human esophagus cancer Predicted cell location: Cytoplasm, Cell membrane
Reactivity:	Human, Mouse, Rat
Host:	Rabbit
Isotype:	IgG
Clonality:	Polyclonal
Immunogen:	Synthetic peptide corresponding to a region derived from 346-359 amino acids of Human GDNF family receptor alpha 3
Formulation:	PBS pH7.3, 0.05% NaN ₃ , 50% glycerol
Concentration:	lot specific
Purification:	Antigen affinity purification
Conjugation:	Unconjugated
Storage:	Store at -20°C as received.
Stability:	Stable for 12 months from date of receipt.
Gene Name:	GDNF family receptor alpha 3
Database Link:	NP_001487 Entrez Gene 14587 MouseEntrez Gene 84422 RatEntrez Gene 2676 Human O60609



[View online »](#)

Background:

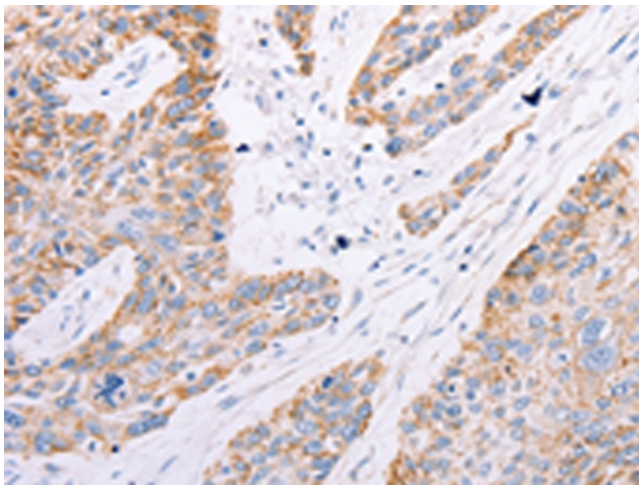
GDNF family receptor alpha-3 is a protein that in humans is encoded by the GFRA3 gene. The protein encoded by this gene is a glycosylphosphatidylinositol(GPI)-linked cell surface receptor and a member of the GDNF receptor family. It forms a signaling receptor complex with RET tyrosine kinase receptor and binds the ligand; artemin. Widely expressed in adult and fetus which exhibit a similar pattern. Essentially not expressed in the central nervous system; but highly expressed in several sensory and sympathetic ganglia of the peripheral nervous system. Moderate expression in many non-neuronal tissues; particularly those of the digestive and urogenital systems; but high expression in stomach and appendix. Several types of glandular tissues show low expression.

Synonyms:

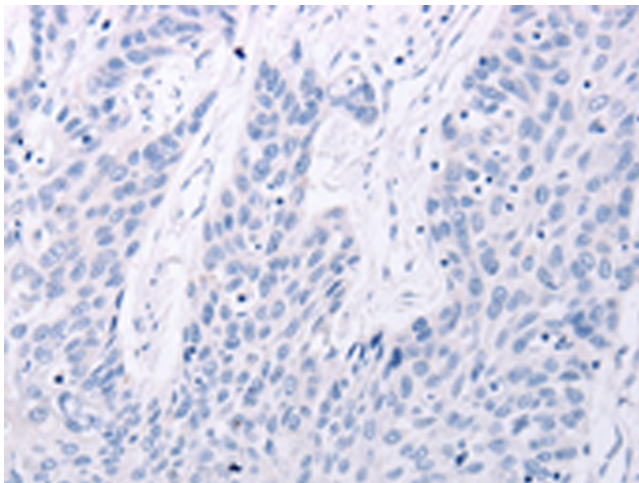
GDNFR3

Protein Families:

Druggable Genome

Product images:

Immunohistochemistry of paraffin-embedded Human esophagus cancer tissue using TA321358 (GFRA3 Antibody) at dilution 1/60 (Original magnification: x200)



Immunohistochemistry of paraffin-embedded Human esophagus cancer tissue using TA321358 (GFRA3 Antibody) at dilution 1/60, treated with synthetic peptide. (Original magnification: x200)