

## Product datasheet for **TA321357**

### GFR alpha 3 (GFRA3) Rabbit Polyclonal Antibody

#### Product data:

Product Type:	Primary Antibodies
Applications:	IHC, WB
Recommended Dilution:	WB: 1000-3000 WB positive control: Human fetal kidney and brain tissue IHC: 20-100 Positive control: Human liver cancer Predicted cell location: Cytoplasm
Reactivity:	Human, Mouse, Rat
Host:	Rabbit
Isotype:	IgG
Clonality:	Polyclonal
Immunogen:	Synthetic peptide corresponding to a region derived from 346-359 amino acids of Human GDNF family receptor alpha 3
Formulation:	PBS pH7.3, 0.05% NaN <sub>3</sub> , 50% glycerol
Concentration:	lot specific
Purification:	Antigen affinity purification
Conjugation:	Unconjugated
Storage:	Store at -20°C as received.
Stability:	Stable for 12 months from date of receipt.
Predicted Protein Size:	44 kDa
Gene Name:	GDNF family receptor alpha 3
Database Link:	<a href="#">NP_001487</a> <a href="#">Entrez Gene 14587 Mouse</a> <a href="#">Entrez Gene 84422 Rat</a> <a href="#">Entrez Gene 2676 Human</a> <a href="#">O60609</a>



[View online »](#)

**Background:**

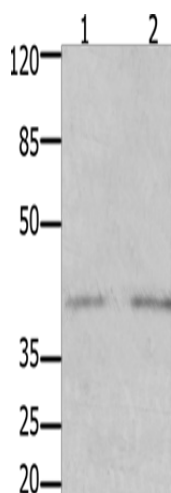
GDNF family receptor alpha-3 is a protein that in humans is encoded by the GFRA3 gene. The protein encoded by this gene is a glycosylphosphatidylinositol(GPI)-linked cell surface receptor and a member of the GDNF receptor family. It forms a signaling receptor complex with RET tyrosine kinase receptor and binds the ligand; artemin. Widely expressed in adult and fetus which exhibit a similar pattern. Essentially not expressed in the central nervous system; but highly expressed in several sensory and sympathetic ganglia of the peripheral nervous system. Moderate expression in many non-neuronal tissues; particularly those of the digestive and urogenital systems; but high expression in stomach and appendix. Several types of glandular tissues show low expression.

**Synonyms:**

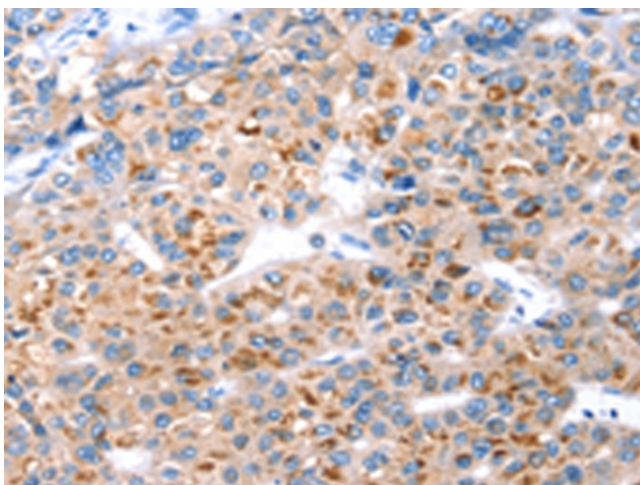
GDNFR3

**Protein Families:**

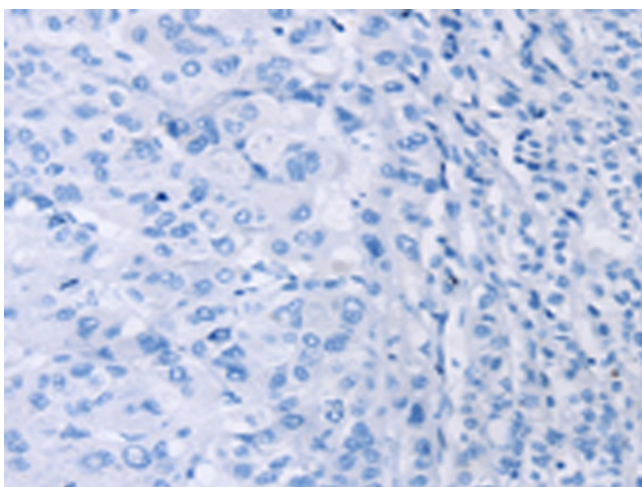
Druggable Genome

**Product images:**

Gel: 10%SDS-PAGE  
Lysate: 40 µg  
Lane 1-2: Human fetal kidney tissue  
Human brain tissue  
Primary antibody: TA321357 (GFRA3 Antibody) at dilution 1/1000  
Secondary antibody: Goat anti rabbit IgG at 1/8000 dilution  
Exposure time: 5 minutes



Immunohistochemistry of paraffin-embedded Human liver cancer tissue using TA321357 (GFRA3 Antibody) at dilution 1/20 (Original magnification: ×200)



Immunohistochemistry of paraffin-embedded Human liver cancer tissue using TA321357 (GFRA3 Antibody) at dilution 1/20, treated with synthetic peptide. (Original magnification: ×200)