

## Product datasheet for **TA321353S**

### Frizzled 2 (FZD2) Rabbit Polyclonal Antibody

#### Product data:

Product Type:	Primary Antibodies
Applications:	IHC
Recommended Dilution:	IHC: 25-100 Positive control: Human renal cancer Predicted cell location: Cytoplasm, Cell membrane
Reactivity:	Human, Mouse, Rat
Host:	Rabbit
Isotype:	IgG
Clonality:	Polyclonal
Immunogen:	Synthetic peptide corresponding to a region derived from 188-190 amino acids of human led family receptor 2
Formulation:	PBS pH7.3, 0.05% NaN <sub>3</sub> , 50% glycerol
Purification:	Antigen affinity purification
Conjugation:	Unconjugated
Storage:	Store at -20°C as received.
Stability:	Stable for 12 months from date of receipt.
Gene Name:	frizzled class receptor 2
Database Link:	<a href="#">NP_001457</a> <a href="#">Entrez Gene 57265 Mouse</a> <a href="#">Entrez Gene 64512 Rat</a> <a href="#">Entrez Gene 2535 Human</a> <a href="#">Q14332</a>

**Background:** This intronless gene is a member of the frizzled gene family. Members of this family encode seven-transmembrane domain proteins that are receptors for the wingless type MMTV integration site family of signaling proteins. This gene encodes a protein that is coupled to the beta-catenin canonical signaling pathway. Competition between the wingless-type MMTV integration site family; member 3A and wingless-type MMTV integration site family; member 5A gene products for binding of this protein is thought to regulate the beta-catenin-dependent and -independent pathways.

**Synonyms:** fz-2; Fz2; fzE2; hFz2

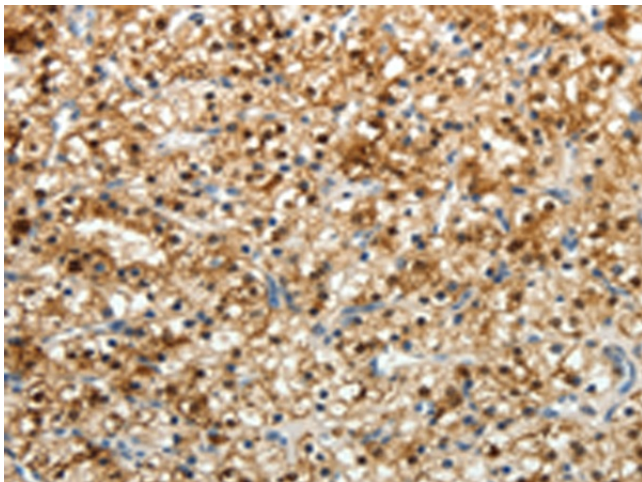


[View online »](#)

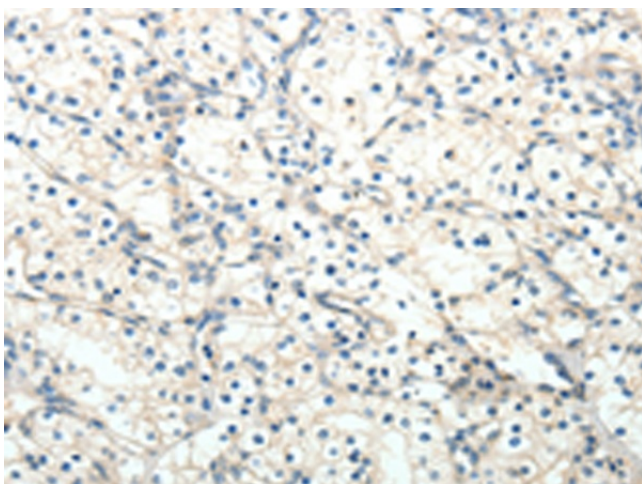
**Protein Families:** Druggable Genome, GPCR, Transmembrane

**Protein Pathways:** Basal cell carcinoma, Colorectal cancer, Melanogenesis, Pathways in cancer, Wnt signaling pathway

**Product images:**



Immunohistochemistry of paraffin-embedded Human renal cancer tissue using [TA321353] (FZD2 Antibody) at dilution 1/25 (Original magnification:  $\times 200$ )



Immunohistochemistry of paraffin-embedded Human renal cancer tissue using [TA321353] (FZD2 Antibody) at dilution 1/25, treated with synthetic peptide. (Original magnification:  $\times 200$ )