

Product datasheet for **TA321351**

Ku70 (XRCC6) Rabbit Polyclonal Antibody

Product data:

Product Type:	Primary Antibodies
Applications:	IHC
Recommended Dilution:	IHC: 10-50 Positive control: Human colon cancer Predicted cell location: Nucleus
Reactivity:	Human, Mouse
Host:	Rabbit
Isotype:	IgG
Clonality:	Polyclonal
Immunogen:	Fusion protein corresponding to a C terminal 300 amino acids of human X-ray repair complementing defective repair in Chinese hamster cells 6
Formulation:	PBS pH7.3, 0.05% NaN ₃ , 50% glycerol
Concentration:	lot specific
Purification:	Antigen affinity purification
Conjugation:	Unconjugated
Storage:	Store at -20°C as received.
Stability:	Stable for 12 months from date of receipt.
Gene Name:	X-ray repair complementing defective repair in Chinese hamster cells 6
Database Link:	NP_001460 Entrez Gene 14375 Mouse Entrez Gene 2547 Human P12956
Background:	The p70/p80 autoantigen is a nuclear complex consisting of two subunits with molecular masses of approximately 70 and 80 kDa. The complex functions as a single-stranded DNA-dependent ATP-dependent helicase. The complex may be involved in the repair of nonhomologous DNA ends such as that required for double-strand break repair; transposition; and V(D)J recombination. High levels of autoantibodies to p70 and p80 have been found in some patients with systemic lupus erythematosus.
Synonyms:	CTC75; CTCBF; G22P1; KU70; ML8; TLAA

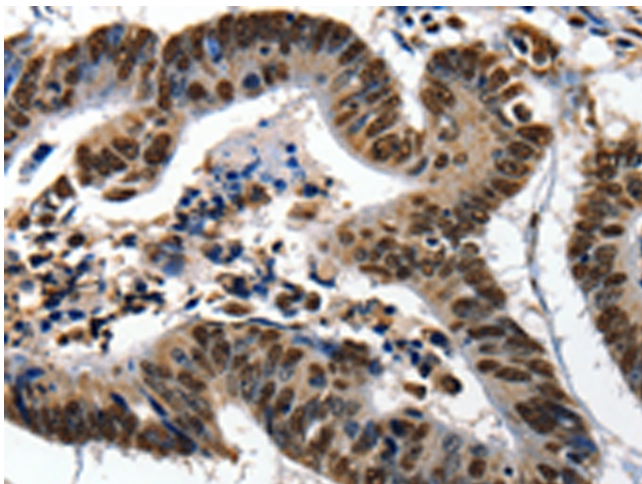


[View online »](#)

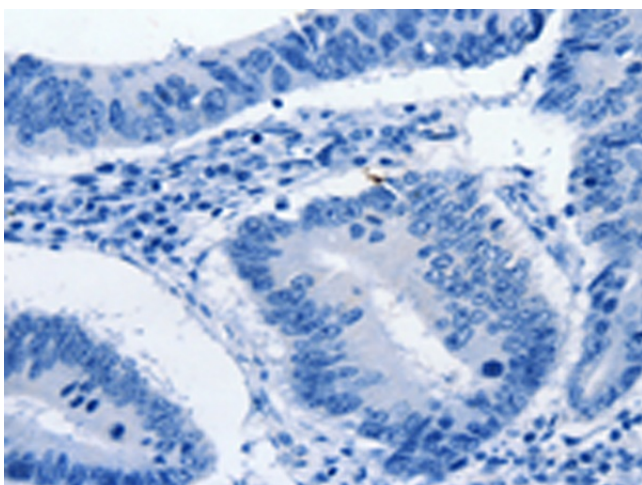
Protein Families: Druggable Genome, Transcription Factors

Protein Pathways: Non-homologous end-joining

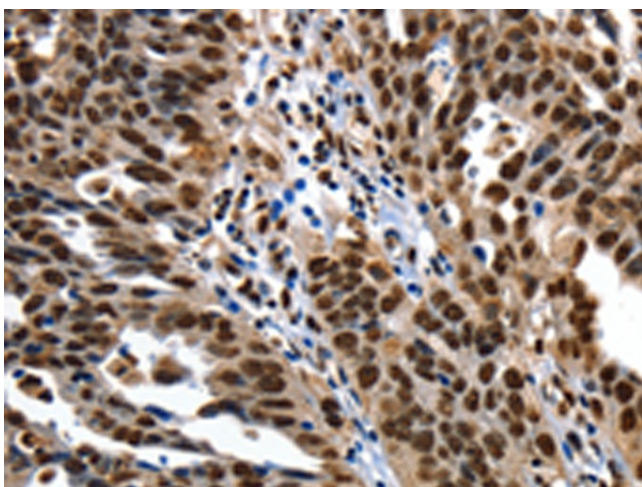
Product images:



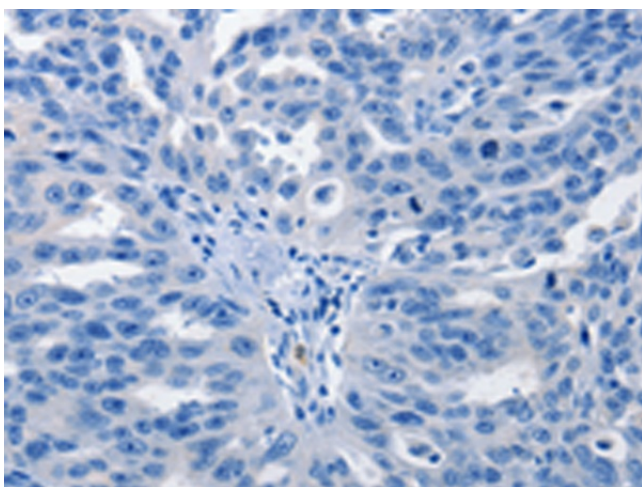
Immunohistochemistry of paraffin-embedded Human colon cancer tissue using TA321351 (XRCC6 Antibody) at dilution 1/10 (Original magnification: $\times 200$)



Immunohistochemistry of paraffin-embedded Human colon cancer tissue using TA321351 (XRCC6 Antibody) at dilution 1/10, treated with fusion protein. (Original magnification: $\times 200$)



Immunohistochemistry of paraffin-embedded Human ovarian cancer tissue using TA321351 (XRCC6 Antibody) at dilution 1/10 (Original magnification: $\times 200$)



Immunohistochemistry of paraffin-embedded Human ovarian cancer tissue using TA321351 (XRCC6 Antibody) at dilution 1/10, treated with fusion protein. (Original magnification: $\times 200$)