

Product datasheet for **TA321350**

FOXO3 Rabbit Polyclonal Antibody

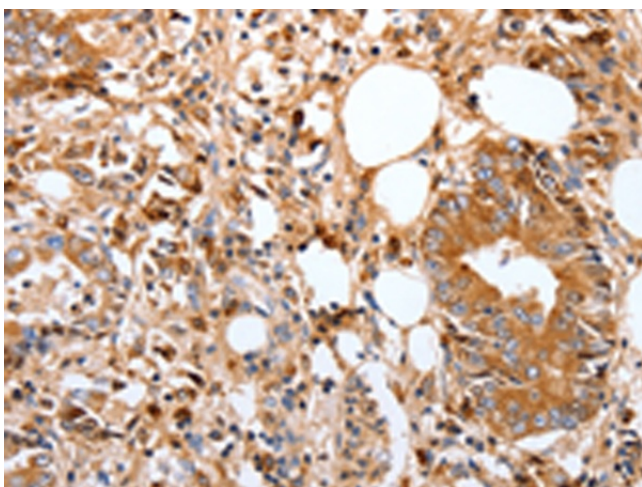
Product data:

Product Type:	Primary Antibodies
Applications:	IHC
Recommended Dilution:	IHC: 50-150 Positive control: Human stomach cancer Predicted cell location: Cytoplasm, Nucleus
Reactivity:	Human, Mouse
Host:	Rabbit
Isotype:	IgG
Clonality:	Polyclonal
Immunogen:	Synthetic peptide corresponding to a region derived from 442-454 amino acids of Human forkhead box O3
Formulation:	PBS pH7.3, 0.05% NaN ₃ , 50% glycerol
Concentration:	lot specific
Purification:	Antigen affinity purification
Conjugation:	Unconjugated
Storage:	Store at -20°C as received.
Stability:	Stable for 12 months from date of receipt.
Gene Name:	forkhead box O3
Database Link:	NP_001446 Entrez Gene 56484 Mouse Entrez Gene 2309 Human O43524

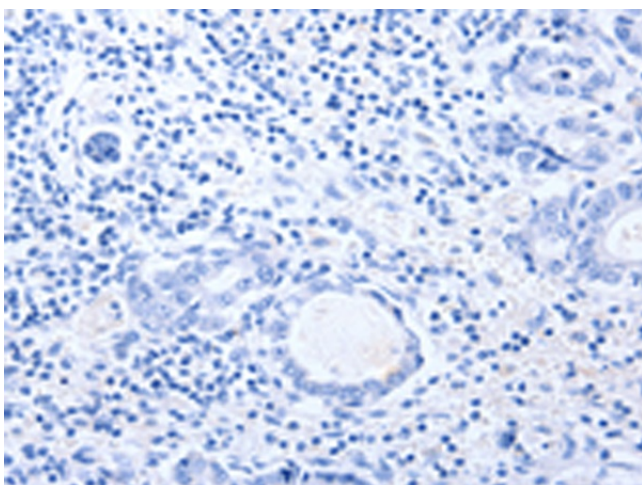


[View online »](#)

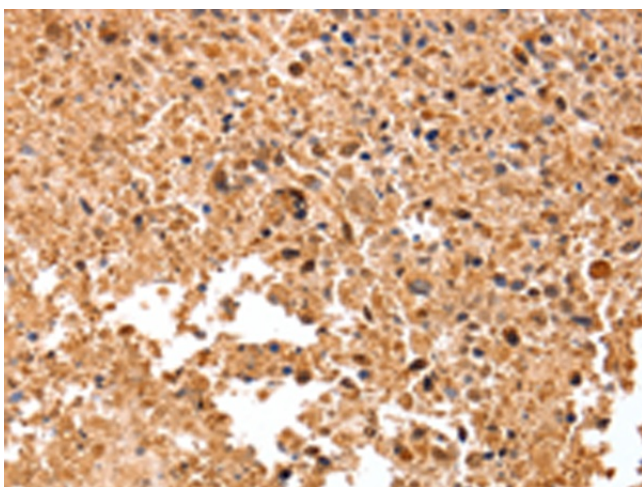
- Background:** This gene belongs to the forkhead family of transcription factors which are characterized by a distinct forkhead domain. This gene likely functions as a trigger for apoptosis through expression of genes necessary for cell death. Translocation of this gene with the MLL gene is associated with secondary acute leukemia. Alternatively spliced transcript variants encoding the same protein have been observed. Interacts with YWHAB/14-3-3-beta and YWHAZ/14-3-3-zeta; which are required for cytosolic sequestration. Upon oxidative stress; interacts with STK4/MST1; which disrupts interaction with YWHAB/14-3-3-beta and leads to nuclear translocation. Interacts with PIM1. Interacts with DDIT3/CHOP.
- Synonyms:** AF6q21; FKHL1; FKHL1P2; FOXO2; FOXO3A
- Protein Families:** Druggable Genome, Transcription Factors
- Protein Pathways:** Chemokine signaling pathway, Endometrial cancer, Neurotrophin signaling pathway, Non-small cell lung cancer

Product images:

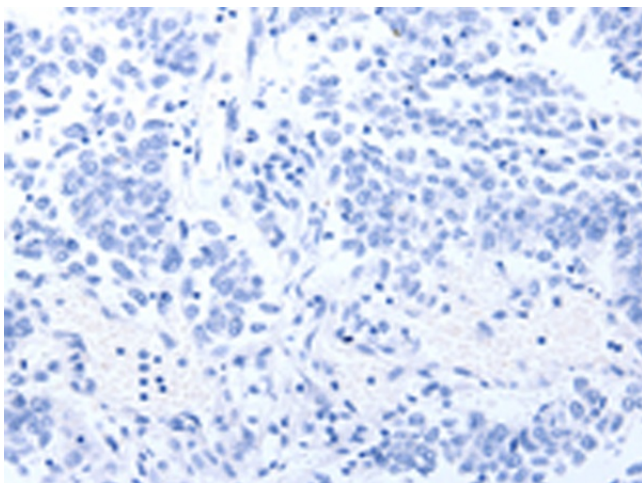
Immunohistochemistry of paraffin-embedded Human stomach cancer tissue using TA321350 (FOXO3 Antibody) at dilution 1/17 (Original magnification: $\times 200$)



Immunohistochemistry of paraffin-embedded Human stomach cancer tissue using TA321350 (FOXO3 Antibody) at dilution 1/17, treated with synthetic peptide. (Original magnification: $\times 200$)



Immunohistochemistry of paraffin-embedded Human lung cancer tissue using TA321350 (FOXO3 Antibody) at dilution 1/17 (Original magnification: $\times 200$)



Immunohistochemistry of paraffin-embedded Human lung cancer tissue using TA321350 (FOXO3 Antibody) at dilution 1/17, treated with synthetic peptide. (Original magnification: $\times 200$)