

Product datasheet for **TA321343**

DAP5 (EIF4G2) Rabbit Polyclonal Antibody

Product data:

Product Type:	Primary Antibodies
Applications:	WB
Recommended Dilution:	WB: 500-2000 WB positive control: Hela, HepG2 and NIH/3T3 cells
Reactivity:	Human, Mouse
Host:	Rabbit
Isotype:	IgG
Clonality:	Polyclonal
Immunogen:	Synthetic peptide corresponding to a region derived from 796-812 amino acids of Human Eukaryotic translation initiation factor 4 gamma 2
Formulation:	PBS pH7.3, 0.05% NaN ₃ , 50% glycerol
Concentration:	lot specific
Purification:	Antigen affinity purification
Conjugation:	Unconjugated
Storage:	Store at -20°C as received.
Stability:	Stable for 12 months from date of receipt.
Predicted Protein Size:	103 kDa
Gene Name:	eukaryotic translation initiation factor 4 gamma 2
Database Link:	NP_001409 Entrez Gene 13690 Mouse Entrez Gene 1982 Human P78344



[View online »](#)

Background:

Translation initiation is mediated by specific recognition of the cap structure by eukaryotic translation initiation factor 4F (eIF4F); which is a cap binding protein complex that consists of three subunits: eIF4A; eIF4E and eIF4G. The protein encoded by this gene shares similarity with the C-terminal region of eIF4G that contains the binding sites for eIF4A and eIF3; eIF4G; in addition; contains a binding site for eIF4E at the N-terminus. Unlike eIF4G; which supports cap-dependent and independent translation; this gene product functions as a general repressor of translation by forming translationally inactive complexes. In vitro and in vivo studies indicate that translation of this mRNA initiates exclusively at a non-AUG (GUG) codon. Alternatively spliced transcript variants encoding different isoforms of this gene have been described.

Synonyms:

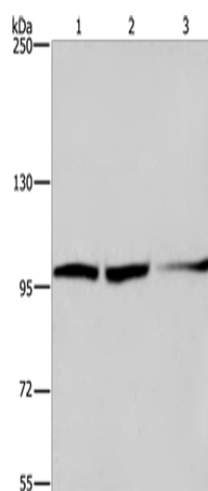
AAG1; DAP5; NAT1; P97

Protein Families:

Transcription Factors

Protein Pathways:

Viral myocarditis

Product images:

Gel: 6%SDS-PAGE

Lysate: 40 µg

Lane 1-3: HeLa cells

HepG2 cells

NIH/3T3 cells

Primary antibody: TA321343 (EIF4G2 Antibody) at dilution 1/300

Secondary antibody: Goat anti rabbit IgG at 1/8000 dilution

Exposure time: 1 minute