

Product datasheet for **TA321340**

EDG1 (S1PR1) Rabbit Polyclonal Antibody

Product data:

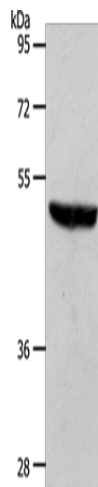
Product Type:	Primary Antibodies
Applications:	WB
Recommended Dilution:	WB: 500-2000 WB positive control: Mouse brain tissue
Reactivity:	Human, Mouse, Rat
Host:	Rabbit
Isotype:	IgG
Clonality:	Polyclonal
Immunogen:	Synthetic peptide corresponding to a region derived from 359-372 amino acids of human sphingosine-1-phosphate receptor 1
Formulation:	PBS pH7.3, 0.05% NaN ₃ , 50% glycerol
Concentration:	lot specific
Purification:	Antigen affinity purification
Conjugation:	Unconjugated
Storage:	Store at -20°C as received.
Stability:	Stable for 12 months from date of receipt.
Predicted Protein Size:	43 kDa
Gene Name:	sphingosine-1-phosphate receptor 1
Database Link:	NP_001391 Entrez Gene 13609 Mouse Entrez Gene 29733 Rat Entrez Gene 1901 Human P21453
Background:	The protein encoded by this gene is structurally similar to G protein-coupled receptors and is highly expressed in endothelial cells. It binds the ligand sphingosine-1-phosphate with high affinity and high specificity; and suggested to be involved in the processes that regulate the differentiation of endothelial cells. Activation of this receptor induces cell-cell adhesion.
Synonyms:	CD363; CHEDG1; D1S3362; ECGF1; EDG-1; EDG1; S1P1
Protein Families:	Druggable Genome, GPCR, Transmembrane



[View online »](#)

Protein Pathways: Neuroactive ligand-receptor interaction

Product images:



Gel: 10%SDS-PAGE
Lysate: 40 µg
Lane: Mouse brain tissue
Primary antibody: TA321340 (S1PR1 Antibody) at dilution 1/700
Secondary antibody: Goat anti rabbit IgG at 1/8000 dilution
Exposure time: 10 seconds