

## Product datasheet for **TA321339**

### DUSP4 Rabbit Polyclonal Antibody

#### Product data:

Product Type:	Primary Antibodies
Applications:	IHC, WB
Recommended Dilution:	WB: 500-2000 WB positive control: RAW264.7 cells IHC: 50-150 Positive control: Human ovarian cancer Predicted cell location: Cytoplasm, Nucleus
Reactivity:	Human, Mouse, Rat
Host:	Rabbit
Isotype:	IgG
Clonality:	Polyclonal
Immunogen:	Fusion protein corresponding to a region derived from 197-394 amino acids of human dual specificity phosphatase 4
Formulation:	PBS pH7.3, 0.05% NaN <sub>3</sub> , 50% glycerol
Concentration:	lot specific
Purification:	Antigen affinity purification
Conjugation:	Unconjugated
Storage:	Store at -20°C as received.
Stability:	Stable for 12 months from date of receipt.
Predicted Protein Size:	43 kDa
Gene Name:	dual specificity phosphatase 4
Database Link:	<a href="#">NP_001385</a> <a href="#">Entrez Gene 60587 Rat</a> <a href="#">Entrez Gene 319520 Mouse</a> <a href="#">Entrez Gene 1846 Human</a> <a href="#">Q13115</a>



[View online »](#)

**Background:**

The protein encoded by this gene is a member of the dual specificity protein phosphatase subfamily. These phosphatases inactivate their target kinases by dephosphorylating both the phosphoserine/threonine and phosphotyrosine residues. They negatively regulate members of the mitogen-activated protein (MAP) kinase superfamily (MAPK/ERK; SAPK/JNK; p38); which are associated with cellular proliferation and differentiation. Different members of the family of dual specificity phosphatases show distinct substrate specificities for various MAP kinases; different tissue distribution and subcellular localization; and different modes of inducibility of their expression by extracellular stimuli. This gene product inactivates ERK1; ERK2 and JNK; is expressed in a variety of tissues; and is localized in the nucleus. Two alternatively spliced transcript variants; encoding distinct isoforms; have been observed for this gene. In addition; multiple polyadenylation sites have been reported.

**Synonyms:**

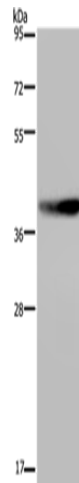
HVVH2; MKP-2; MKP2; TYP

**Protein Families:**

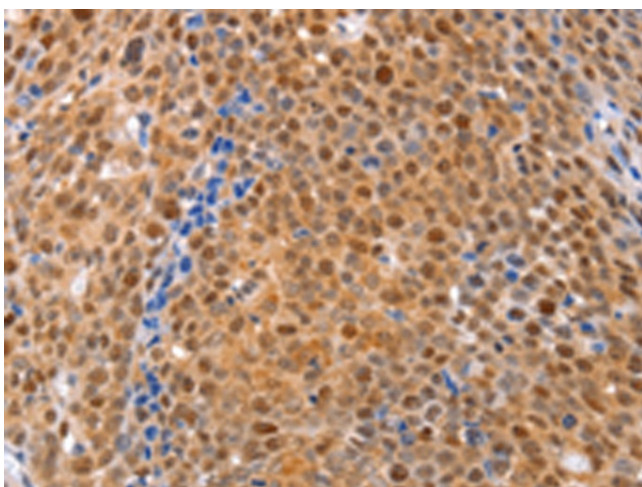
Phosphatase

**Protein Pathways:**

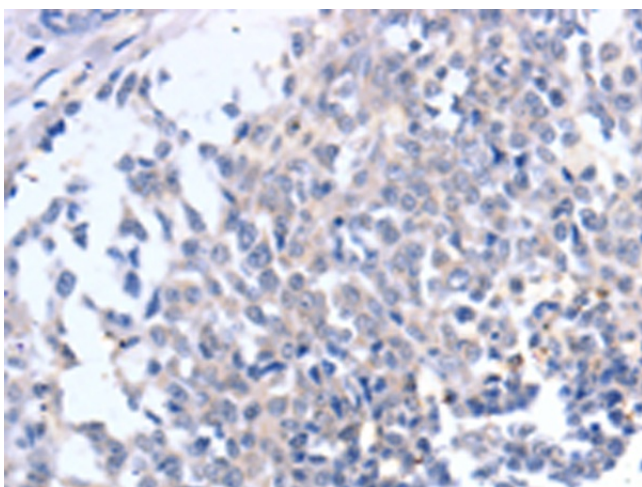
MAPK signaling pathway

**Product images:**

Gel: 10%SDS-PAGE  
Lysate: 30 µg  
Lane: RAW264.7 cells  
Primary antibody: TA321339 (DUSP4 Antibody) at dilution 1/600  
Secondary antibody: Goat anti rabbit IgG at 1/8000 dilution  
Exposure time: 1 minute



Immunohistochemistry of paraffin-embedded Human ovarian cancer tissue using TA321339 (DUSP4 Antibody) at dilution 1/30 (Original magnification:  $\times 200$ )



Immunohistochemistry of paraffin-embedded Human ovarian cancer tissue using TA321339 (DUSP4 Antibody) at dilution 1/30, treated with fusion protein. (Original magnification:  $\times 200$ )