

Product datasheet for **TA321336S**

CX3CR1 Rabbit Polyclonal Antibody

Product data:

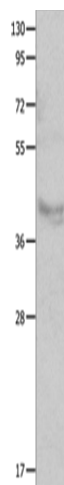
Product Type:	Primary Antibodies
Applications:	WB
Recommended Dilution:	WB: 200-1000 WB positive control: Human fetal muscle tissue
Reactivity:	Human
Host:	Rabbit
Isotype:	IgG
Clonality:	Polyclonal
Immunogen:	Synthetic peptide corresponding to a region derived from 2-21 amino acids of Human chemokine (C-X3-C motif) receptor 1
Formulation:	PBS pH7.3, 0.05% NaN ₃ , 50% glycerol
Purification:	Antigen affinity purification
Conjugation:	Unconjugated
Storage:	Store at -20°C as received.
Stability:	Stable for 12 months from date of receipt.
Predicted Protein Size:	41 kDa
Gene Name:	C-X3-C motif chemokine receptor 1
Database Link:	NP_001328 Entrez Gene 1524 Human P49238
Background:	Fractalkine is a transmembrane protein and chemokine involved in the adhesion and migration of leukocytes. The protein encoded by this gene is a receptor for fractalkine. The encoded protein also is a coreceptor for HIV-1; and some variations in this gene lead to increased susceptibility to HIV-1 infection and rapid progression to AIDS. Four transcript variants encoding two different isoforms have been found for this gene.
Synonyms:	CCRL1; CMKBRL1; CMKDR1; GPR13; GPRV28; V28
Protein Families:	Druggable Genome, GPCR, Transmembrane



[View online »](#)

Protein Pathways: Chemokine signaling pathway, Cytokine-cytokine receptor interaction

Product images:



Gel: 10%SDS-PAGE
Lysate: 60 µg
Lane: Human fetal muscle tissue
Primary antibody: [TA321336] (CX3CR1 Antibody)
at dilution 1/100
Secondary antibody: Goat anti rabbit IgG at
1/8000 dilution
Exposure time: 1 minute