

Product datasheet for **TA321334S**

Cathepsin Z (CTSZ) Rabbit Polyclonal Antibody

Product data:

Product Type:	Primary Antibodies
Applications:	IHC, WB
Recommended Dilution:	WB: 500-2000 WB positive control: Human liver tissue lysate IHC: 100-300 Positive control: Human colorectal cancer Predicted cell location: Cytoplasm
Reactivity:	Human, Mouse, Rat
Host:	Rabbit
Isotype:	IgG
Clonality:	Polyclonal
Immunogen:	Fusion protein corresponding to a region derived from 62-303 amino acids of Human Cathepsin Z
Formulation:	PBS pH7.3, 0.05% NaN ₃ , 50% glycerol
Purification:	Antigen affinity purification
Conjugation:	Unconjugated
Storage:	Store at -20°C as received.
Stability:	Stable for 12 months from date of receipt.
Predicted Protein Size:	34 kDa
Gene Name:	cathepsin Z
Database Link:	NP_001327 Entrez Gene 64138 MouseEntrez Gene 252929 RatEntrez Gene 1522 Human Q9UBR2

Background: The protein encoded by this gene is a lysosomal cysteine proteinase and member of the peptidase C1 family. It exhibits both carboxy-monopeptidase and carboxy-dipeptidase activities. The encoded protein has also been known as cathepsin X and cathepsin P. This gene is expressed ubiquitously in cancer cell lines and primary tumors and; like other members of this family; may be involved in tumorigenesis.



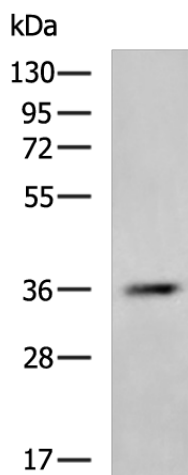
[View online »](#)

Synonyms: CTSX

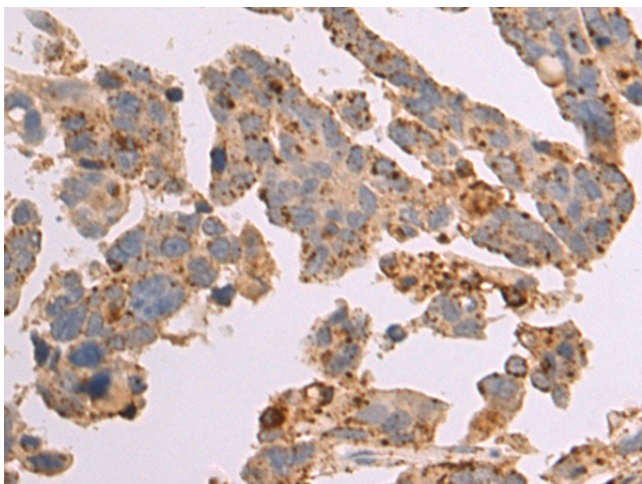
Protein Families: Druggable Genome, Protease

Protein Pathways: Lysosome

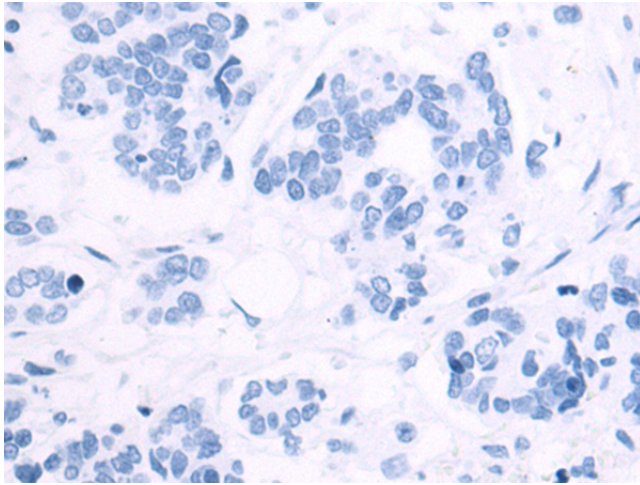
Product images:



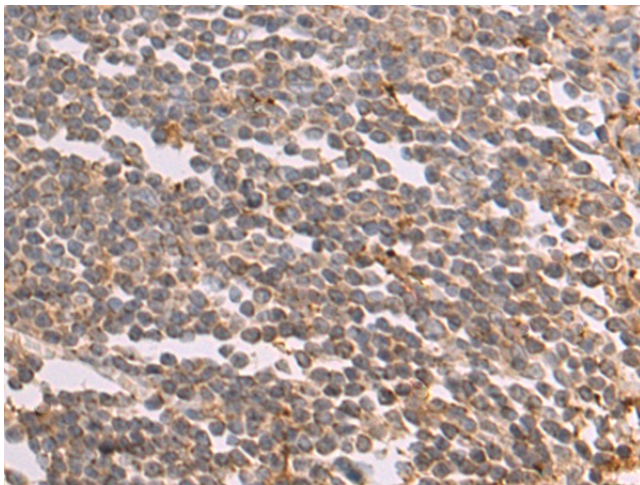
Gel: 8%SDS-PAGE
Lysate: 40 μ g
Lane: Human liver tissue lysate
Primary antibody: [TA321334] (CTSZ Antibody) at dilution 1/700
Secondary antibody: Goat anti rabbit IgG at 1/5000 dilution
Exposure time: 30 seconds



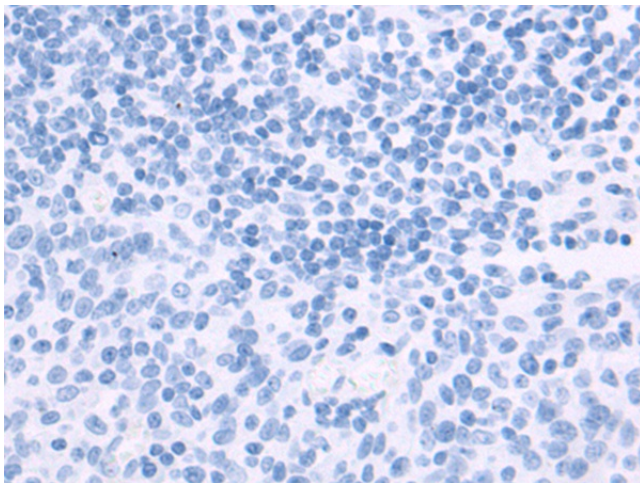
Immunohistochemistry of paraffin-embedded Human colorectal cancer tissue using [TA321334] (CTSZ Antibody) at dilution 1/90 (Original magnification: \times 200)



Immunohistochemistry of paraffin-embedded Human colorectal cancer tissue using [TA321334] (CTSZ Antibody) at dilution 1/90, treated with fusion protein. (Original magnification: $\times 200$)



Immunohistochemistry of paraffin-embedded Human tonsil tissue using [TA321334] (CTSZ Antibody) at dilution 1/90 (Original magnification: $\times 200$)



Immunohistochemistry of paraffin-embedded Human tonsil tissue using [TA321334] (CTSZ Antibody) at dilution 1/90, treated with fusion protein. (Original magnification: $\times 200$)