

## Product datasheet for **TA321333S**

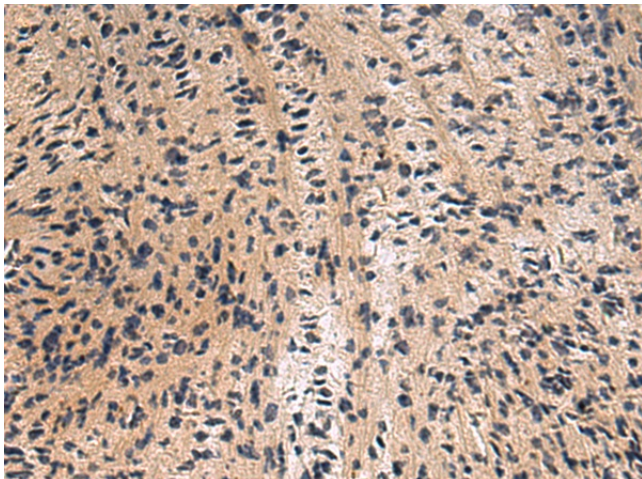
### Cathepsin Z (CTSZ) Rabbit Polyclonal Antibody

#### Product data:

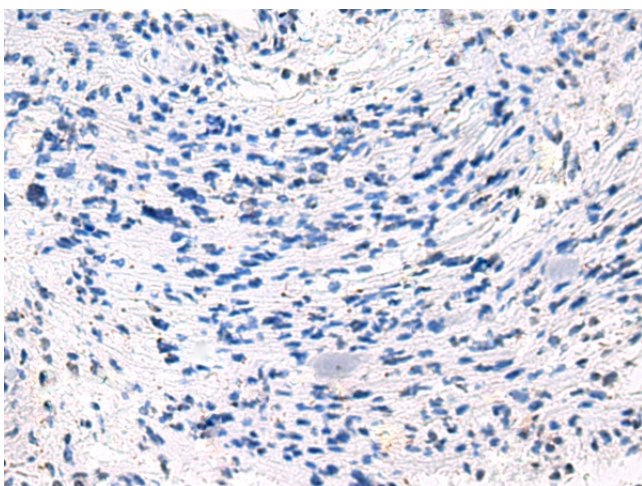
Product Type:	Primary Antibodies
Applications:	IHC
Recommended Dilution:	IHC: 50-100 Positive control: Human brain Predicted cell location: Cytoplasm
Reactivity:	Human, Mouse, Rat
Host:	Rabbit
Isotype:	IgG
Clonality:	Polyclonal
Immunogen:	Fusion protein corresponding to a region derived from 62-303 amino acids of Human Cathepsin Z
Formulation:	PBS pH7.3, 0.05% NaN <sub>3</sub> , 50% glycerol
Purification:	Antigen affinity purification
Conjugation:	Unconjugated
Storage:	Store at -20°C as received.
Stability:	Stable for 12 months from date of receipt.
Gene Name:	cathepsin Z
Database Link:	<a href="#">NP_001327</a> <a href="#">Entrez Gene 64138 Mouse</a> <a href="#">Entrez Gene 252929 Rat</a> <a href="#">Entrez Gene 1522 Human</a> <a href="#">Q9UBR2</a>
Background:	The protein encoded by this gene is a lysosomal cysteine proteinase and member of the peptidase C1 family. It exhibits both carboxy-monopeptidase and carboxy-dipeptidase activities. The encoded protein has also been known as cathepsin X and cathepsin P. This gene is expressed ubiquitously in cancer cell lines and primary tumors and; like other members of this family; may be involved in tumorigenesis.
Synonyms:	CTSX
Protein Families:	Druggable Genome, Protease
Protein Pathways:	Lysosome



[View online »](#)

**Product images:**

Immunohistochemistry of paraffin-embedded Human brain tissue using [TA321333] (CTSZ Antibody) at dilution 1/25 (Original magnification: ×200)



Immunohistochemistry of paraffin-embedded Human brain tissue using [TA321333] (CTSZ Antibody) at dilution 1/25, treated with fusion protein. (Original magnification: ×200)