

## Product datasheet for **TA321332S**

### Casein Kinase 2 beta (CSNK2B) Rabbit Polyclonal Antibody

#### Product data:

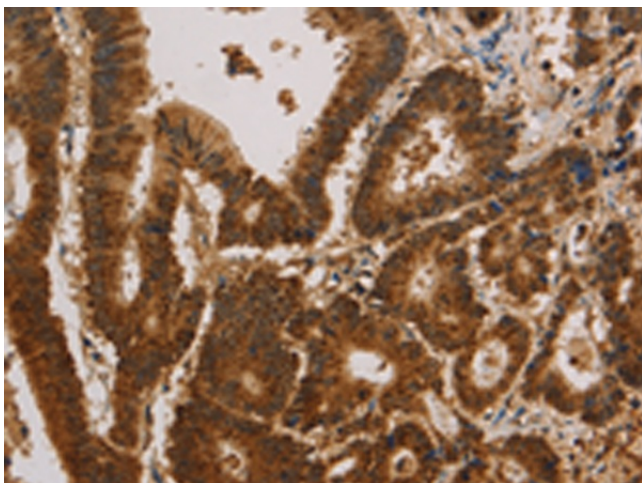
Product Type:	Primary Antibodies
Applications:	IHC
Recommended Dilution:	IHC: 50-200 Positive control: Human colon cancer Predicted cell location: Cytoplasm and Nucleus
Reactivity:	Human, Mouse, Rat
Host:	Rabbit
Isotype:	IgG
Clonality:	Polyclonal
Immunogen:	Synthetic peptide corresponding to a region derived from 201-215 amino acids of Human Casein kinase II subunit beta
Formulation:	PBS pH7.3, 0.05% NaN <sub>3</sub> , 50% glycerol
Purification:	Antigen affinity purification
Conjugation:	Unconjugated
Storage:	Store at -20°C as received.
Stability:	Stable for 12 months from date of receipt.
Gene Name:	casein kinase 2 beta
Database Link:	<a href="#">NP_001311</a> <a href="#">Entrez Gene 13001 Mouse</a> <a href="#">Entrez Gene 81650 Rat</a> <a href="#">Entrez Gene 1460 Human</a> <a href="#">P67870</a>
Background:	This gene encodes the beta subunit of casein kinase II; a ubiquitous protein kinase which regulates metabolic pathways; signal transduction; transcription; translation; and replication. The enzyme is composed of three subunits; alpha; alpha prime and beta; which form a tetrameric holoenzyme. The alpha and alpha prime subunits are catalytic; while the beta subunit serves regulatory functions. The enzyme localizes to the endoplasmic reticulum and the Golgi apparatus.
Synonyms:	CK2B; CK2N; CSK2B; G5A
Protein Families:	Druggable Genome



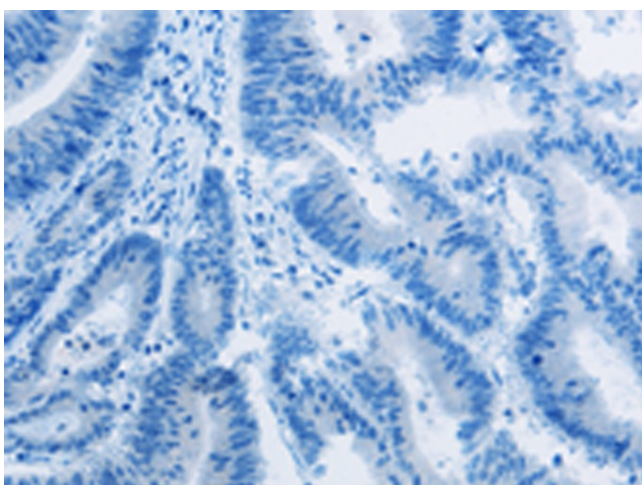
[View online »](#)

Protein Pathways: Adherens junction, Tight junction, Wnt signaling pathway

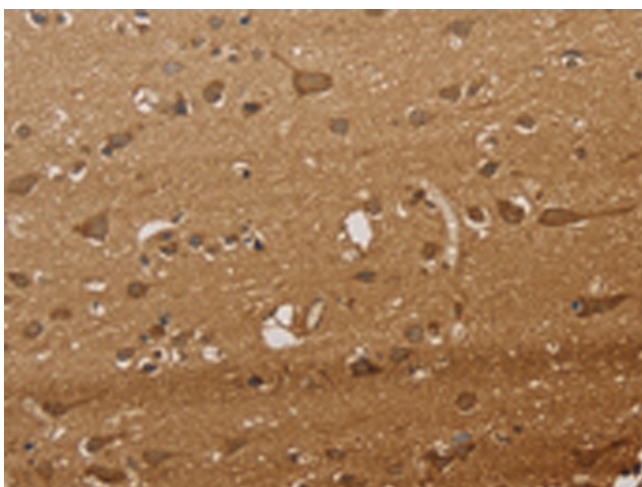
### Product images:



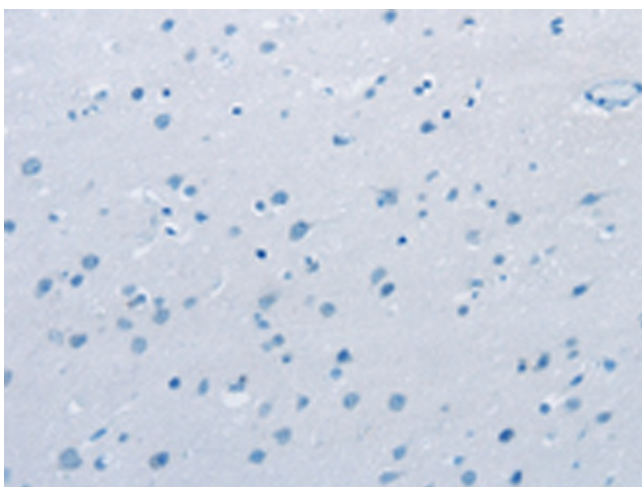
Immunohistochemistry of paraffin-embedded Human colon cancer tissue using [TA321332] (CSNK2B Antibody) at dilution 1/30 (Original magnification:  $\times 200$ )



Immunohistochemistry of paraffin-embedded Human colon cancer tissue using [TA321332] (CSNK2B Antibody) at dilution 1/30, treated with synthetic peptide. (Original magnification:  $\times 200$ )



Immunohistochemistry of paraffin-embedded Human brain tissue using [TA321332] (CSNK2B Antibody) at dilution 1/30 (Original magnification: ×200)



Immunohistochemistry of paraffin-embedded Human brain tissue using [TA321332] (CSNK2B Antibody) at dilution 1/30, treated with synthetic peptide. (Original magnification: ×200)