

Product datasheet for **TA321332**

Casein Kinase 2 beta (CSNK2B) Rabbit Polyclonal Antibody

Product data:

Product Type:	Primary Antibodies
Applications:	IHC
Recommended Dilution:	IHC: 50-200 Positive control: Human colon cancer Predicted cell location: Cytoplasm and Nucleus
Reactivity:	Human, Mouse, Rat
Host:	Rabbit
Isotype:	IgG
Clonality:	Polyclonal
Immunogen:	Synthetic peptide corresponding to a region derived from 201-215 amino acids of Human Casein kinase II subunit beta
Formulation:	PBS pH7.3, 0.05% NaN ₃ , 50% glycerol
Concentration:	lot specific
Purification:	Antigen affinity purification
Conjugation:	Unconjugated
Storage:	Store at -20°C as received.
Stability:	Stable for 12 months from date of receipt.
Gene Name:	casein kinase 2 beta
Database Link:	NP_001311 Entrez Gene 13001 Mouse Entrez Gene 81650 Rat Entrez Gene 1460 Human P67870
Background:	This gene encodes the beta subunit of casein kinase II; a ubiquitous protein kinase which regulates metabolic pathways; signal transduction; transcription; translation; and replication. The enzyme is composed of three subunits; alpha; alpha prime and beta; which form a tetrameric holoenzyme. The alpha and alpha prime subunits are catalytic; while the beta subunit serves regulatory functions. The enzyme localizes to the endoplasmic reticulum and the Golgi apparatus.
Synonyms:	CK2B; CK2N; CSK2B; G5A

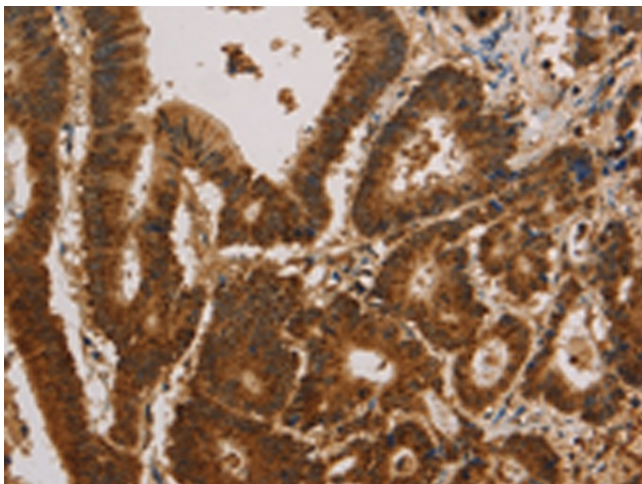


[View online »](#)

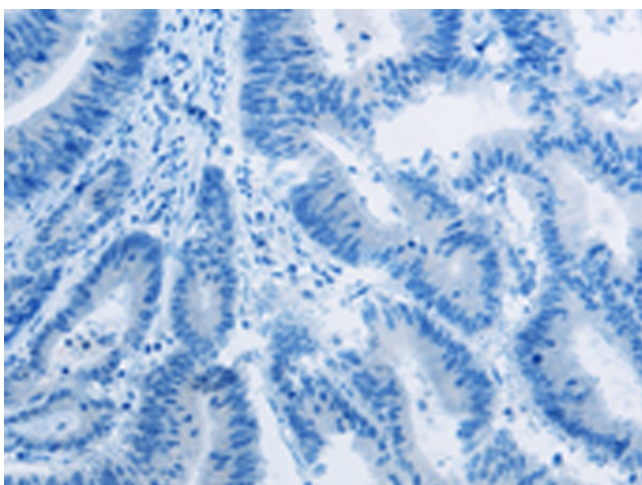
Protein Families: Druggable Genome

Protein Pathways: Adherens junction, Tight junction, Wnt signaling pathway

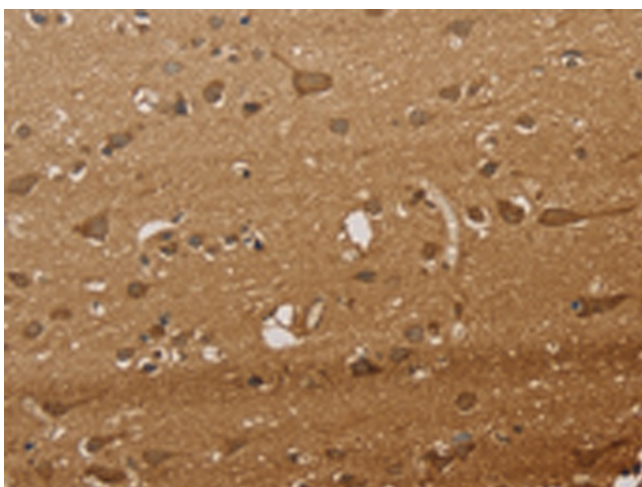
Product images:



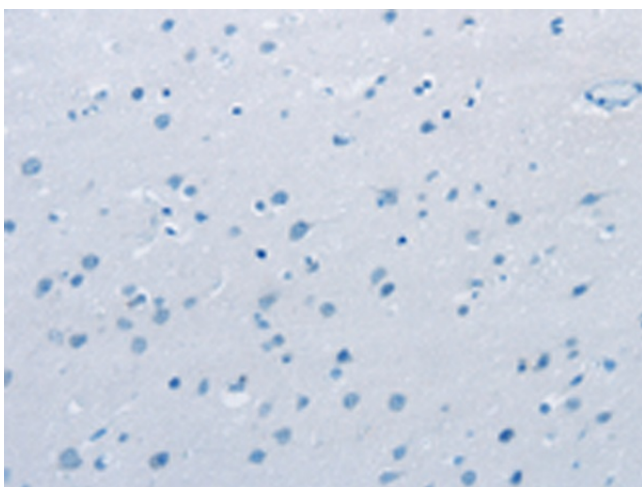
Immunohistochemistry of paraffin-embedded Human colon cancer tissue using TA321332 (CSNK2B Antibody) at dilution 1/30 (Original magnification: $\times 200$)



Immunohistochemistry of paraffin-embedded Human colon cancer tissue using TA321332 (CSNK2B Antibody) at dilution 1/30, treated with synthetic peptide. (Original magnification: $\times 200$)



Immunohistochemistry of paraffin-embedded Human brain tissue using TA321332 (CSNK2B Antibody) at dilution 1/30 (Original magnification: ×200)



Immunohistochemistry of paraffin-embedded Human brain tissue using TA321332 (CSNK2B Antibody) at dilution 1/30, treated with synthetic peptide. (Original magnification: ×200)