

Product datasheet for **TA321326**

CRMP1 Rabbit Polyclonal Antibody

Product data:

Product Type:	Primary Antibodies
Applications:	IHC, WB
Recommended Dilution:	WB: 200-1000 WB positive control: A172 cell IHC: 50-200 Positive control: Human brain Predicted cell location: Cytoplasm
Reactivity:	Human, Mouse, Rat
Host:	Rabbit
Isotype:	IgG
Clonality:	Polyclonal
Immunogen:	Synthetic peptide corresponding to a region derived from 507-522 amino acids of Human collapsin response mediator protein 1
Formulation:	PBS pH7.3, 0.05% NaN ₃ , 50% glycerol
Concentration:	lot specific
Purification:	Antigen affinity purification
Conjugation:	Unconjugated
Storage:	Store at -20°C as received.
Stability:	Stable for 12 months from date of receipt.
Predicted Protein Size:	62 kDa
Gene Name:	collapsin response mediator protein 1
Database Link:	NP_001304 Entrez Gene 12933 Mouse Entrez Gene 25415 Rat Entrez Gene 1400 Human Q14194



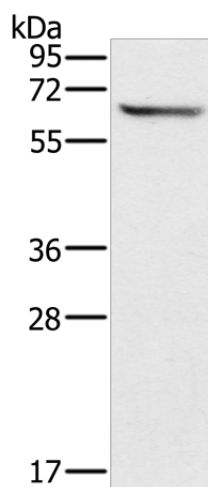
[View online »](#)

Background:

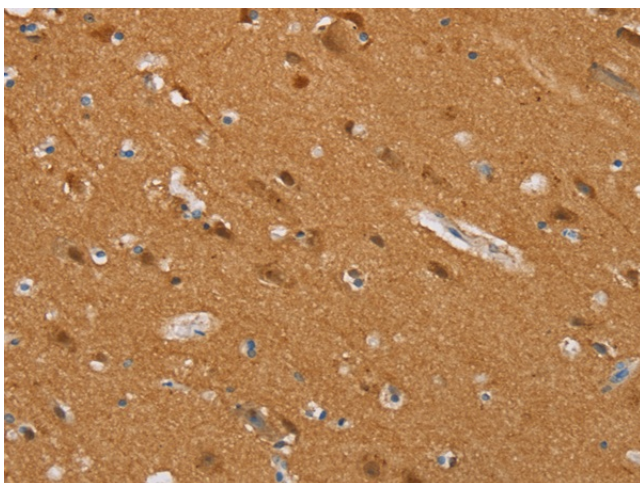
Collapsin response mediator protein 1; encoded by the CRMP1 gene; is a human protein of the CRMP family. This gene encodes a member of a family of cytosolic phosphoproteins expressed exclusively in the nervous system. The encoded protein is thought to be a part of the semaphorin signal transduction pathway implicated in semaphorin-induced growth cone collapse during neural development. Alternative splicing results in multiple transcript variants. CRMP1 mediates reelin signaling in cortical neuronal migration. Mice deficient in CRMP1 exhibit impaired long-term potentiation and impaired spatial learning and memory. CRMP1 gene overlaps with another gene called EVC. CRMP1 has been shown to interact with DPYSL2.

Synonyms:

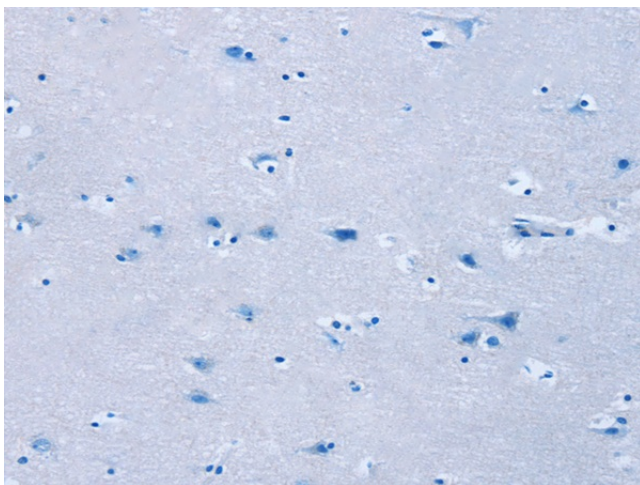
CRMP-1; DPYSL1; DRP-1; DRP1; ULIP-3

Product images:

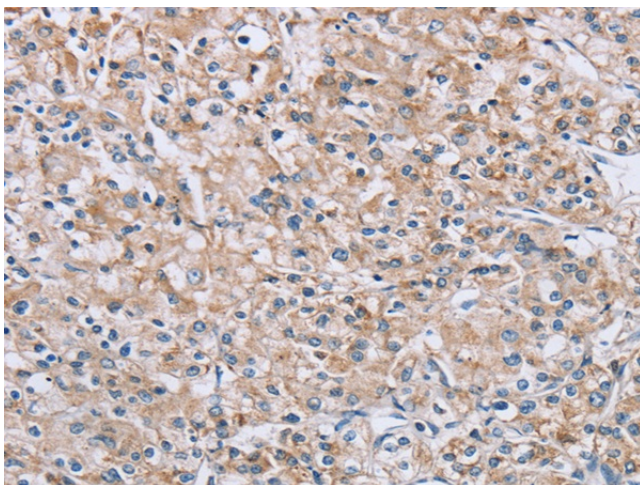
Gel: 8%SDS-PAGE
Lysate: 40 µg
Lane: A172 cell
Primary antibody: TA321326 (CRMP1 Antibody) at dilution 1/200
Secondary antibody: Goat anti rabbit IgG at 1/8000 dilution
Exposure time: 5 seconds



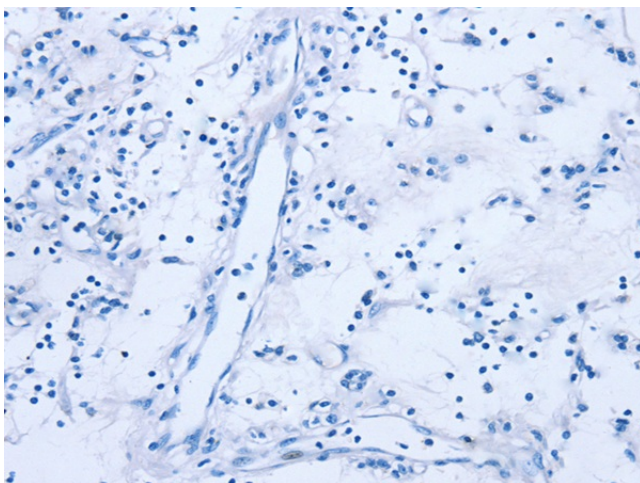
Immunohistochemistry of paraffin-embedded Human brain tissue using TA321326 (CRMP1 Antibody) at dilution 1/35 (Original magnification: ×200)



Immunohistochemistry of paraffin-embedded Human brain tissue using TA321326 (CRMP1 Antibody) at dilution 1/35, treated with synthetic peptide. (Original magnification: $\times 200$)



Immunohistochemistry of paraffin-embedded Human prostate cancer tissue using TA321326 (CRMP1 Antibody) at dilution 1/35 (Original magnification: $\times 200$)



Immunohistochemistry of paraffin-embedded Human prostate cancer tissue using TA321326 (CRMP1 Antibody) at dilution 1/35, treated with synthetic peptide. (Original magnification: $\times 200$)