

Product datasheet for **TA321325**

Claudin 4 (CLDN4) Rabbit Polyclonal Antibody

Product data:

Product Type:	Primary Antibodies
Applications:	IHC, WB
Recommended Dilution:	WB: 1000-3000 WB positive control: HT-29 cells IHC: 25-100 Positive control: Human breast cancer Predicted cell location: Cytoplasm, Cell membrane
Reactivity:	Human, Mouse
Host:	Rabbit
Isotype:	IgG
Clonality:	Polyclonal
Immunogen:	Synthetic peptide corresponding to a region derived from 193-209 amino acids of Human claudin 4
Formulation:	PBS pH7.3, 0.05% NaN ₃ , 50% glycerol
Concentration:	lot specific
Purification:	Antigen affinity purification
Conjugation:	Unconjugated
Storage:	Store at -20°C as received.
Stability:	Stable for 12 months from date of receipt.
Predicted Protein Size:	22 kDa
Gene Name:	claudin 4
Database Link:	NP_001296 Entrez Gene 12740 Mouse Entrez Gene 1364 Human O14493



[View online »](#)

Background:

Claudin 4; also known as CLDN4; is a protein which in humans is encoded by the CLDN4 gene. It belongs to the group of claudins. This gene encodes an integral membrane protein; which belongs to the claudin family. The protein is a component of tight junction strands and may play a role in internal organ development and function during pre- and postnatal life. This gene is deleted in Williams-Beuren syndrome; a neurodevelopmental disorder affecting multiple systems.

Synonyms:

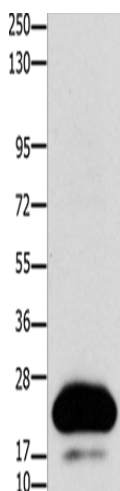
CPE-R; CPER; CPETR; CPETR1; hCPE-R; WBSCR8

Protein Families:

Druggable Genome, Transmembrane

Protein Pathways:

Cell adhesion molecules (CAMs), Leukocyte transendothelial migration, Tight junction

Product images:

Gel: 10+12%SDS-PAGE

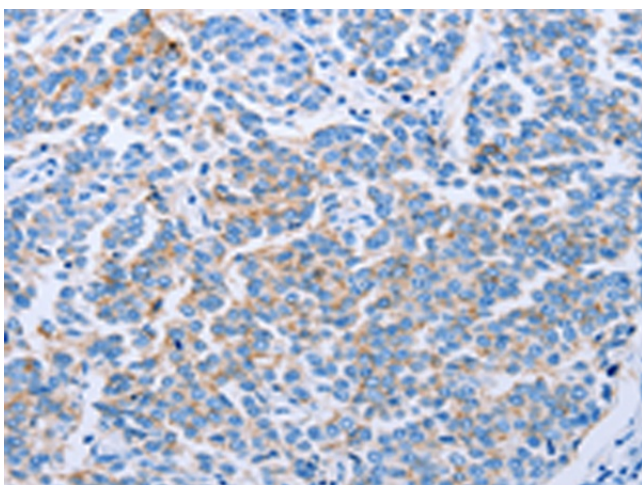
Lysate: 30 µg

Lane: HT29 cells

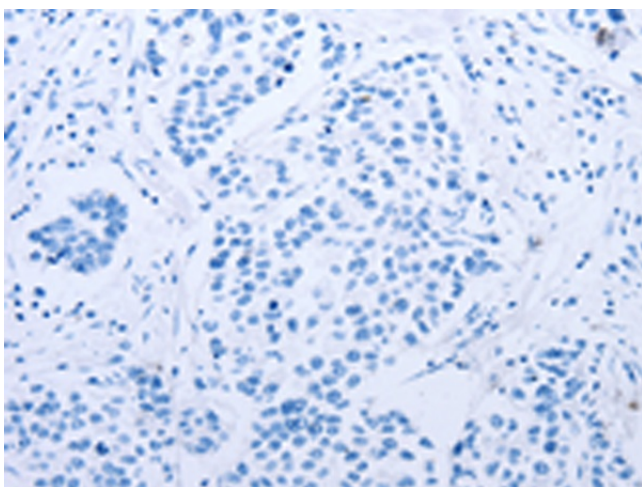
Primary antibody: TA321325 (CLDN4 Antibody) at dilution 1/1100

Secondary antibody: Goat anti rabbit IgG at 1/8000 dilution

Exposure time: 30 seconds



Immunohistochemistry of paraffin-embedded Human breast cancer tissue using TA321325 (CLDN4 Antibody) at dilution 1/50 (Original magnification: ×200)



Immunohistochemistry of paraffin-embedded Human breast cancer tissue using TA321325 (CLDN4 Antibody) at dilution 1/50, treated with synthetic peptide. (Original magnification: ×200)