

## Product datasheet for **TA321318**

### CDC20 Rabbit Polyclonal Antibody

#### Product data:

Product Type:	Primary Antibodies
Applications:	IHC, WB
Recommended Dilution:	WB: 1000-5000 WB positive control: SKOV3 and Hela cell lysates IHC: 200-400 Positive control: Human colorectal cancer Predicted cell location: Cytoplasm
Reactivity:	Human, Mouse, Rat
Host:	Rabbit
Isotype:	IgG
Clonality:	Polyclonal
Immunogen:	Fusion protein corresponding to a region derived from 182-480 amino acids of Human Cell division cycle protein 20 homolog
Formulation:	PBS pH7.3, 0.05% NaN <sub>3</sub> , 50% glycerol
Concentration:	lot specific
Purification:	Antigen affinity purification
Conjugation:	Unconjugated
Storage:	Store at -20°C as received.
Stability:	Stable for 12 months from date of receipt.
Predicted Protein Size:	55 kDa
Gene Name:	cell division cycle 20
Database Link:	<a href="#">NP_001246</a> <a href="#">Entrez Gene 64515 Rat</a> <a href="#">Entrez Gene 107995 Mouse</a> <a href="#">Entrez Gene 991 Human</a> <a href="#">Q12834</a>
Background:	CDC20 appears to act as a regulatory protein interacting with several other proteins at multiple points in the cell cycle. It is required for two microtubule-dependent processes; nuclear movement prior to anaphase and chromosome separation.
Synonyms:	bA276H19.3; CDC20A; p55CDC

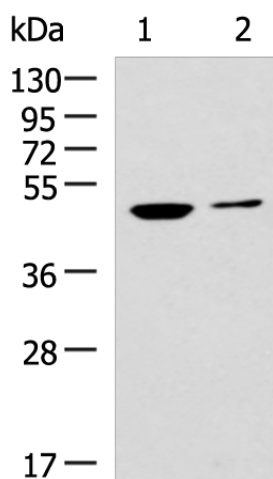


[View online »](#)

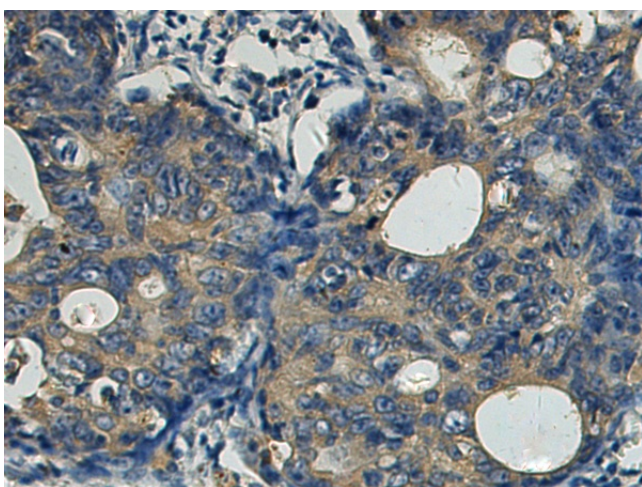
Protein Families: Druggable Genome

Protein Pathways: Cell cycle, Oocyte meiosis, Ubiquitin mediated proteolysis

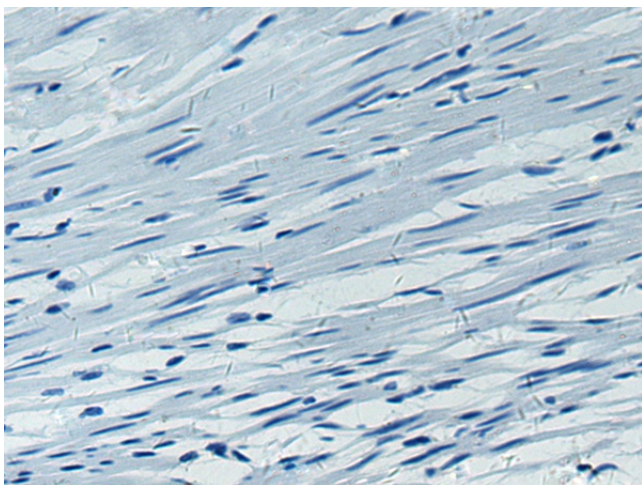
### Product images:



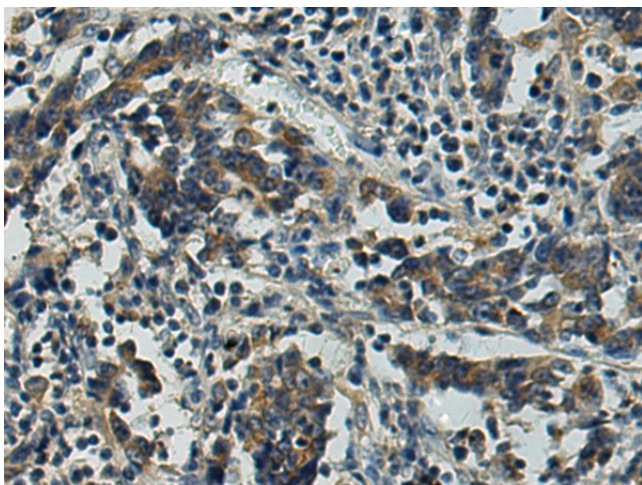
Gel: 8%SDS-PAGE  
Lysate: 40  $\mu$ g  
Lane 1-2: SKOV3 and Hela cell lysates  
Primary antibody: TA321318 (CDC20 Antibody) at dilution 1/1000  
Secondary antibody: Goat anti rabbit IgG at 1/5000 dilution  
Exposure time: 30 seconds



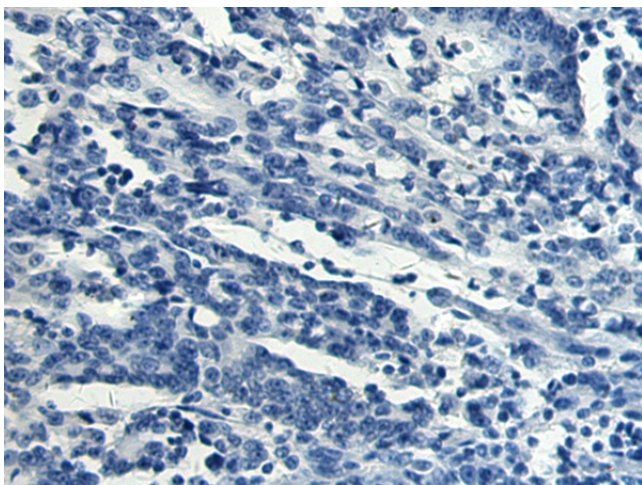
Immunohistochemistry of paraffin-embedded Human colorectal cancer tissue using TA321318 (CDC20 Antibody) at dilution 1/200 (Original magnification:  $\times$ 200)



Immunohistochemistry of paraffin-embedded Human colorectal cancer tissue using TA321318 (CDC20 Antibody) at dilution 1/200, treated with fusion protein. (Original magnification: ×200)



Immunohistochemistry of paraffin-embedded Human gastric cancer tissue using TA321318 (CDC20 Antibody) at dilution 1/200 (Original magnification: ×200)



Immunohistochemistry of paraffin-embedded Human gastric cancer tissue using TA321318 (CDC20 Antibody) at dilution 1/200, treated with fusion protein. (Original magnification: ×200)