

## Product datasheet for **TA321316S**

### CDC6 Rabbit Polyclonal Antibody

#### Product data:

Product Type:	Primary Antibodies
Applications:	IHC, WB
Recommended Dilution:	WB: 200-1000 WB positive control: K562 cells IHC: 25-100 Positive control: Human lung cancer Predicted cell location: Cytoplasm or Nucleus
Reactivity:	Human
Host:	Rabbit
Isotype:	IgG
Clonality:	Polyclonal
Immunogen:	Synthetic peptide corresponding to a region derived from 18-32 amino acids of human cell division cycle 6 homolog ( <i>S. cerevisiae</i> )
Formulation:	PBS pH7.3, 0.05% NaN <sub>3</sub> , 50% glycerol
Purification:	Antigen affinity purification
Conjugation:	Unconjugated
Storage:	Store at -20°C as received.
Stability:	Stable for 12 months from date of receipt.
Predicted Protein Size:	63 kDa
Gene Name:	cell division cycle 6
Database Link:	<a href="#">NP_001245</a> <a href="#">Entrez Gene 990 Human</a> <a href="#">Q99741</a>



[View online »](#)

**Background:**

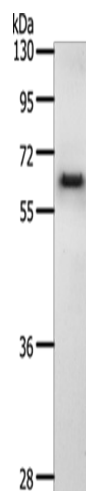
The protein encoded by this gene is highly similar to *Saccharomyces cerevisiae* Cdc6; a protein essential for the initiation of DNA replication. This protein functions as a regulator at the early steps of DNA replication. It localizes in cell nucleus during cell cycle G1; but translocates to the cytoplasm at the start of S phase. The subcellular translocation of this protein during cell cycle is regulated through its phosphorylation by Cdks. Transcription of this protein was reported to be regulated in response to mitogenic signals through transcriptional control mechanism involving E2F proteins.

**Synonyms:**

CDC18L; HsCDC6; HsCDC18

**Protein Pathways:**

Cell cycle

**Product images:**

Gel: 10%SDS-PAGE

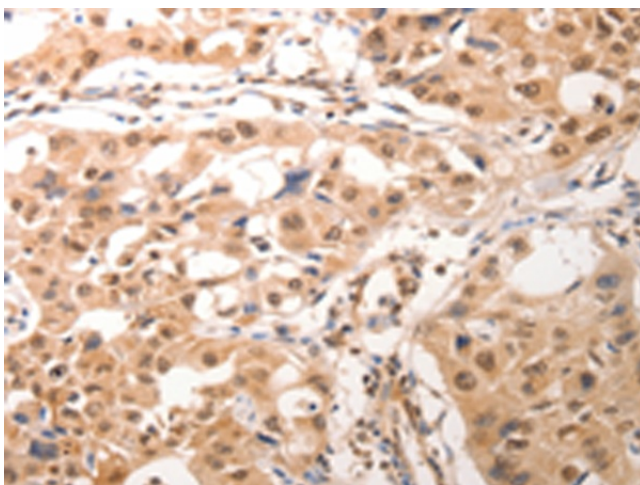
Lysate: 40 µg

Lane: K562 cells

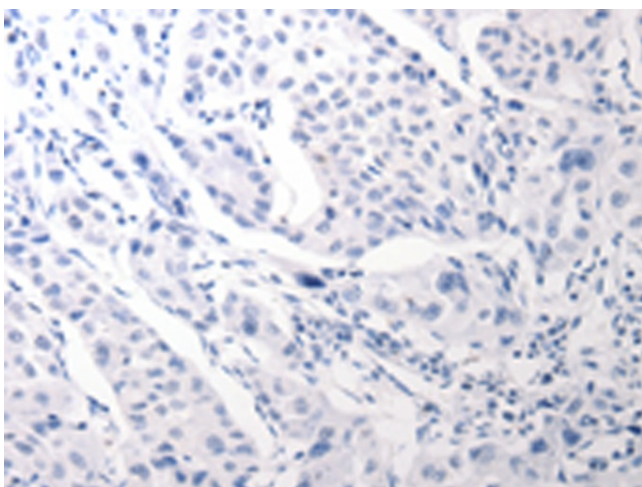
Primary antibody: [TA321316] (CDC6 Antibody) at dilution 1/200

Secondary antibody: Goat anti rabbit IgG at 1/8000 dilution

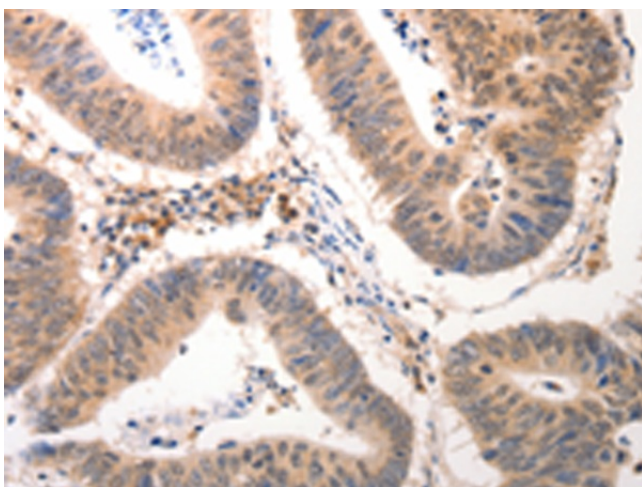
Exposure time: 2 minutes



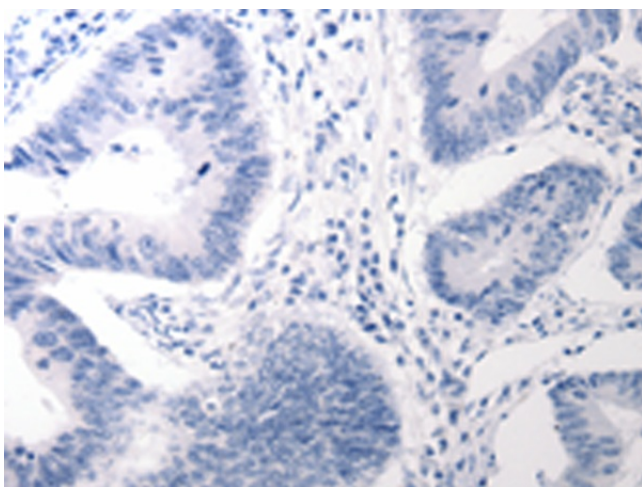
Immunohistochemistry of paraffin-embedded Human lung cancer tissue using [TA321316] (CDC6 Antibody) at dilution 1/25 (Original magnification: ×200)



Immunohistochemistry of paraffin-embedded Human lung cancer tissue using [TA321316] (CDC6 Antibody) at dilution 1/25, treated with synthetic peptide. (Original magnification: x200)



Immunohistochemistry of paraffin-embedded Human colon cancer tissue using [TA321316] (CDC6 Antibody) at dilution 1/25 (Original magnification: x200)



Immunohistochemistry of paraffin-embedded Human colon cancer tissue using [TA321316] (CDC6 Antibody) at dilution 1/25, treated with synthetic peptide. (Original magnification: x200)