

## Product datasheet for **TA321313**

### Cyclin E1 (CCNE1) Rabbit Polyclonal Antibody

#### Product data:

Product Type:	Primary Antibodies
Applications:	IHC
Recommended Dilution:	IHC: 30-150 Positive control: Human ovarian cancer Predicted cell location: Nucleus
Reactivity:	Human
Host:	Rabbit
Isotype:	IgG
Clonality:	Polyclonal
Immunogen:	Synthetic peptide corresponding to a region derived from 398-410 amino acids of Human Cyclin E1
Formulation:	PBS pH7.3, 0.05% NaN <sub>3</sub> , 50% glycerol
Concentration:	lot specific
Purification:	Antigen affinity purification
Conjugation:	Unconjugated
Storage:	Store at -20°C as received.
Stability:	Stable for 12 months from date of receipt.
Gene Name:	cyclin E1
Database Link:	<a href="#">NP_001229</a> <a href="#">Entrez Gene 898 Human</a> <a href="#">P24864</a>



[View online »](#)

**Background:**

The protein encoded by this gene belongs to the highly conserved cyclin family; whose members are characterized by a dramatic periodicity in protein abundance through the cell cycle. Cyclins function as regulators of CDK kinases. Different cyclins exhibit distinct expression and degradation patterns which contribute to the temporal coordination of each mitotic event. This cyclin forms a complex with and functions as a regulatory subunit of CDK2; whose activity is required for cell cycle G1/S transition. This protein accumulates at the G1-S phase boundary and is degraded as cells progress through S phase. Overexpression of this gene has been observed in many tumors; which results in chromosome instability; and thus may contribute to tumorigenesis. This protein was found to associate with; and be involved in; the phosphorylation of NPAT protein (nuclear protein mapped to the ATM locus); which participates in cell-cycle regulated histone gene expression and plays a critical role in promoting cell-cycle progression in the absence of pRB. Two alternatively spliced transcript variants of this gene; which encode distinct isoforms; have been described. Two additional splice variants were reported but detailed nucleotide sequence information is not yet available.

**Synonyms:**

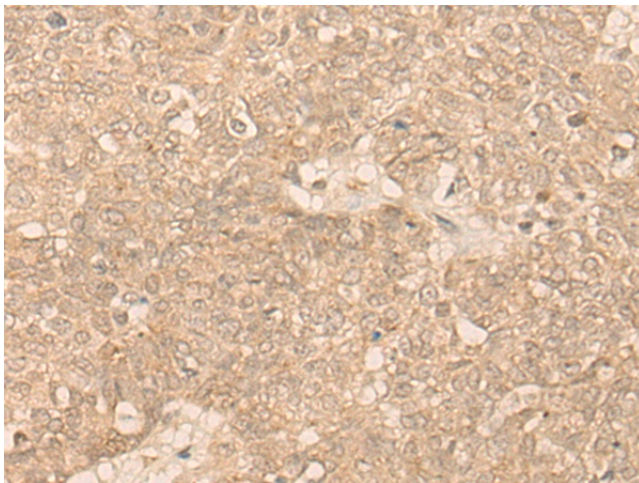
CCNE; pCCNE1

**Protein Families:**

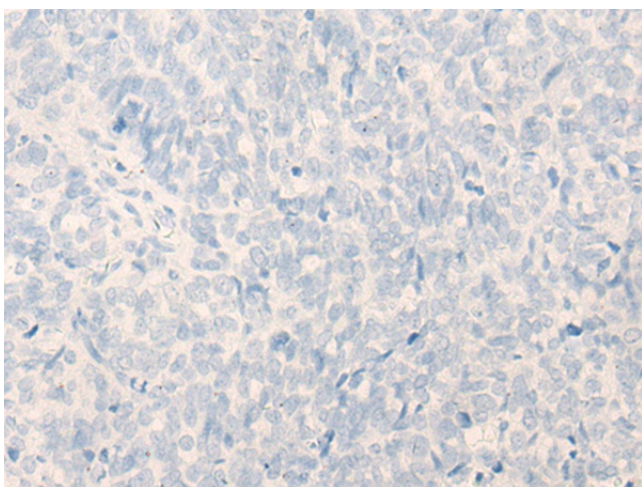
Druggable Genome, Stem cell - Pluripotency, Stem cell relevant signaling - DSL/Notch pathway, Transcription Factors

**Protein Pathways:**

Cell cycle, Oocyte meiosis, p53 signaling pathway, Pathways in cancer, Prostate cancer, Small cell lung cancer

**Product images:**

Immunohistochemistry of paraffin-embedded Human ovarian cancer tissue using TA321313 (CCNE1 Antibody) at dilution 1/20 (Original magnification:  $\times 200$ )



Immunohistochemistry of paraffin-embedded Human ovarian cancer tissue using TA321313 (CCNE1 Antibody) at dilution 1/20, treated with synthetic peptide. (Original magnification: ×200)