

Product datasheet for **TA321303S**

BNIP1 Rabbit Polyclonal Antibody

Product data:

Product Type:	Primary Antibodies
Applications:	IHC, WB
Recommended Dilution:	WB: 200-1000 WB positive control: A431 and A172 cells, human liver cancer tissue IHC: 50-200 Positive control: Human esophagus cancer Predicted cell location: Nucleus
Reactivity:	Human, Mouse, Rat
Host:	Rabbit
Isotype:	IgG
Clonality:	Polyclonal
Immunogen:	Fusion protein corresponding to a region derived from 4-227 amino acids of human BCL2/adenovirus E1B 19kDa interacting protein 1
Formulation:	PBS pH7.3, 0.05% NaN ₃ , 50% glycerol
Purification:	Antigen affinity purification
Conjugation:	Unconjugated
Storage:	Store at -20°C as received.
Stability:	Stable for 12 months from date of receipt.
Predicted Protein Size:	26 kDa
Gene Name:	BCL2/adenovirus E1B 19kDa interacting protein 1
Database Link:	NP_001196 Entrez Gene 140932 RatEntrez Gene 224630 MouseEntrez Gene 662 Human Q12981



[View online »](#)

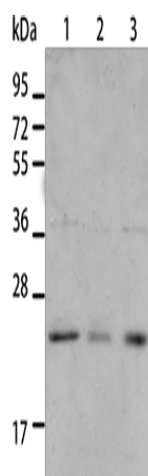
Background: This gene is a member of the BCL2/adenovirus E1B 19 kd-interacting protein (BNIP) family. It interacts with the E1B 19 kDa protein, which protects cells from virally-induced cell death. The encoded protein also interacts with E1B 19 kDa-like sequences of BCL2, another apoptotic protector. In addition, this protein is involved in vesicle transport into the endoplasmic reticulum. Alternative splicing of this gene results in four protein products with identical N- and C-termini.?

Synonyms: NIP1; SEC20; TRG-8

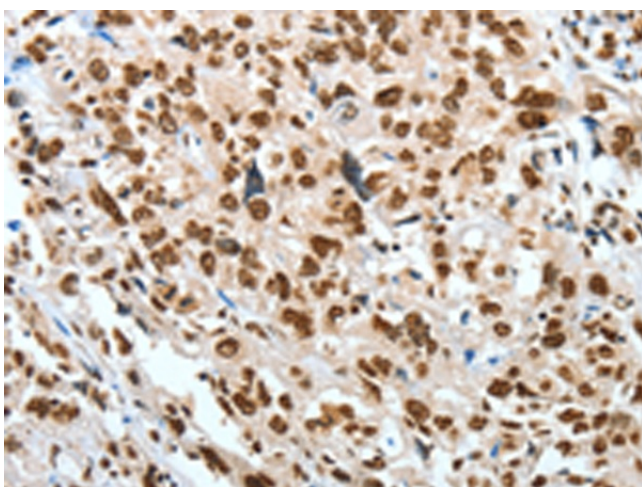
Protein Families: Druggable Genome, Transmembrane

Protein Pathways: SNARE interactions in vesicular transport

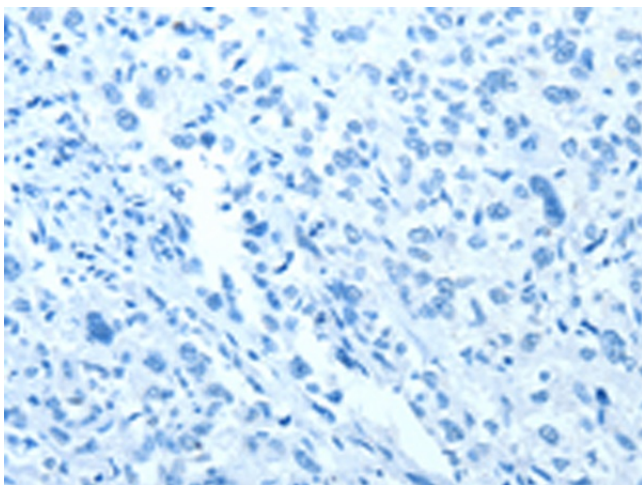
Product images:



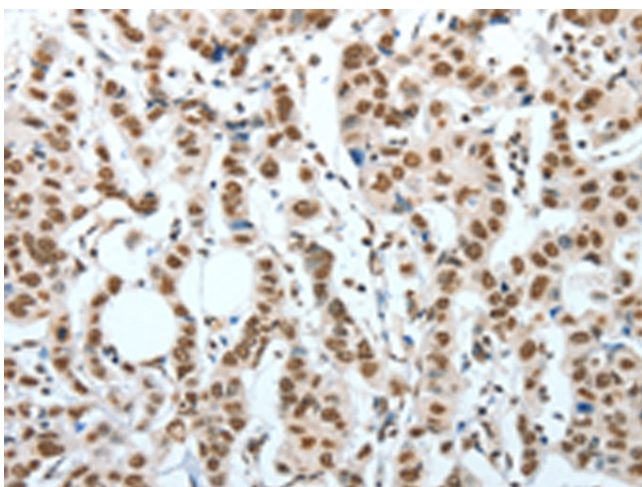
Gel: 12%SDS-PAGE
Lysate: 40 µg
Lane 1-3: A431 cells
A172 cells
human liver cancer tissue
Primary antibody: [TA321303] (BNIP1 Antibody) at dilution 1/550
Secondary antibody: Goat anti rabbit IgG at 1/8000 dilution
Exposure time: 10 seconds



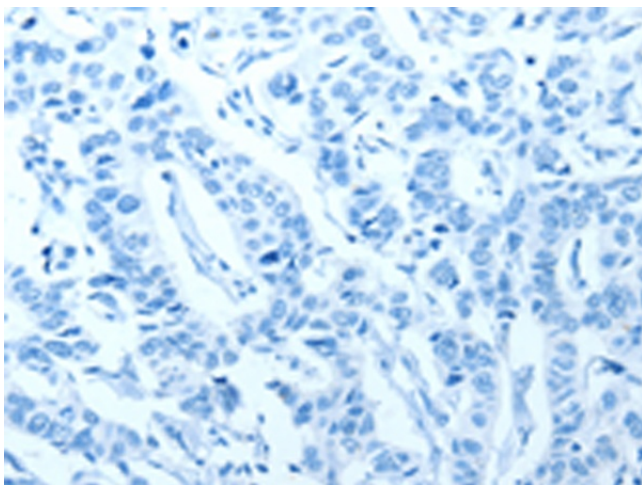
Immunohistochemistry of paraffin-embedded Human esophagus cancer tissue using [TA321303] (BNIP1 Antibody) at dilution 1/60 (Original magnification: ×200)



Immunohistochemistry of paraffin-embedded Human esophagus cancer tissue using [TA321303] (BNIP1 Antibody) at dilution 1/60, treated with fusion protein. (Original magnification: $\times 200$)



Immunohistochemistry of paraffin-embedded Human breast cancer tissue using [TA321303] (BNIP1 Antibody) at dilution 1/60 (Original magnification: $\times 200$)



Immunohistochemistry of paraffin-embedded Human breast cancer tissue using [TA321303] (BNIP1 Antibody) at dilution 1/60, treated with fusion protein. (Original magnification: $\times 200$)