

## Product datasheet for **TA321302S**

### **BMP3 Rabbit Polyclonal Antibody**

#### **Product data:**

Product Type:	Primary Antibodies
Applications:	IHC, WB
Recommended Dilution:	WB: 200-1000 WB positive control: Human hepatocellular carcinoma tissue IHC: 25-100 Positive control: Human liver cancer Predicted cell location: Cytoplasm
Reactivity:	Human
Host:	Rabbit
Isotype:	IgG
Clonality:	Polyclonal
Immunogen:	Synthetic peptide corresponding to a region derived from 23-42 amino acids of Human Bone morphogenetic protein 3
Formulation:	PBS pH7.3, 0.05% NaN <sub>3</sub> , 50% glycerol
Purification:	Antigen affinity purification
Conjugation:	Unconjugated
Storage:	Store at -20°C as received.
Stability:	Stable for 12 months from date of receipt.
Predicted Protein Size:	54 kDa
Gene Name:	bone morphogenetic protein 3
Database Link:	<a href="#">NP_001192</a> <a href="#">Entrez Gene 651 Human</a> <a href="#">P12645</a>



[View online »](#)

**Background:**

The protein encoded by this gene is a member of the transforming growth factor beta superfamily. Bone morphogenetic protein; also known as osteogenin; induces bone formation. It like other bone morphogenetic proteins (BMP's) is known for its ability to induce bone and cartilage development. It is a disulfide-linked homodimer. It negatively regulates bone density. BMP3 is an antagonist to other BMP's in the differentiation of osteogenic progenitors. It is highly expressed in fractured tissues.

**Synonyms:**

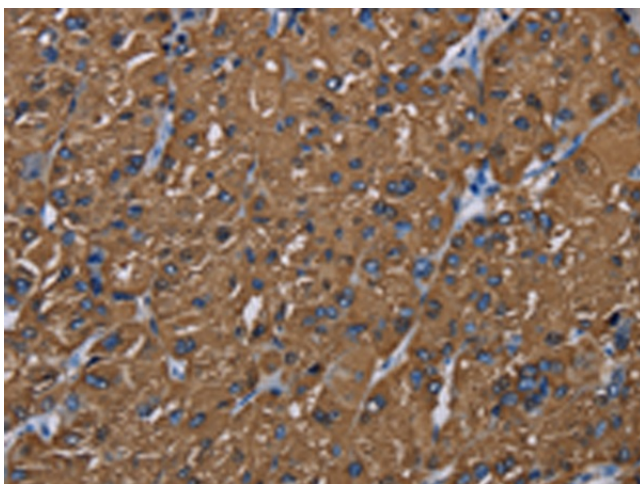
BMP-3A

**Protein Families:**

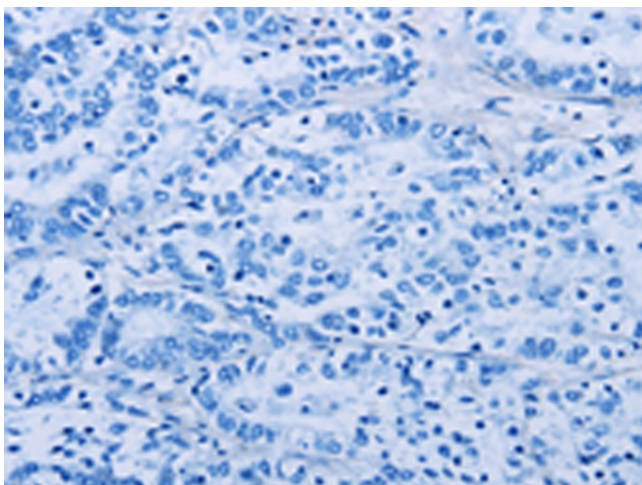
Druggable Genome, Secreted Protein

**Product images:**

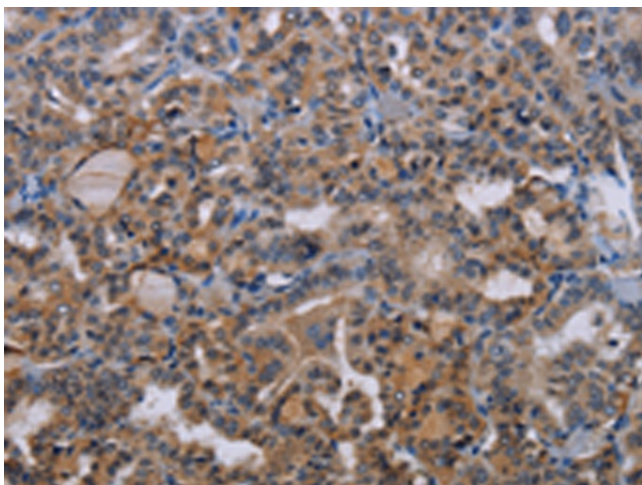

Gel: 8%SDS-PAGE  
 Lysate: 40 µg  
 Lane: Human hepatocellular carcinoma tissue  
 Primary antibody: [TA321302] (BMP3 Antibody) at dilution 1/200  
 Secondary antibody: Goat anti rabbit IgG at 1/8000 dilution  
 Exposure time: 20 seconds



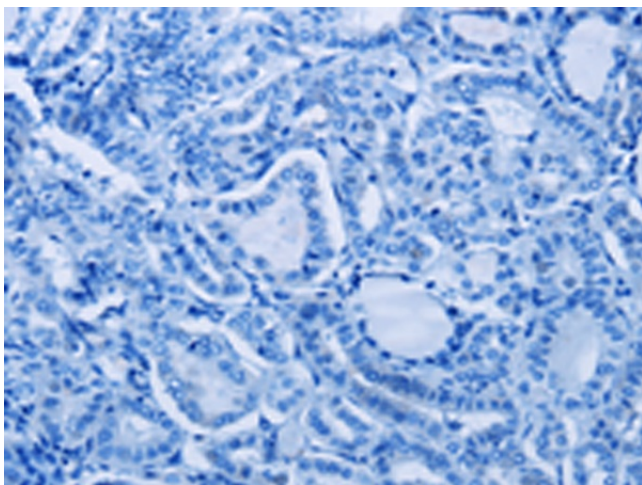
Immunohistochemistry of paraffin-embedded Human liver cancer tissue using [TA321302] (BMP3 Antibody) at dilution 1/20 (Original magnification: ×200)



Immunohistochemistry of paraffin-embedded Human liver cancer tissue using [TA321302] (BMP3 Antibody) at dilution 1/20, treated with synthetic peptide. (Original magnification: ×200)



Immunohistochemistry of paraffin-embedded Human thyroid cancer tissue using [TA321302] (BMP3 Antibody) at dilution 1/20 (Original magnification: ×200)



Immunohistochemistry of paraffin-embedded Human thyroid cancer tissue using [TA321302] (BMP3 Antibody) at dilution 1/20, treated with synthetic peptide. (Original magnification: ×200)