

Product datasheet for **TA321301S**

BMP3 Rabbit Polyclonal Antibody

Product data:

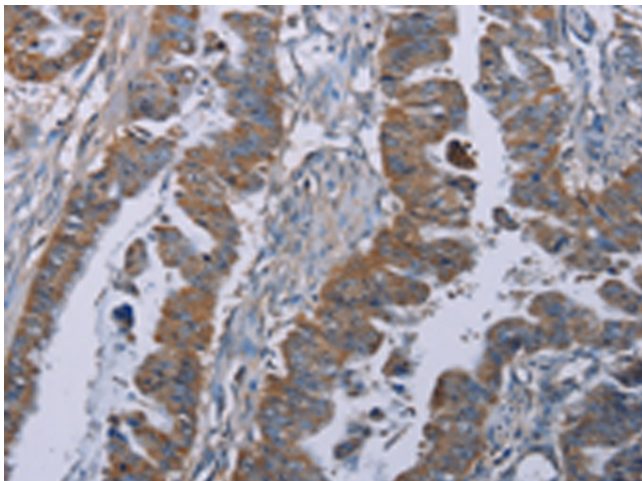
Product Type:	Primary Antibodies
Applications:	IHC
Recommended Dilution:	IHC: 25-100 Positive control: Human esophagus cancer Predicted cell location: Cytoplasm
Reactivity:	Human
Host:	Rabbit
Isotype:	IgG
Clonality:	Polyclonal
Immunogen:	Synthetic peptide corresponding to a region derived from 23-42 amino acids of Human Bone morphogenetic protein 3
Formulation:	PBS pH7.3, 0.05% NaN ₃ , 50% glycerol
Purification:	Antigen affinity purification
Conjugation:	Unconjugated
Storage:	Store at -20°C as received.
Stability:	Stable for 12 months from date of receipt.
Predicted Protein Size:	54 kDa
Gene Name:	bone morphogenetic protein 3
Database Link:	NP_001192 Entrez Gene 651 Human P12645
Background:	The protein encoded by this gene is a member of the transforming growth factor beta superfamily. Bone morphogenetic protein; also known as osteogenin; induces bone formation. It like other bone morphogenetic proteins (BMP's) is known for its ability to induce bone and cartilage development. It is a disulfide-linked homodimer. It negatively regulates bone density. BMP3 is an antagonist to other BMP's in the differentiation of osteogenic progenitors. It is highly expressed in fractured tissues.
Synonyms:	BMP-3A



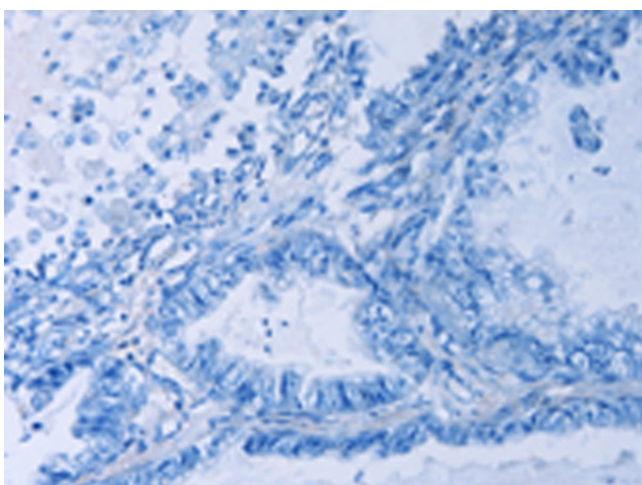
[View online »](#)

Protein Families: Druggable Genome, Secreted Protein

Product images:



Immunohistochemistry of paraffin-embedded Human esophagus cancer tissue using [TA321301] (BMP3 Antibody) at dilution 1/30 (Original magnification: $\times 200$)



Immunohistochemistry of paraffin-embedded Human esophagus cancer tissue using [TA321301] (BMP3 Antibody) at dilution 1/30, treated with synthetic peptide. (Original magnification: $\times 200$)